

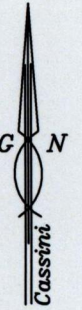
R.P.O. Vol. 15 Fol. 387
C.T. Vol. 1528 Fol. 121

Ward of Savana Grande
County of Victoria
Cadastral Sheet G.10.J 64B
4/a

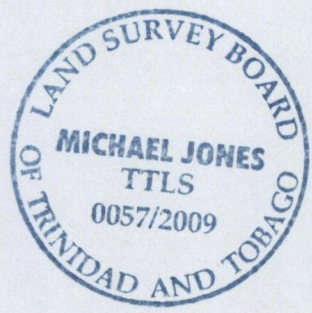
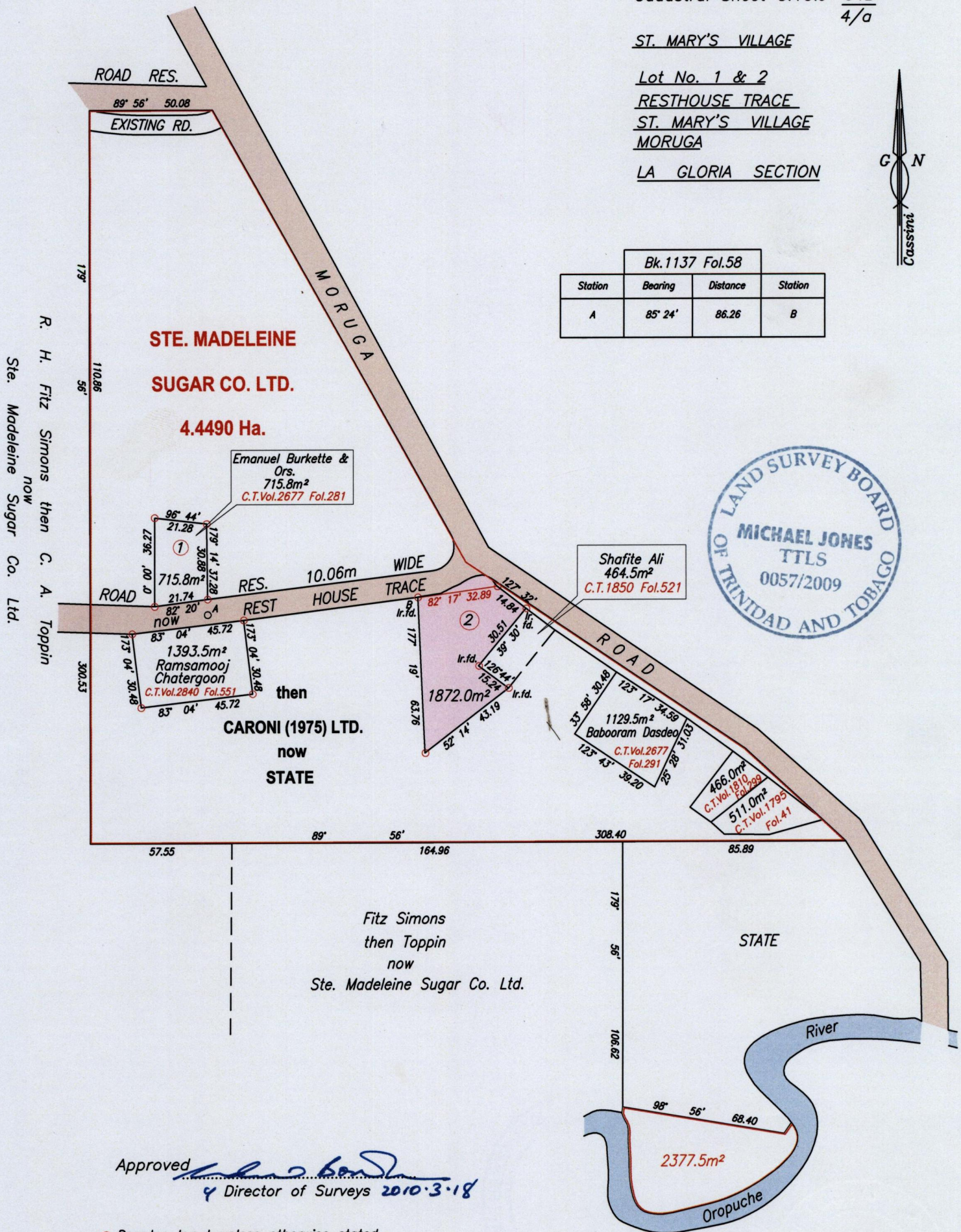
ST. MARY'S VILLAGE

Lot No. 1 & 2
RESTHOUSE TRACE
ST. MARY'S VILLAGE
MORUGA

LA GLORIA SECTION



Bk.1137 Fol.58			
Station	Bearing	Distance	Station
A	85° 24'	86.26	B



Approved *[Signature]*
Director of Surveys 2010.3.18

o Denotes Ir.put unless otherwise stated
Note: to obtain compass bearings add 4 minutes
Bearings are Cassini Grid, based on Solar Observations

PLAN of a Parcel of land coloured pink in the Ward of Savana Grande
Containing one thousand eight hundred and seventy two point zero square metres
Prepared by me, with due authority from surveys done by Mr. Davis H.Petit in June 1970
In accordance with Regulation (25) of the Land Surveyors' Regulations 1998,
I certify that this plan is correct.

Checked by *[Signature]*

[Signature]

Entered by