

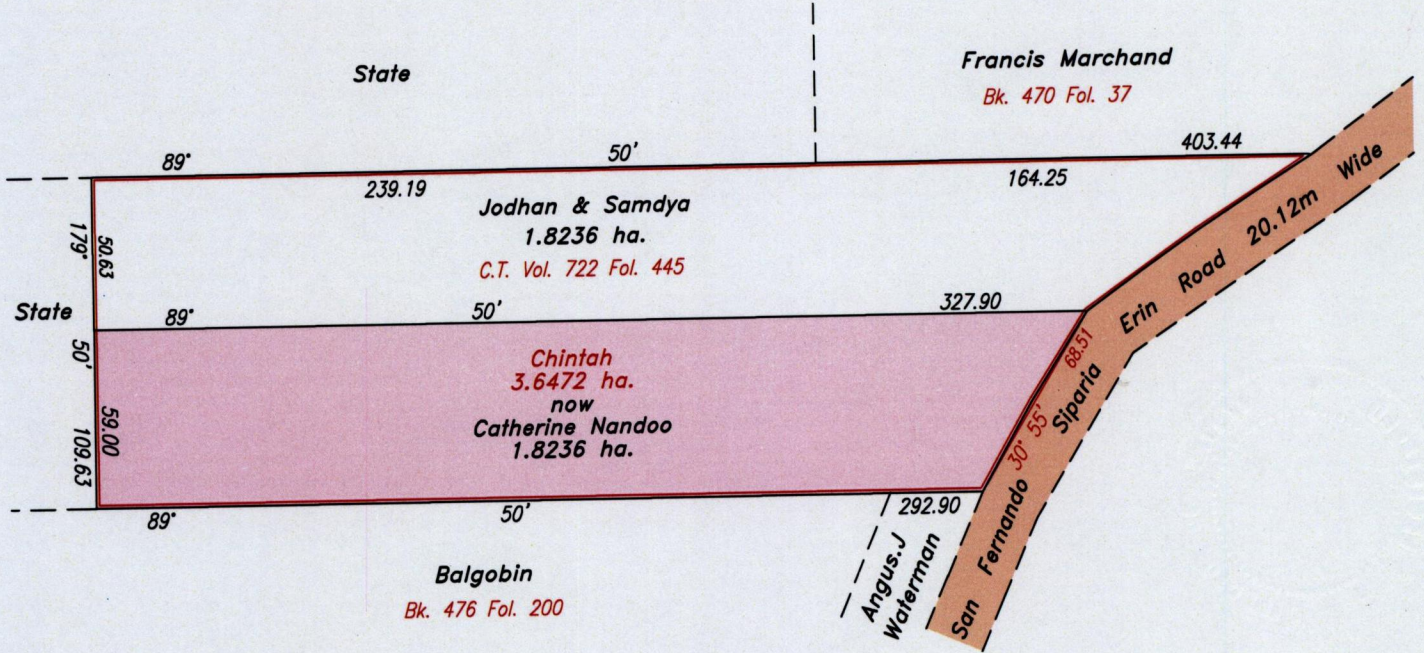
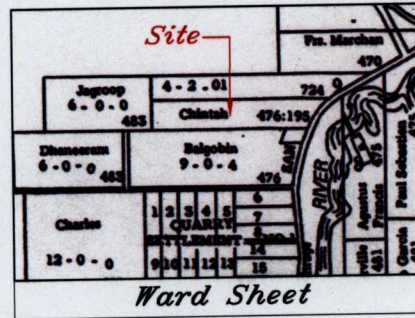
1333

13(1)

REMAINING PORTION

R.P.O Vol. 148 Fol. 609
C.T. Vol. 722 Fol. 439

Ward of Siparia
County of St. Patrick
Cadastral Sheet (G.17.A.), $\frac{73A}{1/d \& 2/c}$
Parcel Address: S.S. Erin Road
Quarry Village

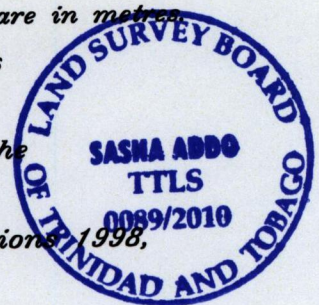


Ref. Bk. 724 Fol. 177
Bk. 476 Fol. 195
Bk. 1135 Fol. 616
Bk. 1135 Fol. 290

Approved: *[Signature]*
Director of Surveys 2010.3.18

SCALE 1:2500

Note: Bearings are U.T.M. grid based on solar observations. Distances are in metres.
This is a true copy of a diagram of three point six four seven two hectares originally transferred to Chintah showing a portion coloured pink and containing one point eight two three six hectares being the remainder after one (1) previous transfer of a portion of the land.
In accordance with Regulation 25(1) of the Land Surveyors' Regulations 1998, I certify that this plan is correct.



Checked by: *[Signature]* 5/2/10
Entered

[Signature]
Trinidad & Tobago Land Surveyor 1 Feb. 2010.