

R.P.O. Vol. 175 Fol. 29

Ward of Siparia

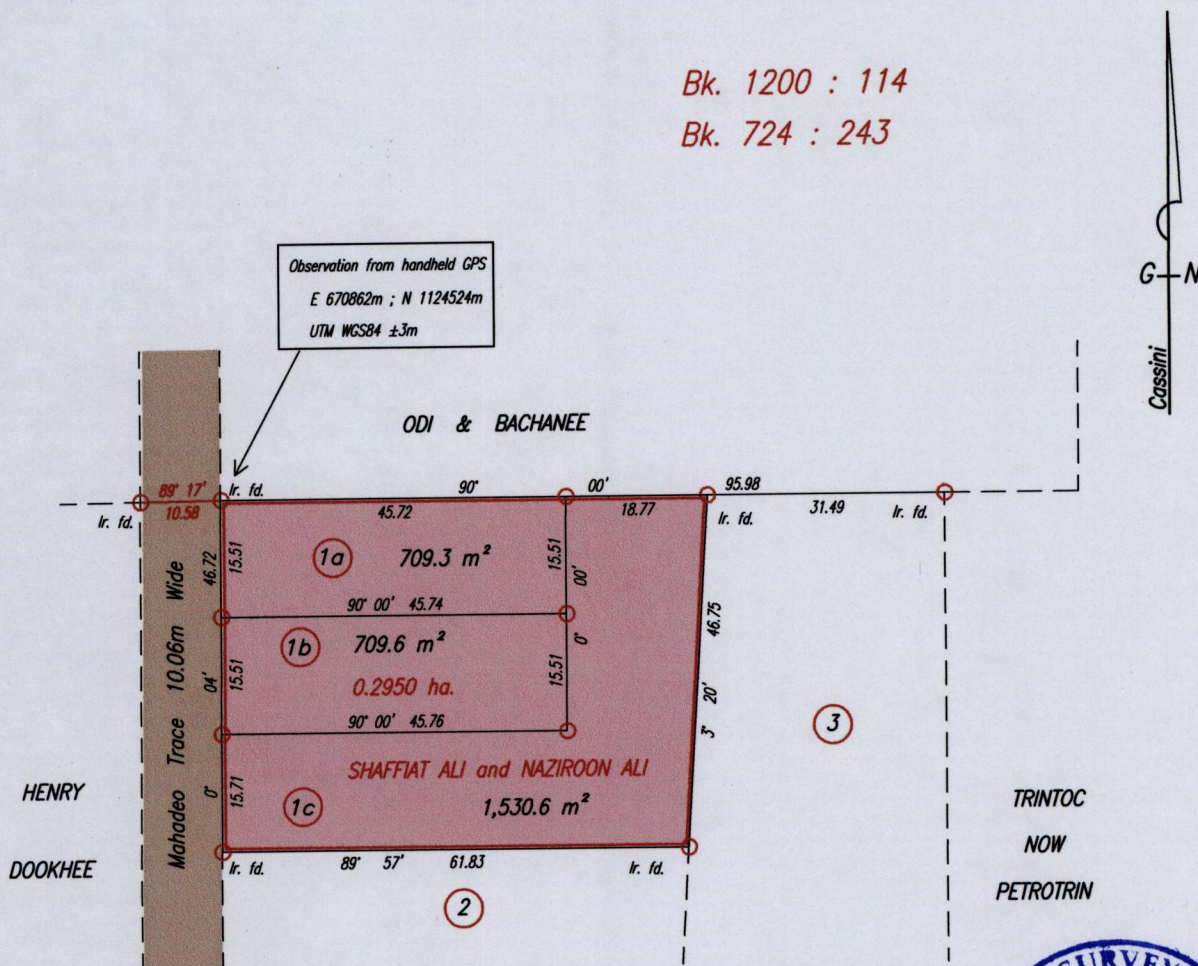
C.T. Vol. 3532 Fol. 111

County of St. Patrick

Cadastral Sheet G.13.K. 63F  
3/b

Bk. 1200 : 114

Bk. 724 : 243



Approved : *[Signature]*  
Director of Surveys 2010.3.17

SCALE 1:1000

o denotes iron put except otherwise stated.

Bearings are Cassini Grid based on solar observations.

Distances are in Metres

Plan of three Parcels of land coloured pink in the Ward of Siparia  
Containing together zero point two nine five zero hectares.  
Surveyed by me, with due authority, in February 2008.

In accordance with Regulation 25(1) of the Land Surveyors' Regulations 1998,  
I certify that this plan is correct.

Checked by *[Signature]* 18/2/10

*[Signature]*

Entered . . . . .

Trinidad & Tobago Land Surveyor *[Signature]* 8th October .2009