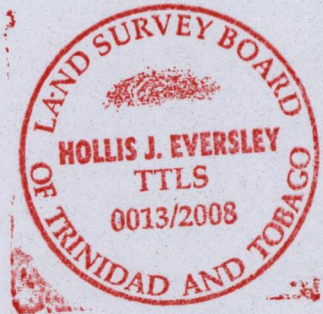
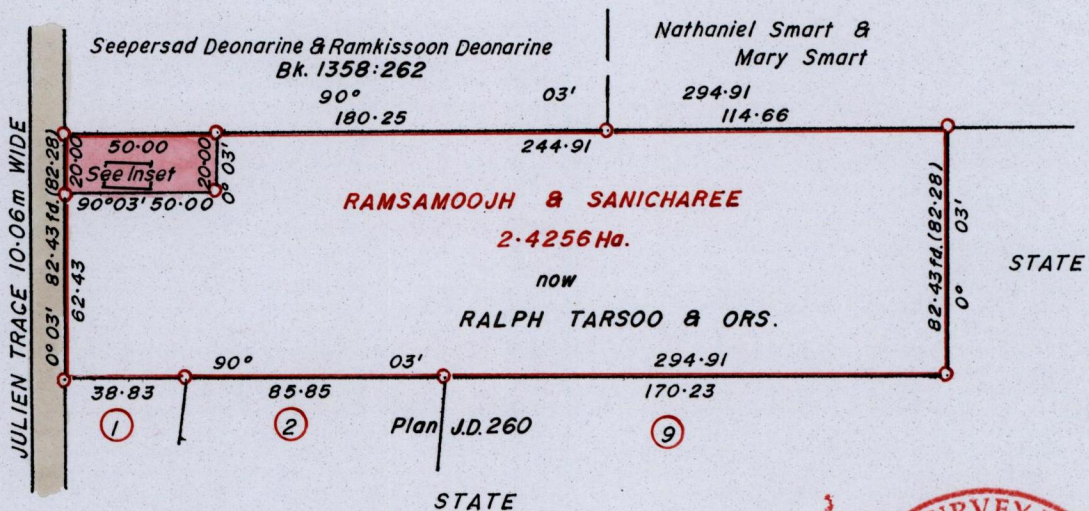
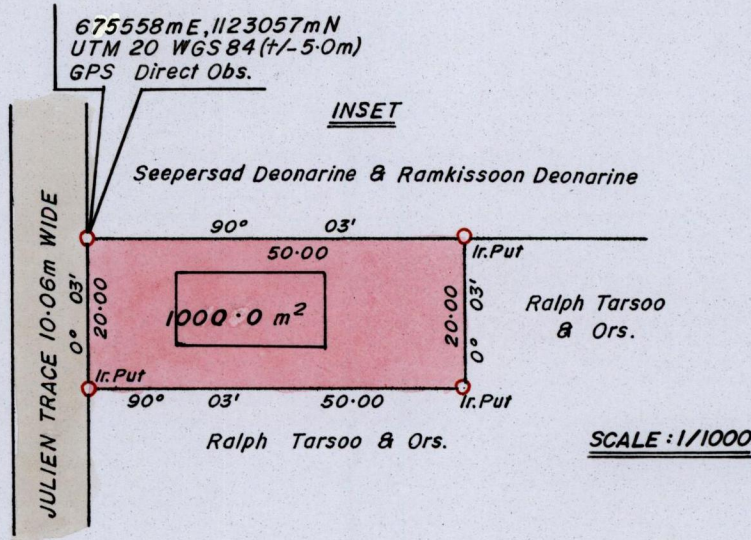
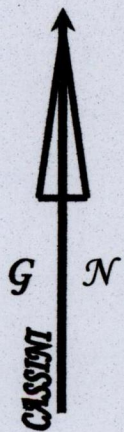


R.P.O Vol. 592 Fol. 201  
C.T. Vol. Fol.

Ward of Siparia.  
County of St. Patrick.  
Cadastral Sheet G.14.M. 64D

3/c



Bk. 568 : 121  
SCALE 1 : 2500, 1 : 1000.

Distances are in METRES

o Denotes Iron fd. except otherwise stated

Bearings are Cassini Grid based on Solar Observations.

Approved.....

*[Signature]*  
Director of Surveys.  
2009.10.13

**PLAN of a Parcel of land coloured in PINK in the Ward of Siparia.**

**Containing one thousand square metres.**

**Surveyed by me, with due authority, in March 2008.**

**In accordance with Reg. 25(1) of the Land Surveyors' Regulations 1998,**

**I certify that this plan is correct.**

Checked by *mm* 12/10/09

*[Signature]*  
2008

Entered ..... Trinidad and Tobago Land Surveyor ..... 2008.