

R.P.O Vol. Fol.  
C.T. Vol. 1683 Fol. 21

Ward of Tacarigua  
County of St. George  
Cadastral Sheet (B.18.0.), 24A  
2/b

Coordinates

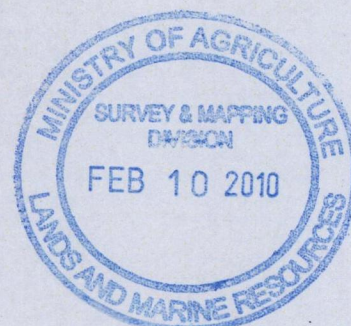
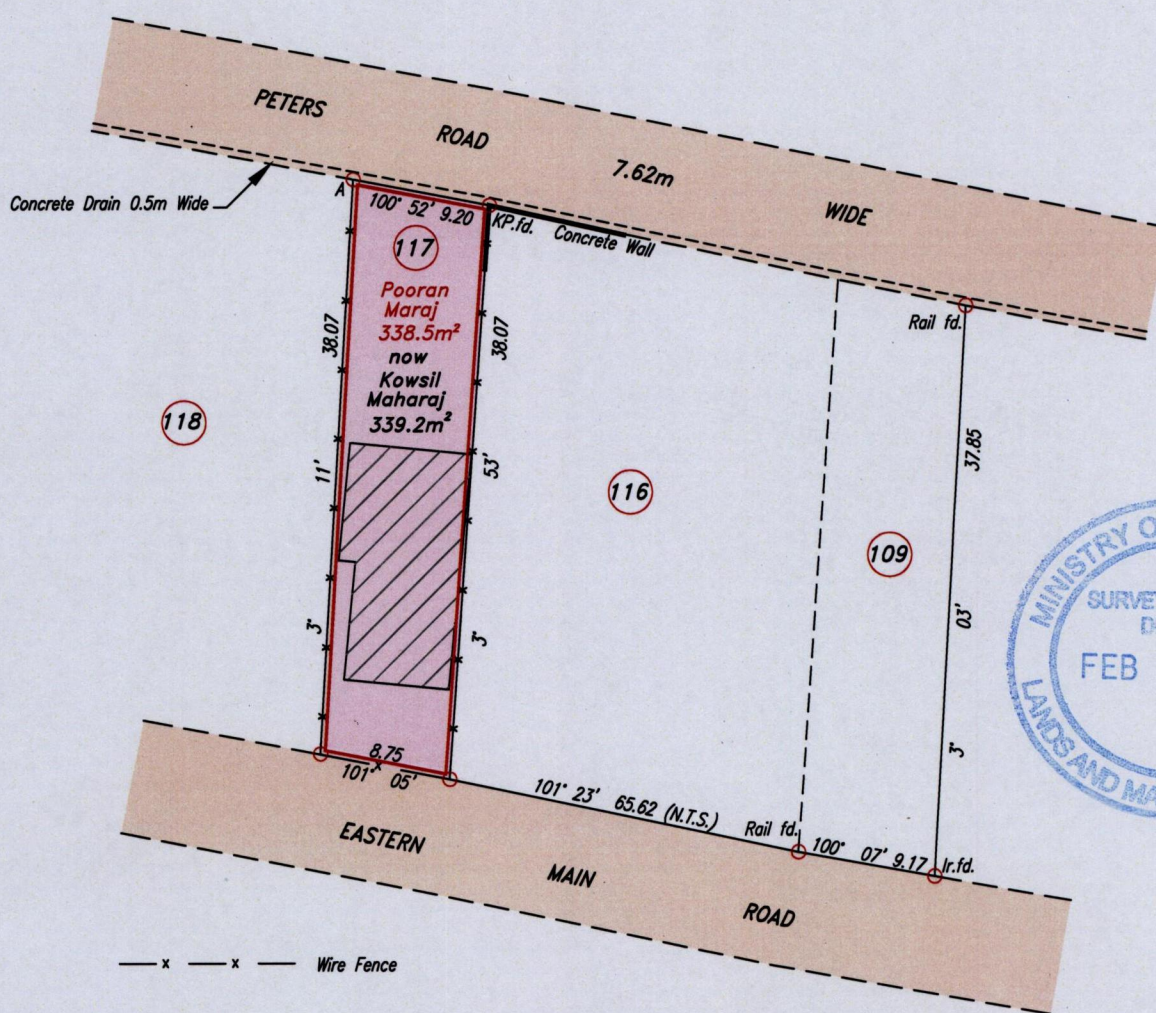
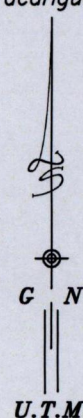
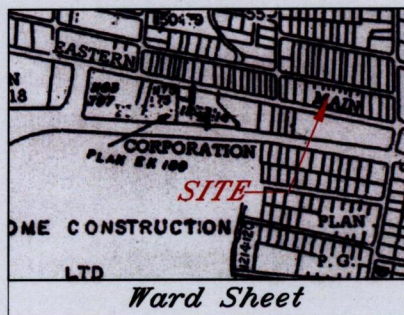
Ir.Pt. A : N 1177061  
E 679221

Parcel Address: Eastern Main Road, Tacarigua

Error Statement : ±4m

Datum Definition : U.T.M. Zone 20 Naparima

Source : Magellan Hand Held GPS



Approved.....  
Director of Surveys 2010.3.17

Ref.: Vol. 1649 Fol.453A  
Plan P.C.77  
SCALE 1:500

○ Denotes Iron put except otherwise stated.

Note: Bearings are U.T.M. grid based on solar observations.

Distances are in metres.

Plan of a Parcel of land coloured pink in the Ward of Tacarigua

Containing three hundred and thirty nine point two square metres

Redefined by me, with due authority, in January 2010

In accordance with Regulation 25(1) of the Land Surveyors' Regulations 1998,

I certify that this plan is correct.

Checked by... MM. 3/3/10

Entered .....

Trinidad & Tobago Land Surveyor 10 Feb 2010.

