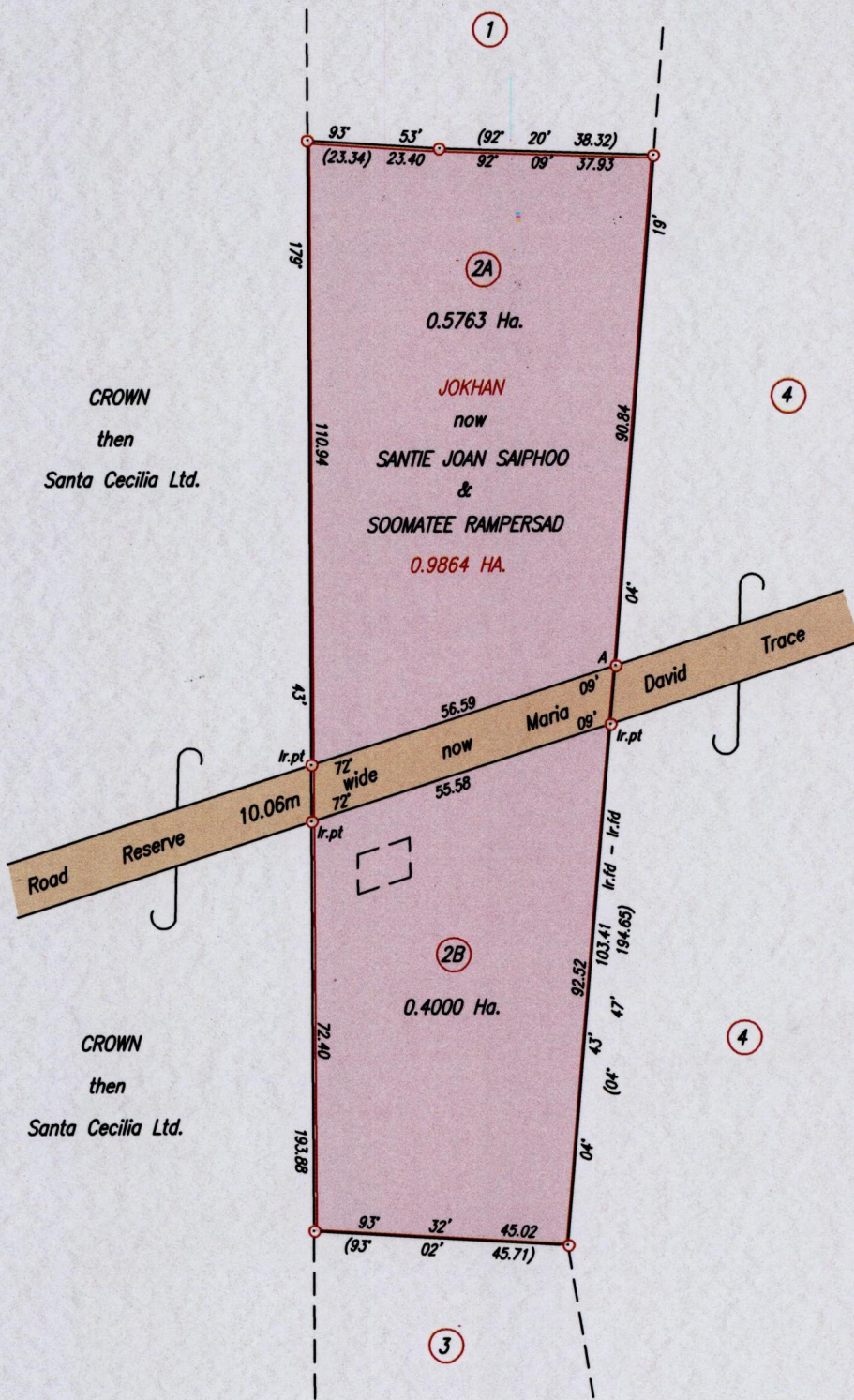


R.P.O. Vol. 140
C.T. Vol. 1811

Fol. 285
Fol. 445

Cadastral Sheet G.12.G. ^{63E} 1/c
Ward of Siparia
County of St. Patrick
Bk. 952 Fol. 88



CROWN
then
Santa Cecilia Ltd.

CROWN
then
Santa Cecilia Ltd.

Approved

Director of Surveys 2010.3.17

SCALE 1/1250

Distances are in metres

Point A

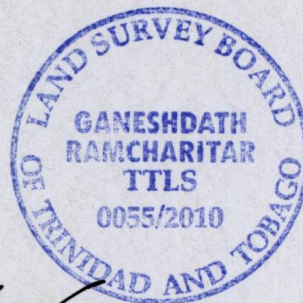
Co-ordinates obtained by Hand Held G.P.S. (WGS84 U.T.M. Zone 20)

Accuracy ± 5m

E 664207m

N 1125414m

○ Denotes Iron found except otherwise stated
 Bearings are Cassini Grid based on Solar Observations
 Plan of 2 Parcels of land coloured pink in the Ward of Siparia
 Containing together zero point nine seven six three hectare
 Surveyed by me, with due authority, on February 15th 2007
 In accordance with Regulation 25 (1) of the Land Surveyors' Regulations 1998,
 I certify that this plan is correct.



Entered on

Checked by *Mohamed P. / 10* Trinidad & Tobago Land Surveyor *5/12* 2010