

1333/100

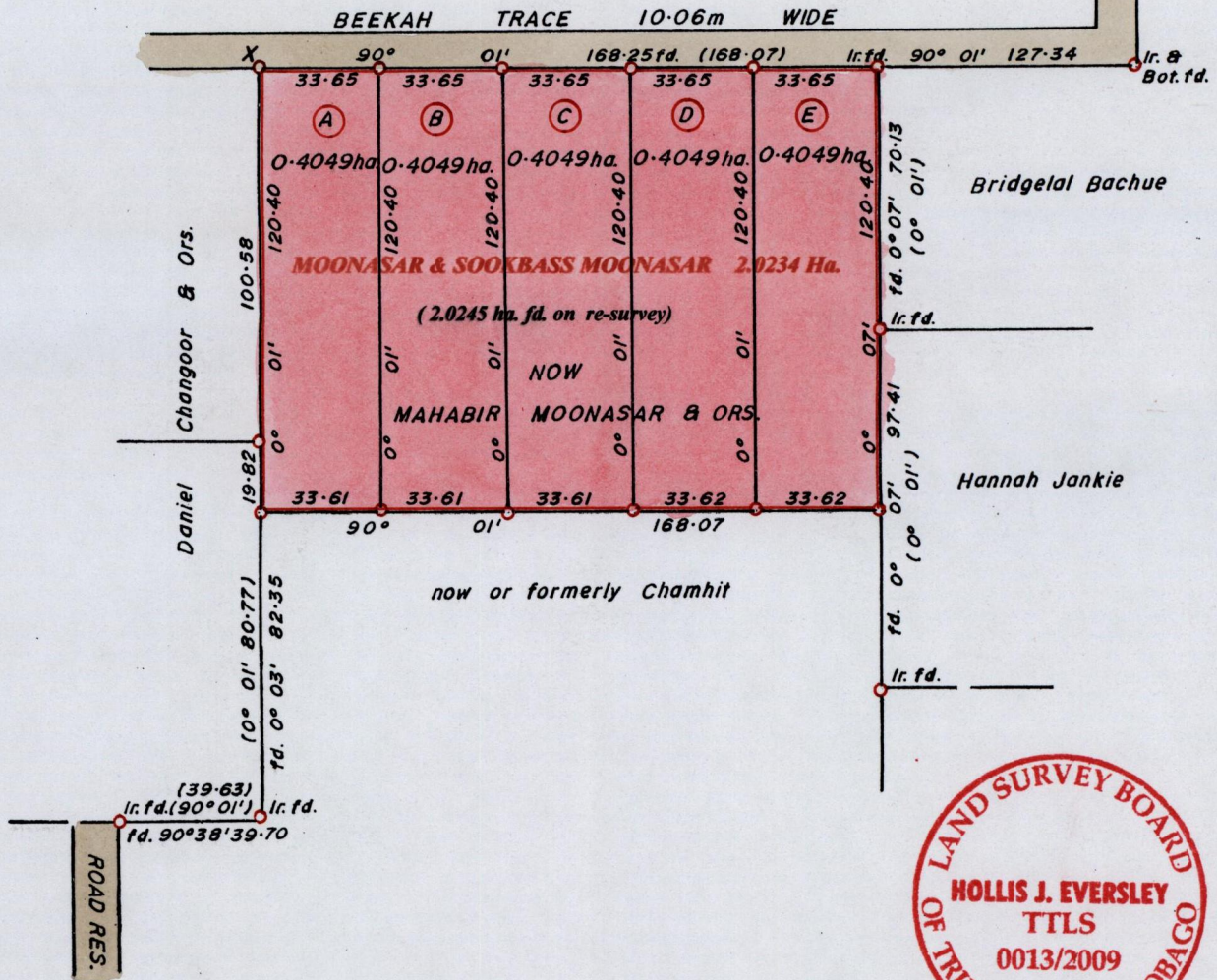
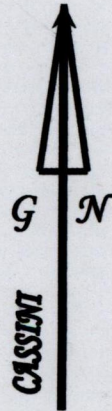
1000

R.P.O Vol. 224 Fol. 369  
C.T. Vol. 2554 Fol. 55

Ward of Siparia.  
County of St. Patrick.  
Cadastral Sheet G.18.H. 73C  
4/a

1118867mN, 672362mE.

X - U.T.M. 20, WGS 84, (+/- 5.0 m)  
G.P.S. Handheld Direct Obs.



Approved Director of Surveys. 2010.3.15

SCALE 1 : 2000.

Distances are in METRES

o Denotes Iron Put except otherwise stated  
Bearings are Cassini Grid based on Solar Observations.

**PLAN of 5 Parcels of land coloured in PINK in the Ward of Siparia.**  
**Containing together two point zero two four five hectares.**  
**Surveyed by me, with due authority, in July 2009.**  
**In accordance with Reg. 25(1) of the Land Surveyors' Regulations 1998,**  
**I certify that this plan is correct.**

Checked by 26/7/10

Entered ..... Trinidad and Tobago Land Surveyor ..... 2009.