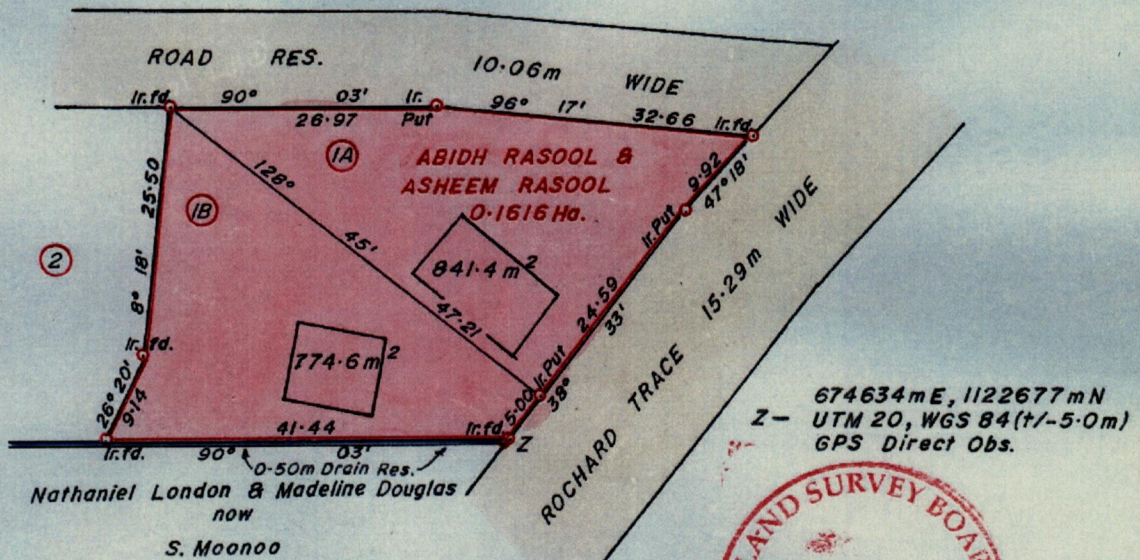
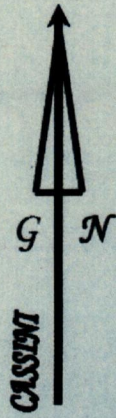


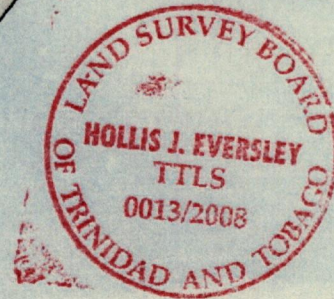
R.P.O Vol. 593 Fol. 249  
C.T. Vol. 4728 Fol. 203  
Vol. 5105 Fol. 41

Ward of Siparia.  
County of St. Patrick.  
Cadastral Sheet G.14.M. 64D

3/c



674634 mE, 1122677 mN  
Z - UTM 20, WGS 84 (+/-5.0m)  
GPS Direct Obs.



Orig. Bk. 1211:199  
BK. 1328:149

Approved.....  
Director of Surveys.  
2008-10-02

Bk. 1271 : 129  
SCALE 1 : 750.  
Distances are in METRES

o Denotes Iron Put except otherwise stated  
Bearings are Cassini Grid based on Solar Observations.

**PLAN of 2 Parcels of land coloured in PINK in the Ward of Siparia.  
Containing together zero point one six one six hectares.  
Surveyed by me, with due authority, in March 2008.  
In accordance with Reg. 25(1) of the Land Surveyors' Regulations 1998,  
I certify that this plan is correct.**

Checked by.....  
29/9/08

Entered ..... Trinidad and Tobago Land Surveyor ..... 2008.

*[Handwritten signature]*  
25/9/08

