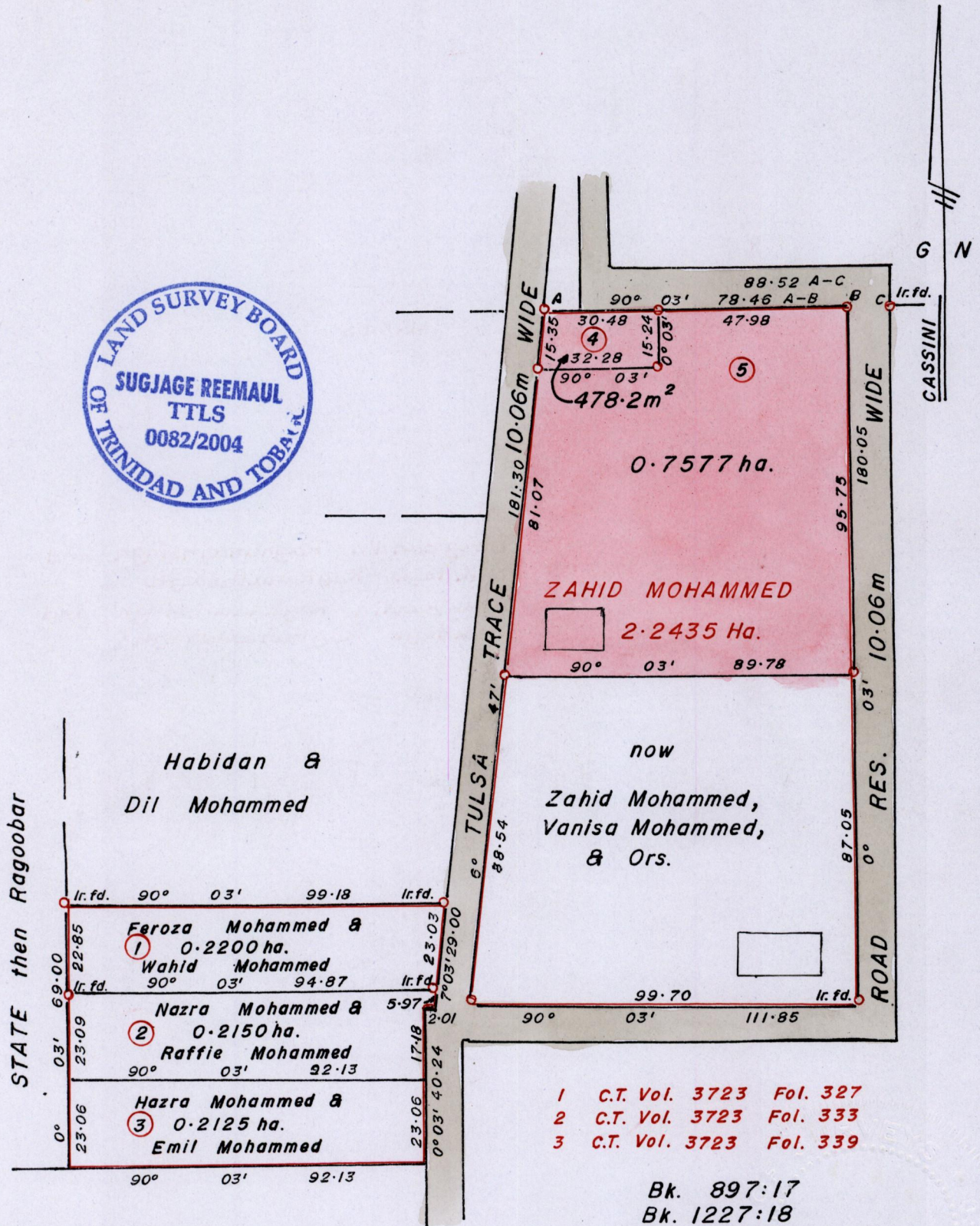


R.P.O. Vol. 143 Fol. 21
C.T. Vol. 3723 Fol. 319
Vol. 5044 Fol. 149

Ward of Siparia.
County of St. Patrick.
Cadastral Sheet G.13.E 63E
2/c



- 1 C.T. Vol. 3723 Fol. 327
- 2 C.T. Vol. 3723 Fol. 333
- 3 C.T. Vol. 3723 Fol. 339

Bk. 897:17
Bk. 1227:18
Bk. 1233:33

Orig-BK. 1233:33

Approved *[Signature]*
Director of Surveys 2006.01.05
Bearings are Cassini Grid based on Solar Obs.

○ Denotes Iron Put except otherwise stated.
Distances are in METRES.
Scale : 1/1500.

Plan of 2 Parcels of Land coloured Pink in the Ward of Siparia.
Containing together zero point eight zero five five hectare.
Surveyed by me, with due authority, in August 2004.
In accordance with Reg. (25)1 of the Land Surveyors' Regulations 1998,
I certify that this plan is correct.

Checked by *[Signature]* 2005.12.30
Entered

[Signature]
Trinidad and Tobago Land Surveyor 10th October, 2004.

Lot No.	Vol. & C.T.	NAMES
1		
2		
3		
4	Vol. 5044 Fol. 161	Bhagwandin Raghunathsingh and Sukdaye Raghunathsingh
5	Vol. 5044 Fol. 153	Bhagwandin Raghunathsingh and Sukdaye Raghunathsingh



1358/112