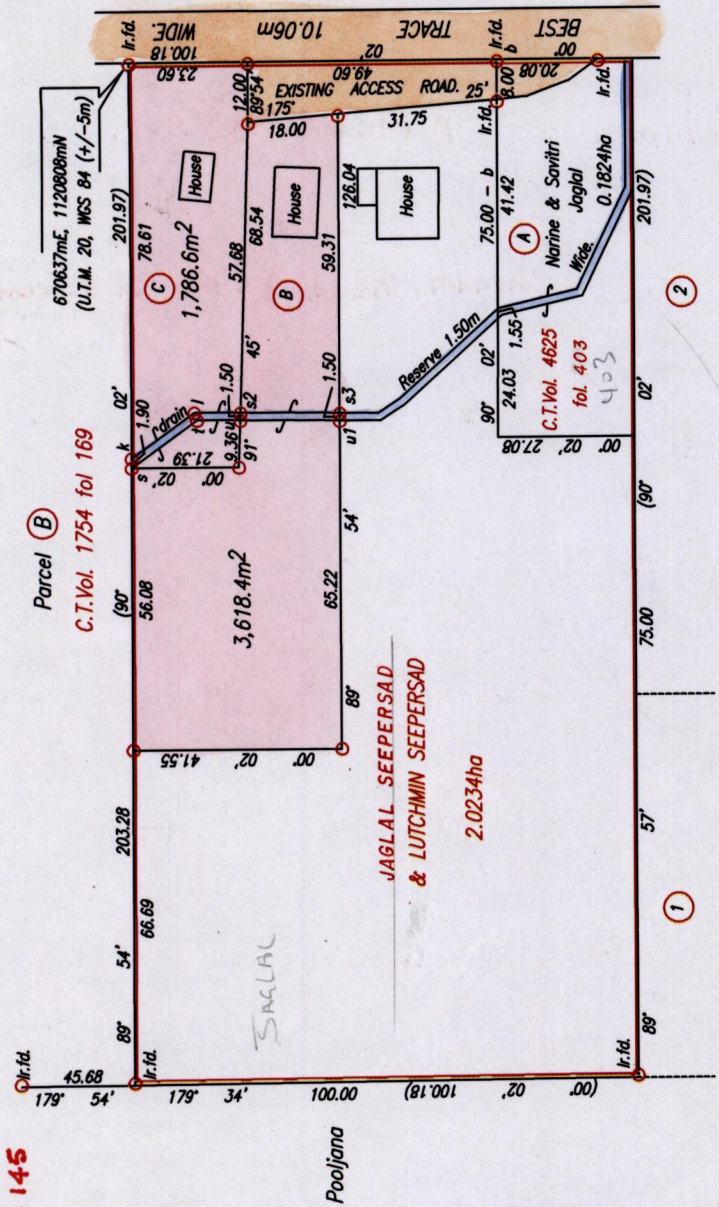


Cadastral Sheet G.18.B. 73C  
 1/d  
 Ward of Siparia  
 County of St.Patrick  
Rock Road Penal

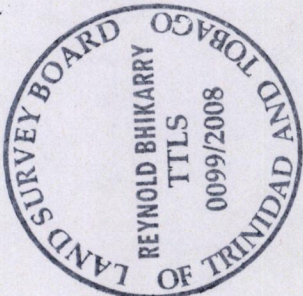
R.P.O. Vol. 124 Fol. 41  
 C.T. Vol. 2006 Fol. 253  
**Vol. 5099 Fol. 145**  
 Vide Bk. 1005 fol 51  
 " " 1289 " 7



LEGEND		
s - t	144° 08'	16.11
t - u	180° 39'	8.62
k - l	144° 08'	75.44
l - s2	180° 39'	9.21
u - u1	180° 39'	19.86
s2 - s3	180° 39'	19.81

Orig. - Bk. 1005: 51  
 SCALE 1:1500  
 Distances are in metres

Coordinates obtained from hand held GPS.  
 o Denotes Iron put except where otherwise stated  
 Bearings are Cassini Grid based on Solar Observations



Approved *Yerra Deep*  
 Director of Surveys  
 2008-9-11

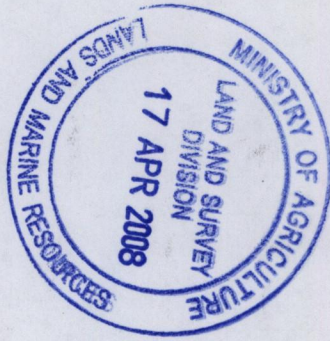
PLAN of 2 Parcels of land coloured pink in the Ward of Siparia  
 Containing together five thousand, four hundred and five point zero square metres.  
 Surveyed by me, with due authority, in March, 2006  
 In accordance with Regulation 25 (1) of the Land Surveyors' Regulations 1998,  
 I certify that this plan is correct.

Checked by *Mary 9/11/08*  
*Ravindra Bihary*  
 14th April 2008.  
 Entered on . . . . . Trinidad & Tobago Land Surveyor. . . . . 2008.



13270  
01/281

Original Plan 396 to 157.



Lot No.	CT. & Volume	NAMES.
A		
B		Chandra, Ramdath & Narrad u. Jeenth
C.		