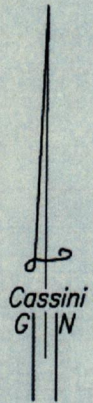
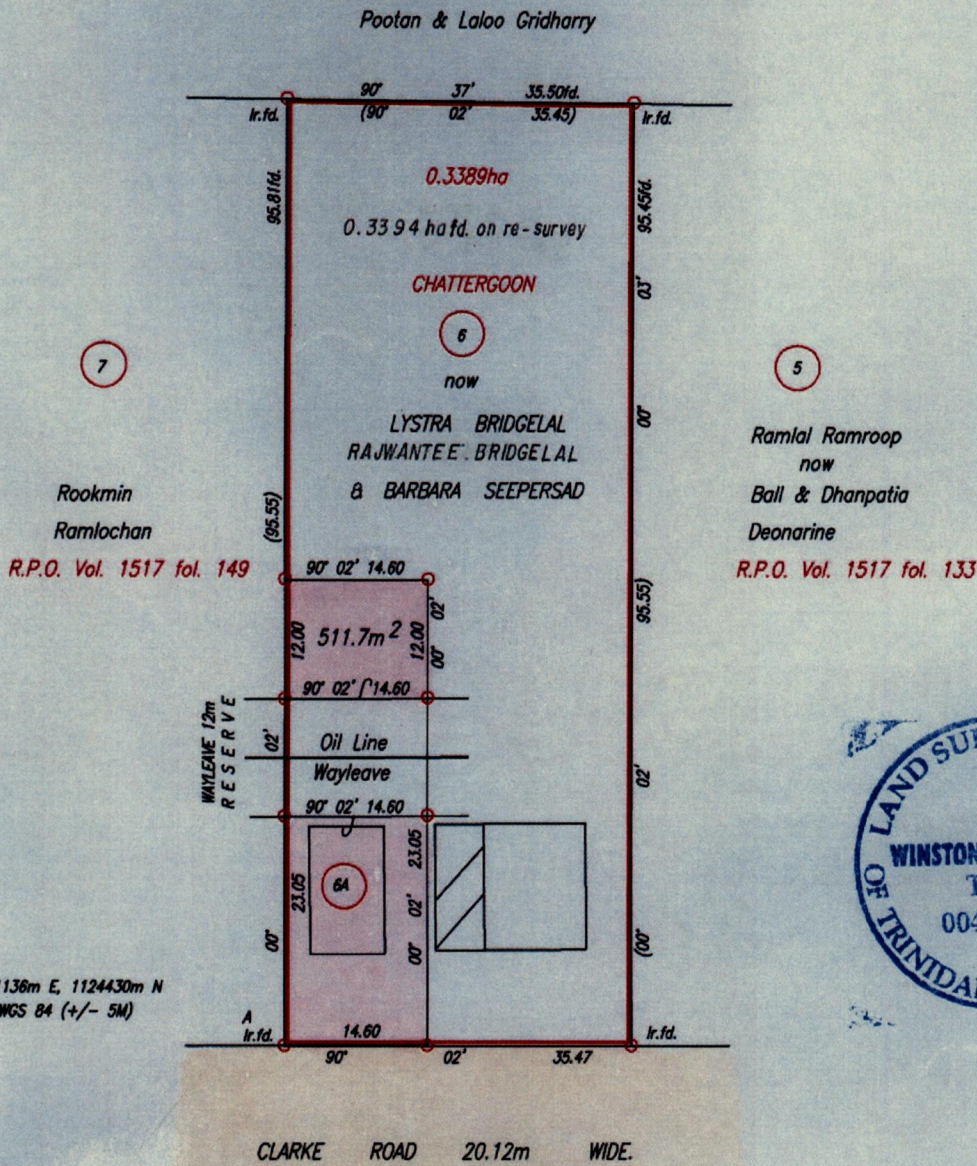


R.P.O. Vol. 190 Fol. 203
C.T. Vol. 1517 Fol. 163
Plan C.J. 80

Cadastral Sheet G.13.K. 63F
Ward of Siparia 3/b/2
County of St.Patrick.

Vol. 5049 Fol. 141



Ir.f.d. A 671136m E, 1124430m N
U.T.M. 20, WGS 84 (+/- 5M)

Orig- PLAN C.J. 80

Approved *[Signature]*
Director of Surveys
2008-5-28

RUSSEL & AMEY ALI BRIDGELAL

Note : Coordinates obtained from hand held G.P.S.

SCALE 1:750

o Denotes Iron put except otherwise stated.

Distances are in Metres

Bearings are Cassini Grid based on Solar Observations.

PLAN of a Parcel of land coloured pink in the Ward of Siparia

Containing five hundred and eleven point seven square metres.

Surveyed by me, with due authority, in January, 2007

In accordance with Regulation 25(1) of the Land Surveyors' Regulations 1998,

I certify that this plan is correct.

Checked by *[Signature]* Winston Ramcharan

Entered Trinidad & Tobago Land Surveyor . 14th February . 2008

