

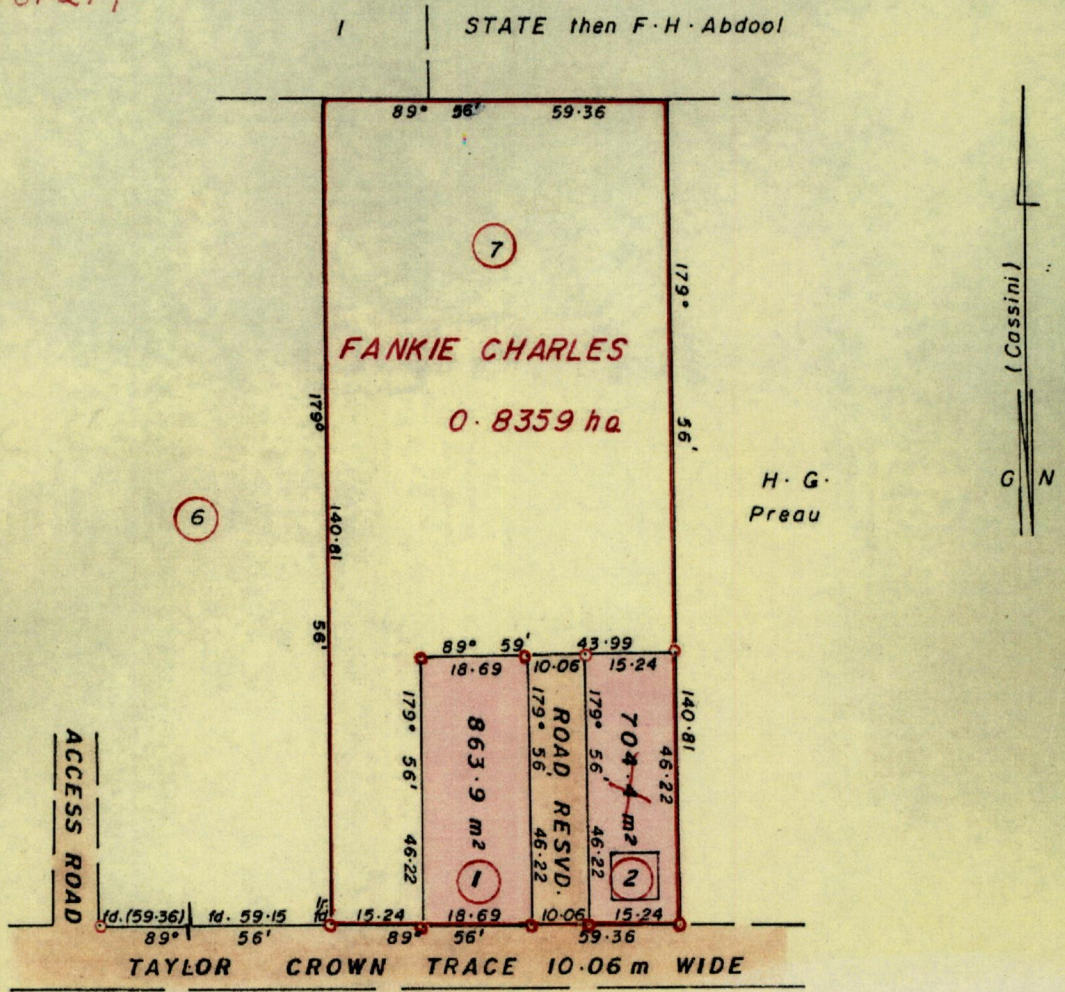
No

24253

R.P.O. Vol. 43  
C.T. Vol. 2387  
Vol. 4598 Fol. 217

Fol. 601  
Fol. 235

Ward of Savana Grande  
County of Victoria  
Cadastral Sheet G·10·N·  $\frac{64B}{47d}$



Orig- Bk. 980 : 70

Approved

*Alton...*  
Director of Surveys  
88.12.21

Iron out at all corners except stated otherwise  
SCALE 1:1250

Note: To obtain compass bearings add/subtract 4 minutes Distances are in metres  
PLAN of  $\frac{2}{4}$  Parcel of land coloured pink in the Ward of Savana Grande  
Containing together one thousand five hundred and sixty eight point three sq. metres  
Surveyed by me, with due authority, in MAY 1988

I certify that I have complied with rule 76 under section 14(2)(d) of the  
Land Surveyors' Ordinance 1952, and that this plan is correct.

Checked by *SP 20/12/88* ..... *Winston Rambaran*  
Entered ..... Land Surveyor, Trinidad *21st May* 1988

