

B N<sup>o</sup> 4322

Vol. 5036 Fol. 41

R.P.O. Vol. 50

Fol. 489

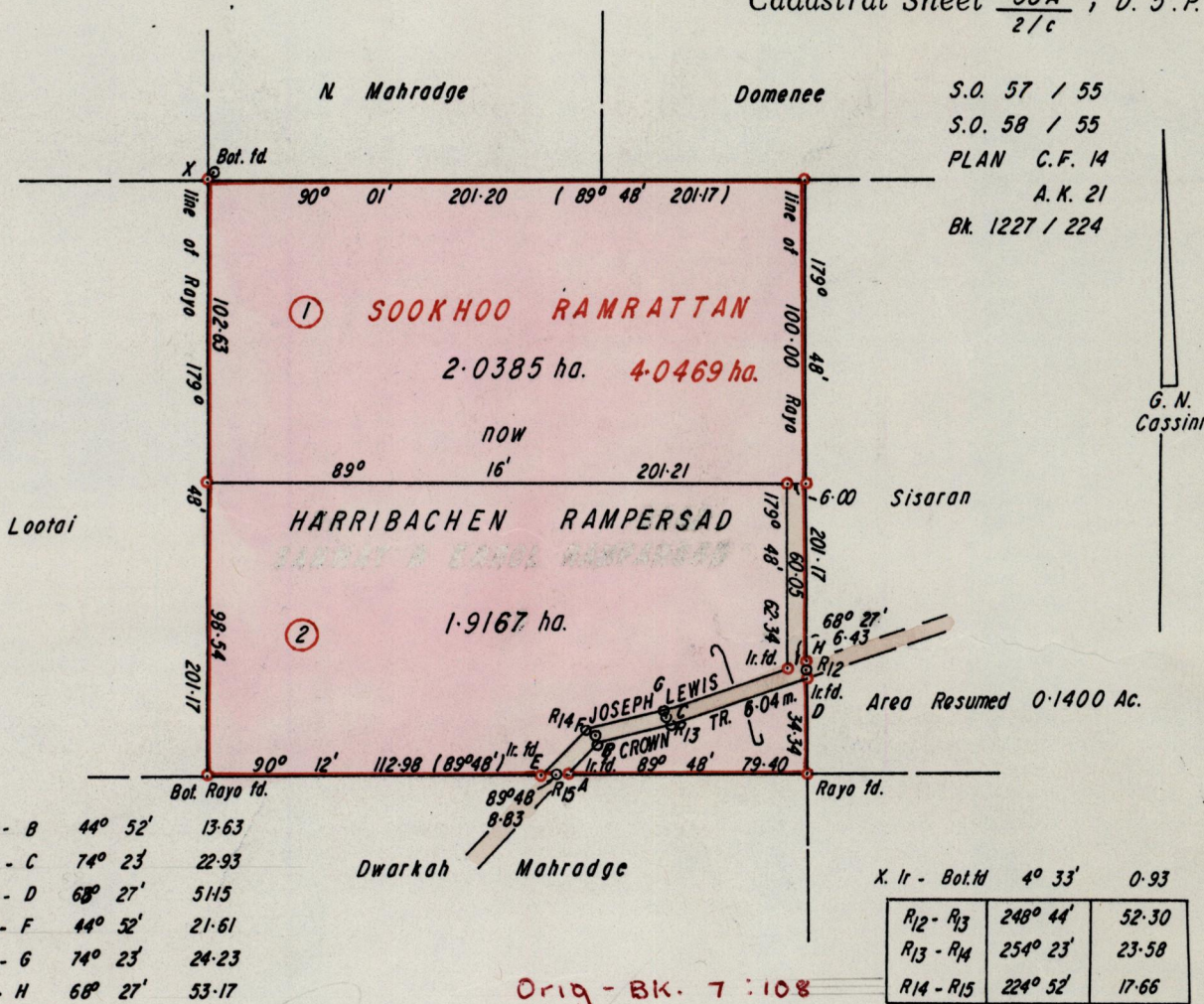
Ward of Tamana

C.T. Vol. 1336

Fol. 403

County of St. Andrew

Cadastral Sheet  $\frac{35A}{2/c}$ , D. 5. P.



Approved *[Signature]*  
 Director of Surveys  
 29.1.26

o Denotes Iron put.  
 Bearings are Cassini based on Solar Obs.

SCALE 1 / 2500

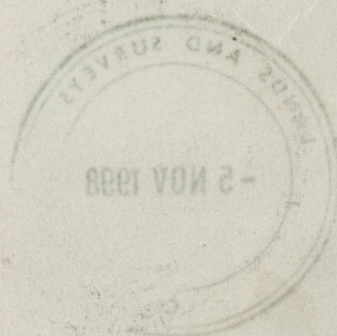
Note: To obtain compass bearings add/subtract minutes Distances are in metres

PLAN of 2 Parcels of land coloured pink in the Ward of Tamana  
 Containing together three point nine five five two hectares  
 Surveyed by me, with due authority, in October & September 1998

I certify that I have complied with rule 76 under section 14(2)(d) of the  
 Land Surveyors' Ordinance, 1952, and that this plan is correct.

Checked by *[Signature]* 29.1.15

Entered ..... Land Surveyor, Trinidad ..... 19. 28  
 and Tobago



Original BK. 7 fol. 108

Lot 1. Vol. 5039 Fol. 45 Mahadeo Sookan.

Lot 2. Vol. 5039 Fol. 47 Mahadeo Sookan.



1249/21