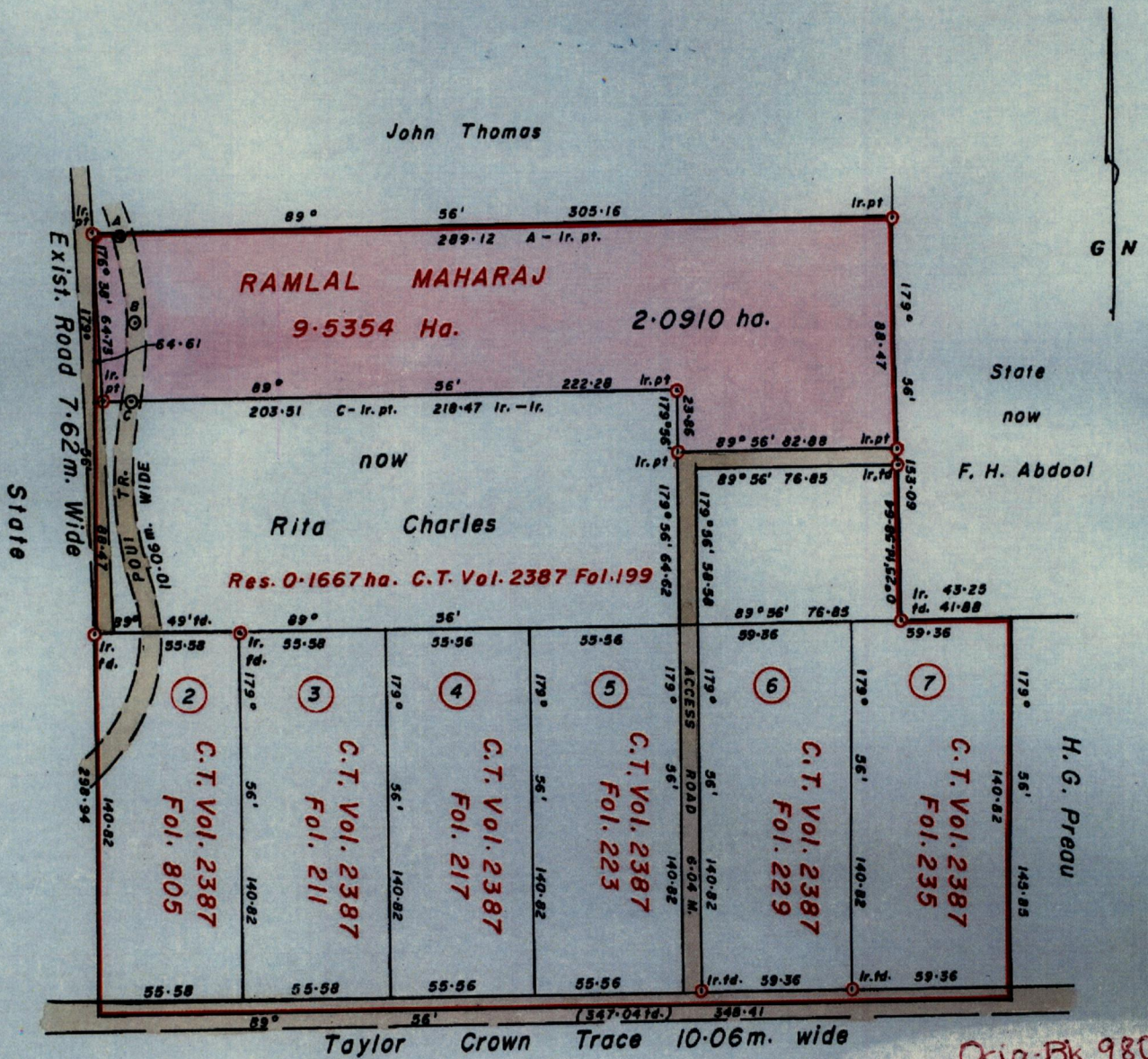


R.P.O. Vol. 43 Fol. 601
C.T. Vol. 740 Fol. 113
Vol. 5048 Fol. 315

Ward of Savana Grande
County of Victoria
Cadastral Sheet 64B, G.10.N
Bk.1155!301 4/d



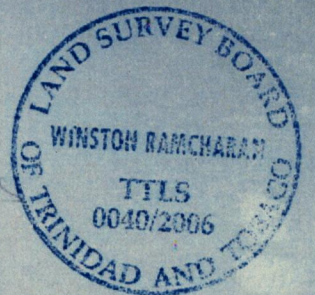
Orig. Bk. 980:70

STA. ALONG E OF ROAD

| Sta. | Bearings | Dist. |
|-------|----------|-------|
| A - B | 169° 30' | 35.00 |
| B - C | 186° 45' | 30.40 |

Approved.....
Director of Surveys
2006.6.26

Rita Charles



SCALE 1/2500
Distances are in metres

Note: To obtain compass bearings subtract 4 minutes.
Bearings are based on Solar Observations

○ Denotes Iron put unless otherwise stated

PLAN of a Parcel of land coloured pink in the Ward of Savana Grande
Containing two point zero nine one zero hectares
Surveyed by me, with due authority, in Dec. 1985
In accordance with Regulation 25 (1) of the Land Surveyors' Regulations 1998,
I certify that this plan is correct.

Checked by.....
.....

Entered on.....
Trinidad & Tobago..... 9th May 2006.....
Land Surveyor

