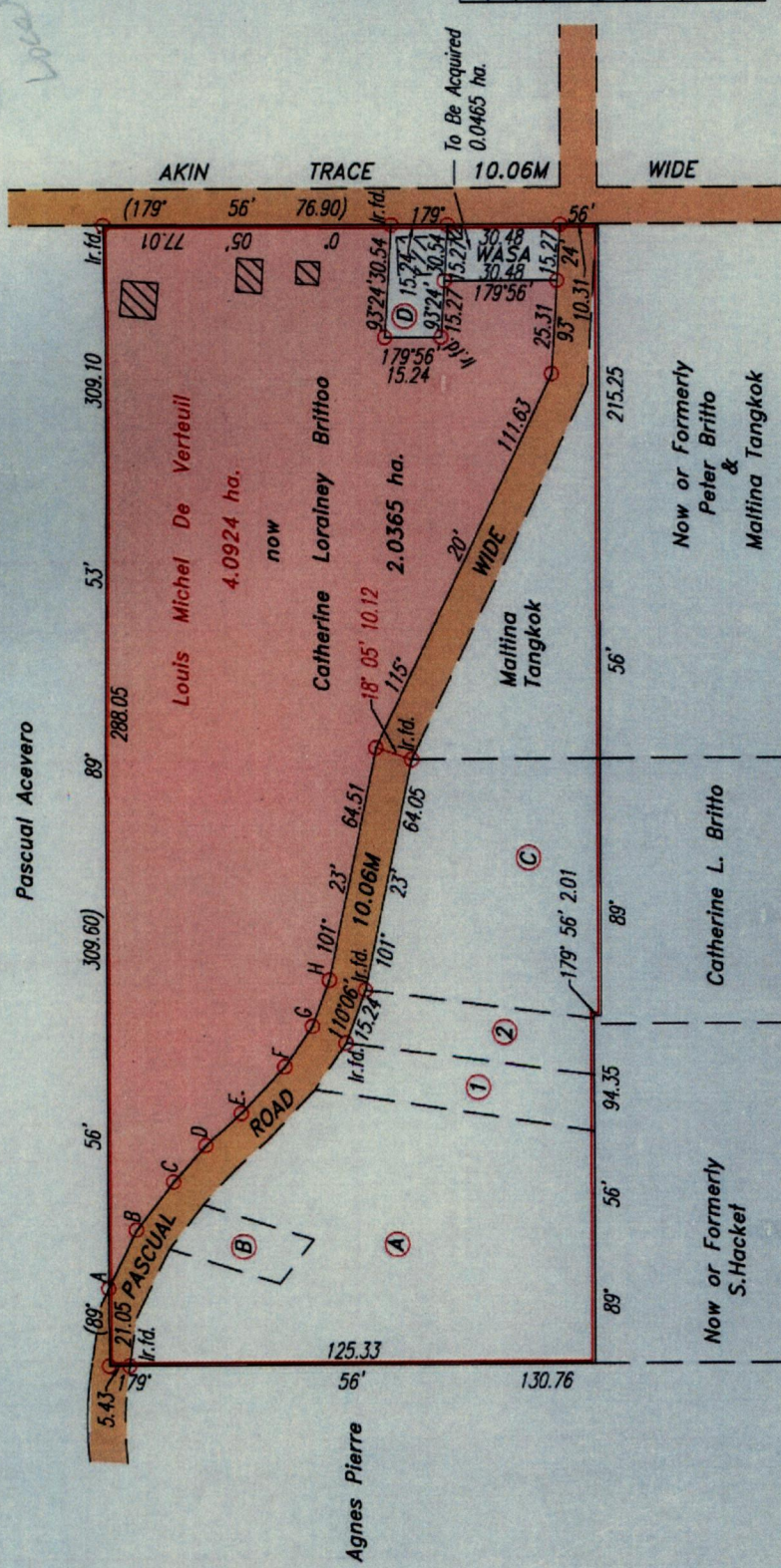


Vol. 5046 fol. 45
 R.P.O Vol. 20 Fol. 255
 C.T. Vol. 430 Fol. 27

Ward of Savana Grande & Pointe a Pierre
 County of Victoria.
 Cadastral Sheet (D.24.J), 54B
 2/c

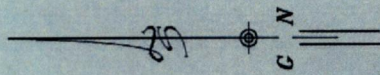


Station	Bearing	Distance
A-B	115° 21'	17.55
B-C	127° 10'	16.40
C-D	131° 16'	13.07
D-E	137° 41'	12.86
E-F	132° 58'	17.17
F-G	124° 12'	13.22
G-H	110° 06'	13.22

Lot No.	NAME	AREA	C.T Vol.	Fol.26
A	Janet Ramcharan	0.7117 ha.	3345	26
B	Isaac Solomon Garroway & Joyce Ramdaye Garroway	0.1024 ha.	2100	295
2	Roy Francis	0.0958 ha.	2100	303
C	Kenneth Sinanan & Sylvia Sinanan	0.3825 ha.	3430	537
D	Dennis Piper & Majella Knuth Piper	0.0465 ha.	3345	359
	Maitina Tangkok	0.3035 ha.	1769	345

1332

37



Ref: Bk. 950 Fol. 545
 Bk. 1189 Fol. 64
 Catherine Lorainey Brittoo

Orig. Bk. 997:12

SCALE 1:2000

Distances are in metres.

Note: Bearings are Cassini grid based on solar observations. To obtain compass bearing add 4 minutes.

Plan of a Parcel of land coloured pink in the Ward of Savana Grande & Pointe a Pierre

Containing two point zero three five hectares

Surveyed by me, with due authority, in November 2005.

In accordance with Regulation 25(1) of the Land Surveyors' Regulations

I certify that this plan is correct.

Checked by: *M.C. 9/1/06*

Entered

Trinidad & Tobago Land Surveyor



Approved: *[Signature]*
 Director of Surveys
 7006-11-18

○ Denotes Iron put except otherwise stated.

