

Vol 5062 Fol 97
R.P.O. Vol.162 Fol. 187

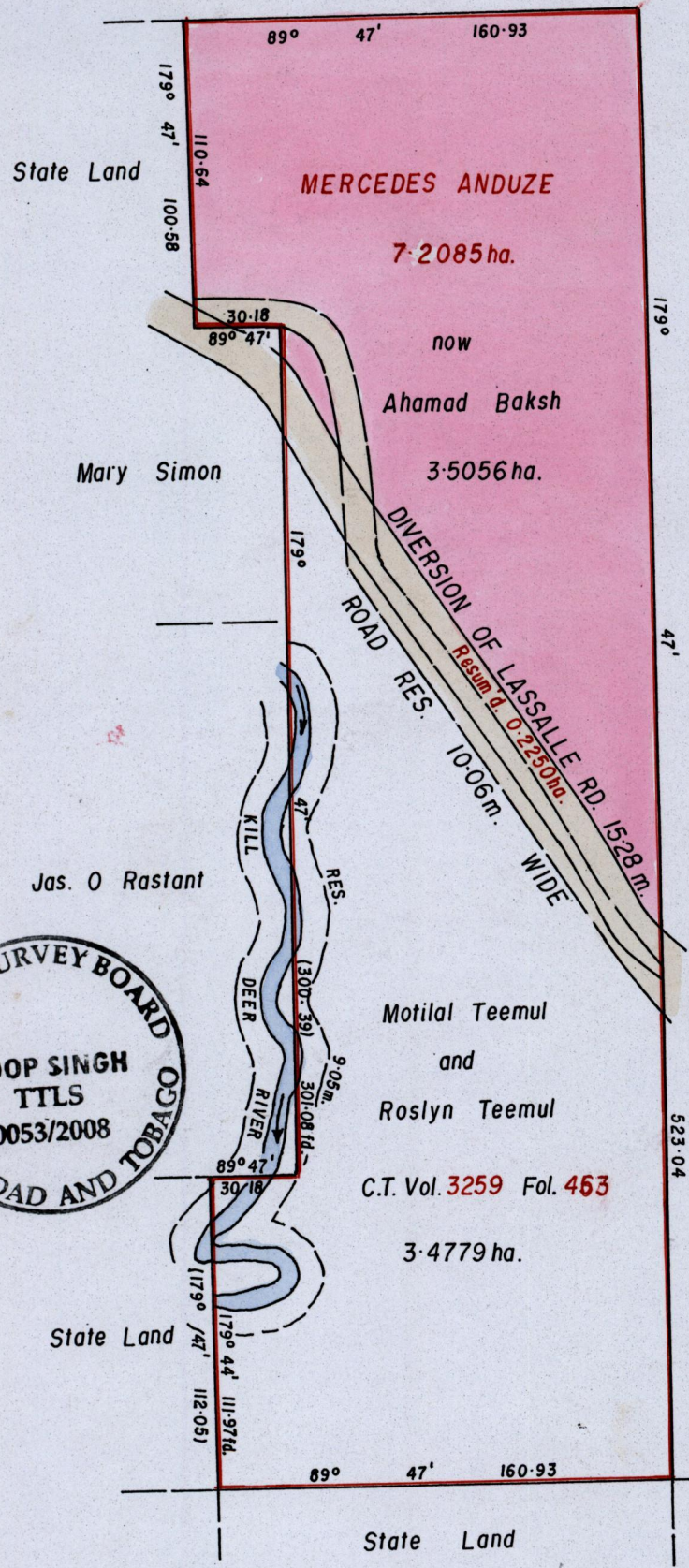
Cadastral Sheet E.12.M. 45C
1/a & 1/c

C.T. Vol.1033 Fol. 253

State Land

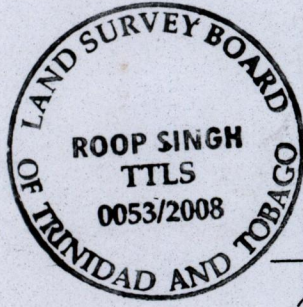
Ward of Cocal

County of Nariva



G N Cassini

See Bk.186:27
See Bk.1179:40



C.T. Vol. 3259 Fol. 463

Orig Bk. 186 : 27

Approved: *[Signature]*
Director of Surveys 2008.6.30

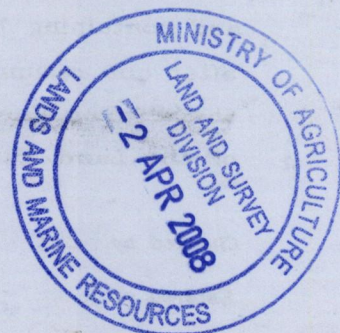
186:27
Motilal Teemul
Roslyn Teemul
SCALE 1/2500
Distances are in metres.

This is a true copy of a diagram of Seven Point Two Zero Eight Five Hectares originally transferred to MERCEDES ANDUZE shewing a portion coloured pink and containing Three Point Five Zero Five Six Hectares, being the remainder after one resumption & one previous transfer of other portions of the land, ~~the dividing lines having been run~~. In accordance with Regulation 25 (1) of the Land Surveyors' Regulations 1998, I certify that this plan is correct.

Checked by *[Signature]*
Entered on

[Signature]
Trinidad & Tobago Land Surveyor. 1st March 2008

Original Bl. 1179: 40



1418/16.