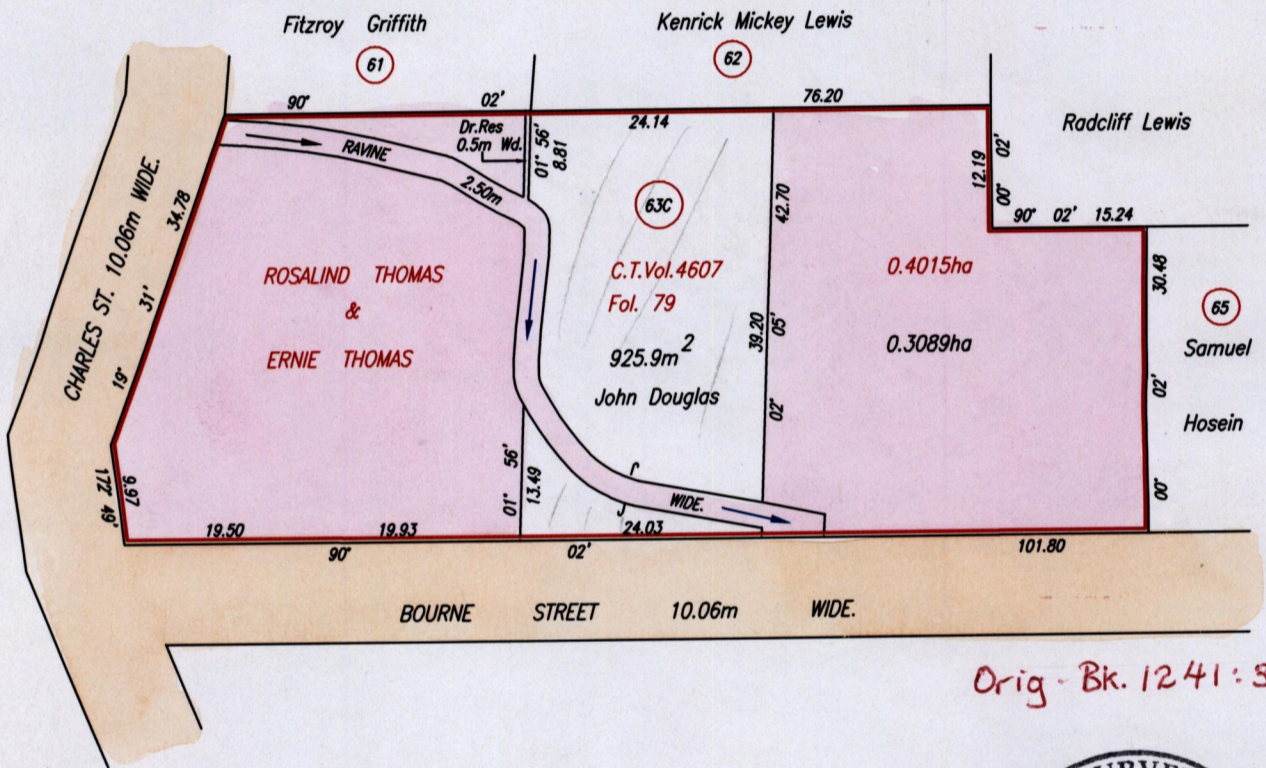


R.P.O. Vol. Fol. Remaining Portion  
C.T. Vol. 4179 Fol. 237

Cadastral Sheet D.22.K. 53C  
2/c  
Ward of Pointe - a - Pierre.  
County of Victoria

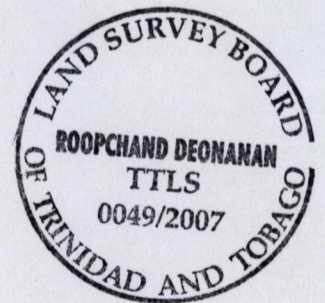
Vide Bk. 1195 fol 5  
Vide Bk. 1241 fol 39

Vol. 5060 Fol. 529



Orig - Bk. 1241:39

To register  
for now.



Approved *[Signature]*  
Director of Surveys  
2008-3-20

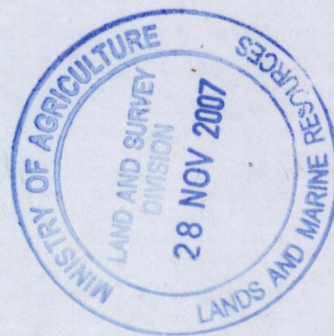
SCALE 1:750  
Distances are in Metres

This is a true copy of a diagram of zero point four zero one five hectare originally granted to Rosalind Thomas & Ernie Thomas showing a portion coloured pink and containing zero point three zero eight nine hectare being the remainder after one previous transfer of a portion of the land. In accordance with Regulations 25(1) of the Land Surveyors' Regulations 1998, I certify that this plan is correct.

Checked by *[Signature]* *[Signature]*

Entered on . . . . . Trinidad & Tobago Land Surveyor *26th November* . . . . . 2007  
PATH = EV700 C:\Drawings04\R&E Douglas.dwg.

Original Bl. 1241 - 39



14/8/67