

REMAINING PORTION

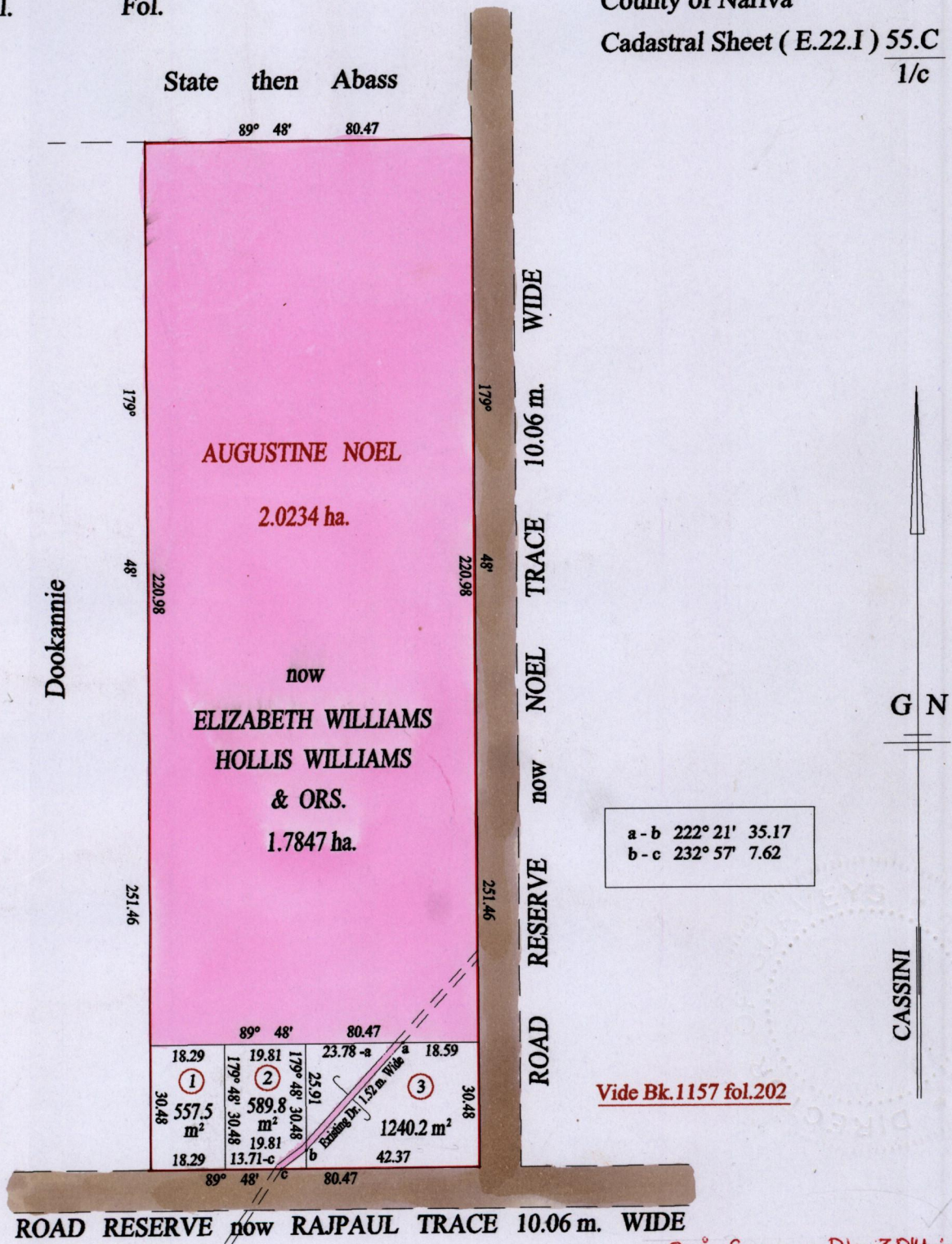
R.P.O. Vol. 216 Fol. 547

C.T. Vol. Fol.

Ward of Cocal

County of Nariva

Cadastral Sheet ( E.22.I ) 55.C  
1/c



a - b 222° 21' 35.17  
b - c 232° 57' 7.62

Vide Bk.1157 fol.202

Orig Survey Bk. 304 : 119

1. MORRIS WILLIAMS C.T.Vol.3105 fol.31
2. FRANCIS WILLIAMS C.T.Vol.3105 fol.39
3. FELIX WILLIAMS & BETTY WILLIAMS C.T.Vol.3105 fol.47

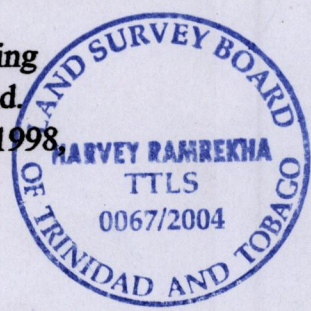
Approved *[Signature]*  
Director of Surveys  
1004-9:3

SCALE : 1:1250

Note: Bearings are cassini grid based on solar observations Distances are in metres

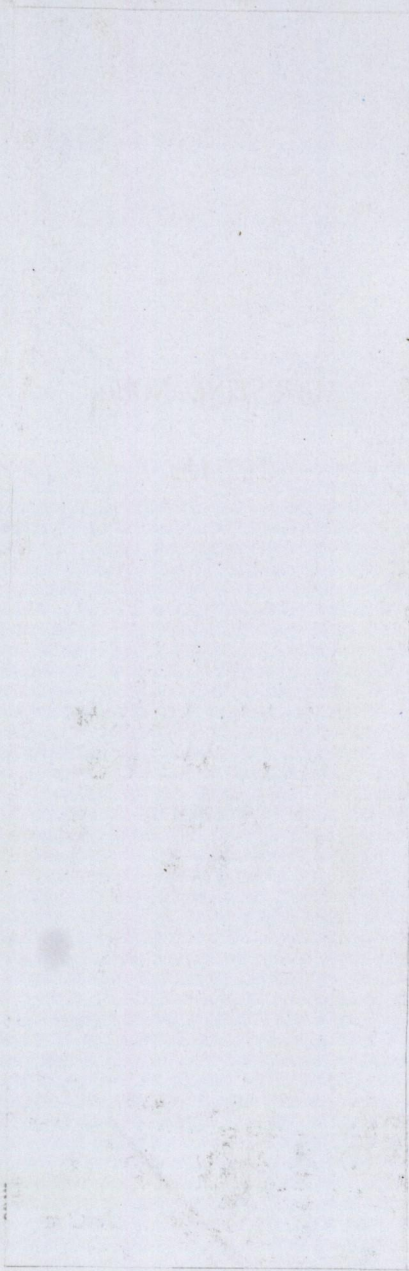
This is a true copy of a diagram of two point zero two three four hectares, originally transferred to AUGUSTINE NOEL, shewing a portion coloured pink and containing one point seven eight four seven hectares being the remainder after three (3) previous transfer of another portion of the land. In accordance with Regulation 25 (1) of the Land Surveyors' Regulations 1998, I certify that this plan is correct.

Checked by *[Signature]*



Entered on ..... Trinidad & Tobago Land Surveyor ... 27.07.2004

Original Sh. 1157: 202



Now 1332/225  
H95/18