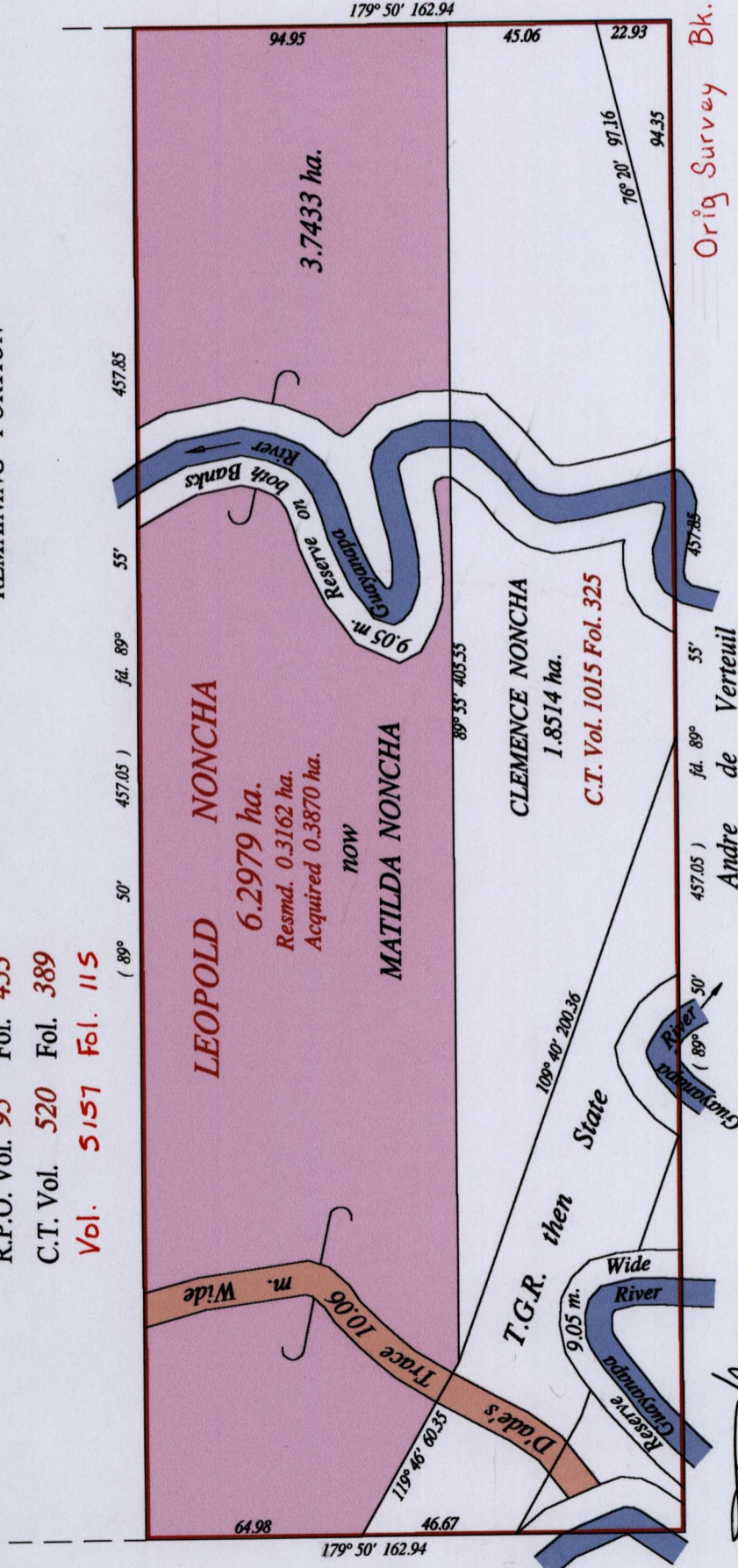


Ward of Charuma
County of Nariva
Cadastral Sheet (E 21 M) 55 B
3/a

Andre de Verteuil

REMAINING PORTION

R.P.O. Vol. 95 Fol. 453
C.T. Vol. 520 Fol. 389
Vol. 5157 Fol. 115



Orig Survey Bk. 327:296

Vide Bk. 834 fol. 161

SCALE : 1:2000

Approved: *J. M. Kemp*
Director of Surveys
2007. 7.10

Note: Bearings are cassini grid based on solar observations Distances are in metres
This is a true copy of a diagram of six point two nine seven nine hectares, originally transferred to Leopold Noncha, shewing a portion coloured pink and containing three point seven four three three hectares being the remainder after one previous transfer, one Resumption and one Acquisition of other portions of the land. In accordance with Regulation 25 (1) of the Land Surveyors' Regulations 1998, I certify that this plan is correct.

Checked by: *M. de G. 29/07*

Entered on Trinidad & Tobago Land Surveyor 28.06.....2007



1987/157
New 1330/222



LAND AND MARINE RESOURCES
DIVISION
29 JUN 2007
LAND AND MARINE RESOURCES

Original Ref: 834:161