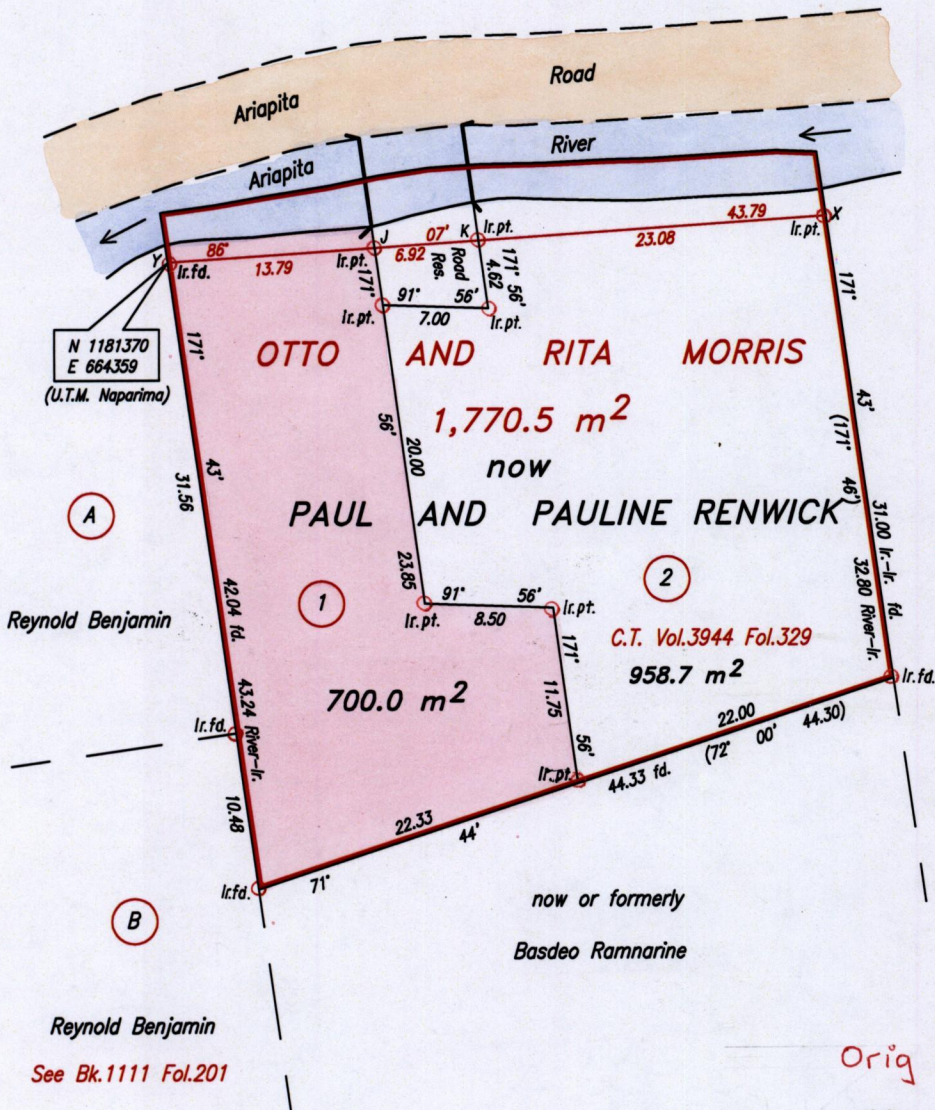
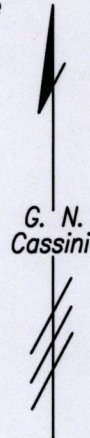


R.P.O. Vol.
C.T. Vol. 2486
Vol. 5167

Fol.
Fol. 161
Fol 281

Cadastral Sheet A.20.C. 13E
1/c
Ward of St. Anns
County of St. George

Vide : Bk.952 Fol.14
Bk.1238 Fol.117



now or formerly
Omah Maharaj
See Bk.956 Fol.98

Y	
43.79	1.20
J = 30.00	4.20
K = 23.08	4.80
15.00	2.00
5.00	1.70
0	1.80
X	266° 07'

Orig Survey Bk. 1238 : 117

Note :

Coordinates obtained by
Digital topo data
For Identification only

SCALE 1:500

Distances are in metres

Approved

[Signature]
Director of Surveys
2009.8.25

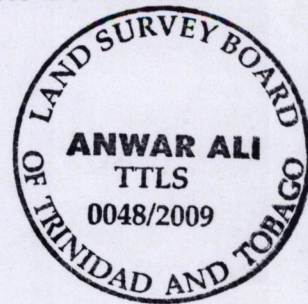
Bearings are based on Solar Observations
PLAN of a Parcel of land coloured pink in the Ward of St. Anns
Containing seven hundred square metres
Surveyed by me, with due authority, in November 1982.
In accordance with Regulation 25 (1) of the Land Surveyors' Regulations 1998,
I certify that this plan is correct.

Checked by *[Signature]* 5/9/09

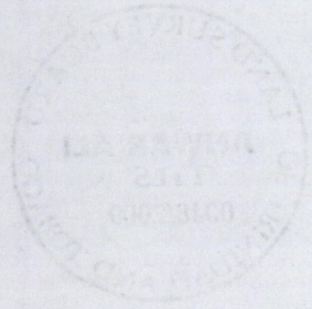
Entered on

Trinidad & Tobago Land Surveyor. 23rd April 2009.

PATH = ADA002 D:\DRAWINGS\RENWICK.DWG.



Original Bl. 1238 : 117



1332/217
1500/169