

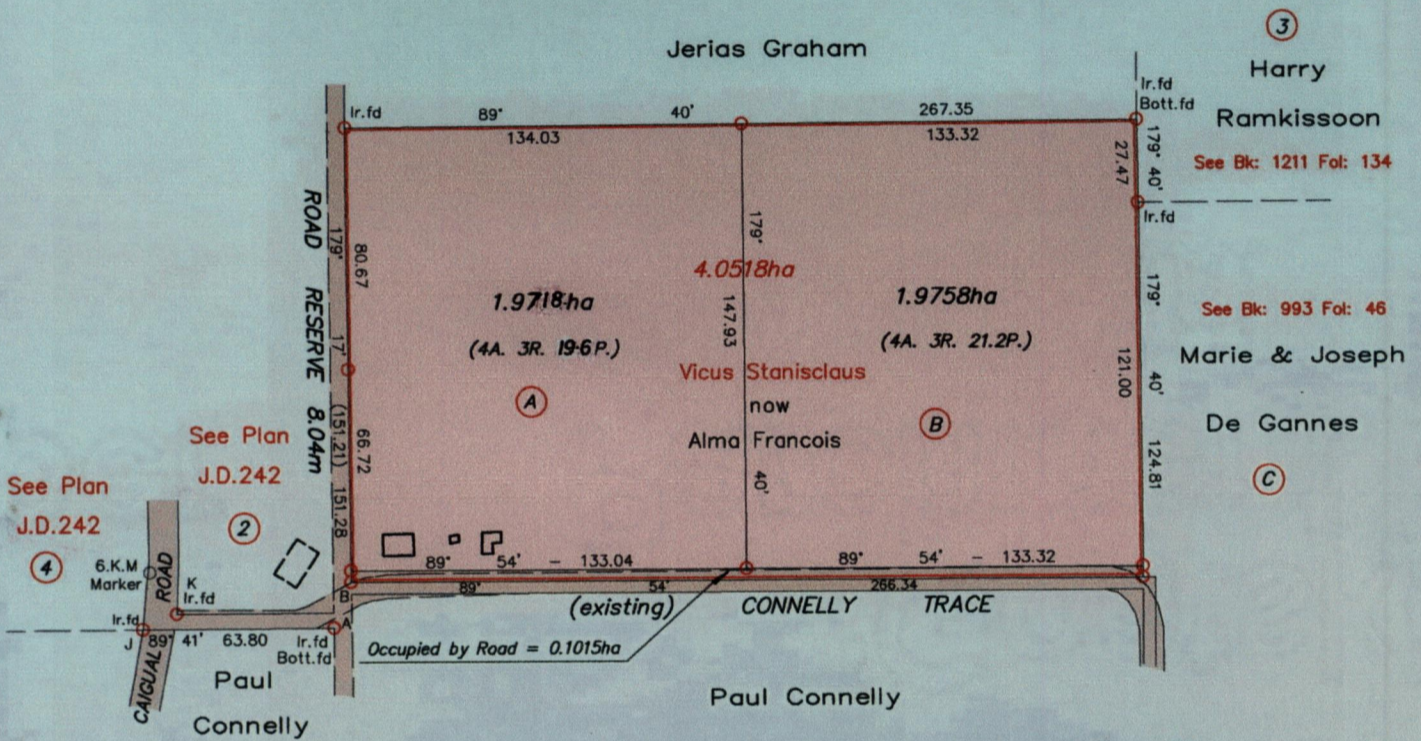
R.P.O Vol. 55 Fol. 483
 C.T. Vol. 1893 Fol. 9
 Vol. 5160 Fol. 67.

1332

Cadastral Sheet E.3.E & F, $\frac{26D}{4/c}$
 Ward of Manzanilla
 County of St. Andrew

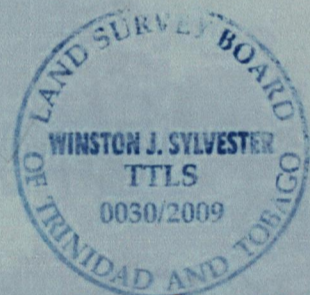
213

GN
 Cassini



TRAVERSE NOTES

A-B=20'47"	- 16.43
J-K=65'37"	- 12.49
J-6K.M=06'53"	-19.45



Approved *[Signature]*
 Director of Surveys
 2009.6.30

Orig Bk. 173 fol. 32

WGS 84 Zone 20 GPS reading at Ir.f.d K
 N 1167132 E 712116 (+/-5.0m)

○ Denotes Iron put unless otherwise stated.
 Bearings are based on Solar Observations

SCALE: 1/2500

Note : To obtain compass bearing add 20 minutes Distances are in Metres.
 PLAN of 2 parcels of land coloured pink in the Ward of manzanilla
 Containing three point nine **four seven six** hectares (9A. 3R. 08P.)
 Surveyed by me, with due authority, in May 2008 for Alma Francois
 In accordance with Regulation 25 (1) of the Land Surveyors' Regulations 1998,
 I Certify that this plan is correct.

Checked by *[Signature]* *[Signature]*

Entered on Trinidad & Tobago Land Surveyor *[Signature]* 30-03-09.

