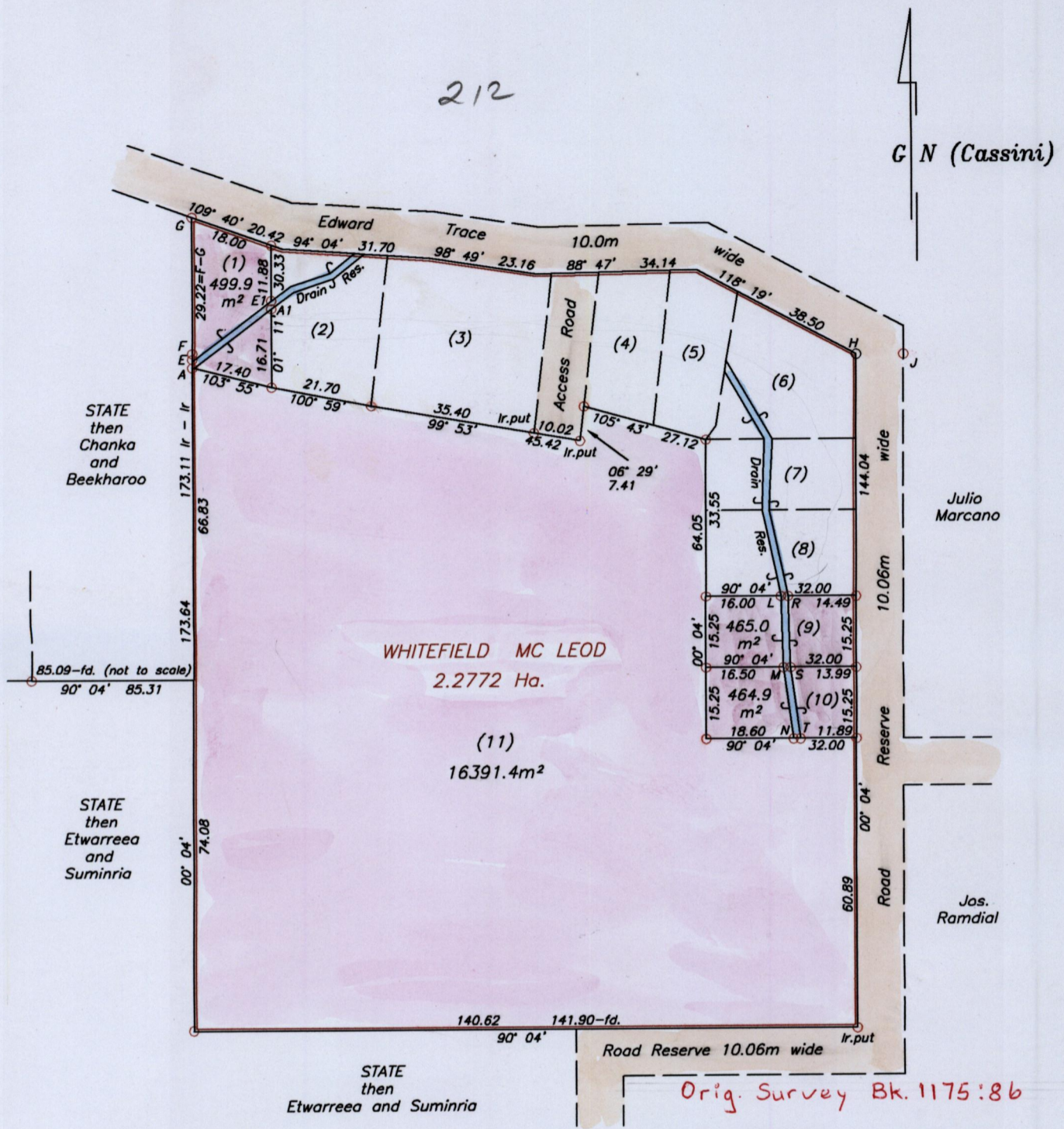


R.P.O Vol. Fol.
C.T Vol. 3128 Fol. 521
Vol. 5167 Fol 235

Ward of Siparia
County of St. Patrick
Cadastral Sheet $\frac{73B}{1/b \& 1/d}$ (G.17.C)

212



Lot#	C.T#	Name	Area(m ²)
2	3800/367	Burnitt Mc Lead	687.1
3	3520/229	Winston Glenis & Whitfeild Mc Lead	1174.7
4	4330/485	Kate Matthews	470.3
5	3784/195	Burnitt Mc Lead	471.3
6	3399/519	Ramdeo Boodoo	682.7
7	3317/325	Keith Bobcombe	463.2
8	3433/225	David Pierre	558.5

References		
Bk. 1179	Fol.	207
Bk. 1175	Fol.	86

Legend		
A - E	00° 04'	1.76
E - F	00° 04'	1.22
H - J	90° 04'	10.06
L - M	178° 11'	15.26
M - N	172° 14'	15.39
R - S	178° 11'	15.26
S - T	172° 14'	15.39
E - E1	53° 32'	21.06
A - A1	53° 32'	21.07



Approved: *[Signature]*
Director of Surveys 2008. 7. 29

- Denotes Iron found unless otherwise stated
- Bearings are Cassini based on solar observations

PLAN of 4 Parcels of land coloured pink in the Ward of Siparia.
Containing together one point seven eight two one two hectares.
Surveyed by me, with due authority, in October 2006 at the request of Winston Mc Lead.
In accordance with Regulation 25 (1) of the Land Surveyors' Regulations 1998,
I certify that this plan is correct.

Checked by: *[Signature]* *[Signature]*
Entered on: Trinidad and Tobago Land Surveyor June 02 2008

SCALE 1:1250
Distances are in METRES

Original Bh. 1179:207



1332/212
14/1/2005