

1332

REMAINING PORTION

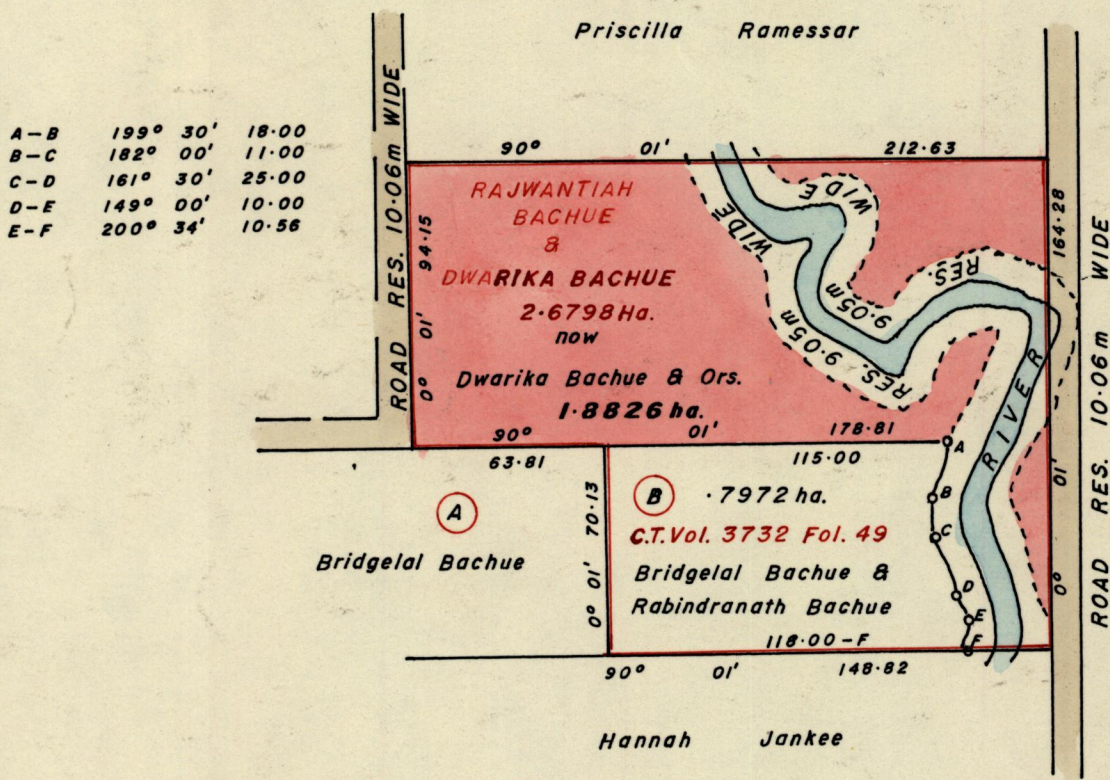
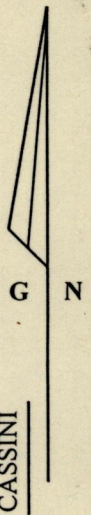
2(1)1

R.P.O. Vol. 221
C.T. Vol. 2367
Vol. 4904

Fol. 37
Fol. 287
Fol. 515

Ward of Siparia.
County of St. Patrick.
Cadastral Sheet G.14.H 73C

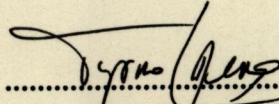
4/a



Bk. 1219:95



Orig Survey Bk. 909:176

Approved 
Director of Surveys
25.2.09.23


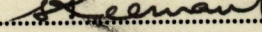
Note: To Obtain compass bearings add/subtract

minutes

SCALE 1:2500.

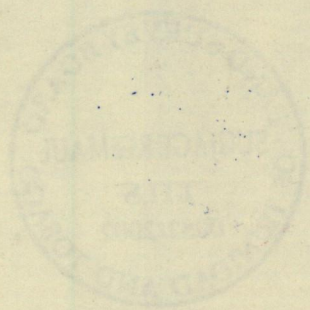
Distances are in METRES

This is a true copy of a diagram of two point six seven nine eight hectares originally granted to RAJWANTIAH BACHUE and DWARIKA BACHUE, showing a portion coloured pink and containing one point eight eight two six hectare being the remainder after one previous transfer of another portion of the land. In accordance with Reg. 25[1] of the Land Surveyors Regulations 1998. I certify that this plan is correct.

Checked by  

Entered Trinidad and Tobago Land Surveyor..... 10th March 2002.

Original Bl. 1219: 95



- 5 AUG 2002
Lands and
Surveys
Division