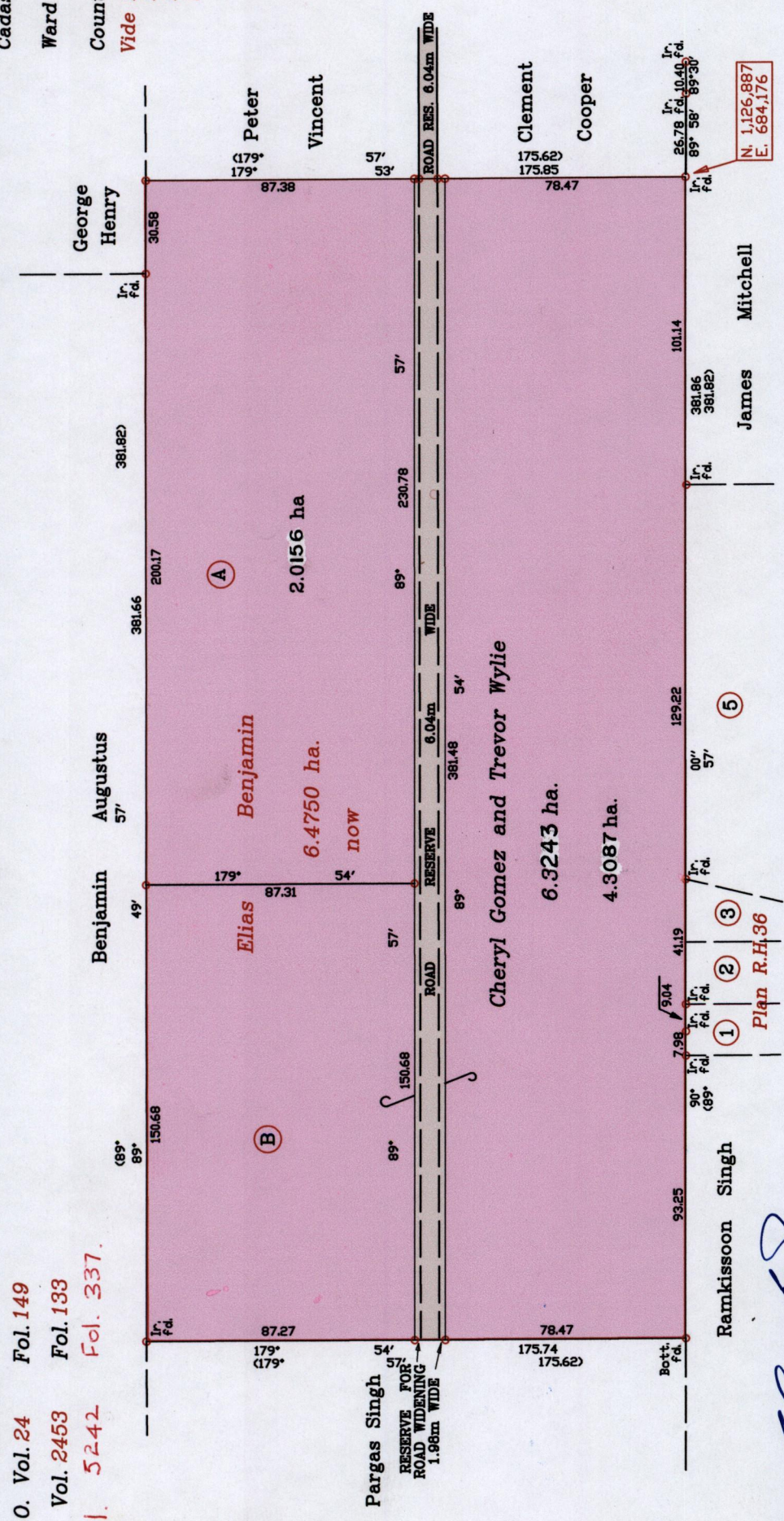


Cadastral Sheet G.15.B. 2/a & 2/b  
 Ward of Savana Grande.  
 County of Victoria.  
 Vide Bk.322 fol.178  
 Bk.322 fol.110  
 Bk.322 fol.36  
 Bk.1182 fol.13



Orig. Bk. 322 fol. 178



R.P.O. Vol. 24 Fol. 149  
 C.T. Vol. 2453 Fol. 133  
 Vol. 5242 Fol. 337.

Approved: *[Signature]*  
 Director of Surveys. 2010.3.22

SCALE: 1/2000

Note : Coordinates obtained by hand held G.P.S. W.G.S.84 UTM Zone 20 (+/-) 5m minutes Distances are in metres.

PLAN of 2 parcels of land coloured pink in the Ward of Savana Grande. Containing together six point three four three hectares. Surveyed by me, with due authority, in November, 2007 for Cheryl Gomez & Trevor Wylie in accordance with regulation 25 (1) of the Land Surveyors' Regulations 1998,

I certify that this plan is correct.  
 Checked by *[Signature]* 26/07/10  
 Entered on.....

Trinidad & Tobago Land Surveyor..... 2-2-10



Original 64. 322 : 178

Lot No

C.T Vol. & Fol.

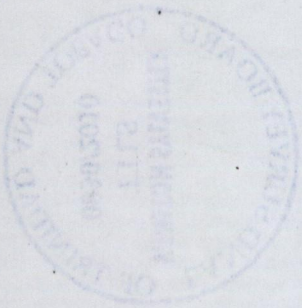
NAME

A

B

Vol. 5242 Fol 341.

Cheryl Gomez Trevor Wylie



1332/200  
1333/134