

1332

199

R.P.O. Vol. 1 Fol. 329

Cadastral Sheet G. 6.N, 62C
3/d &4/c.

C.T. Vol. 2737 Fol. 155

A - N 1128,356 , E - 654,905
UTM ZONE20 , WGS84(+/- 2.00M)
Direct Observation-GPS hand held

County of St. Patrick

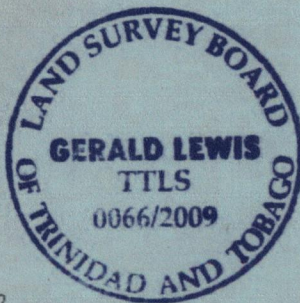
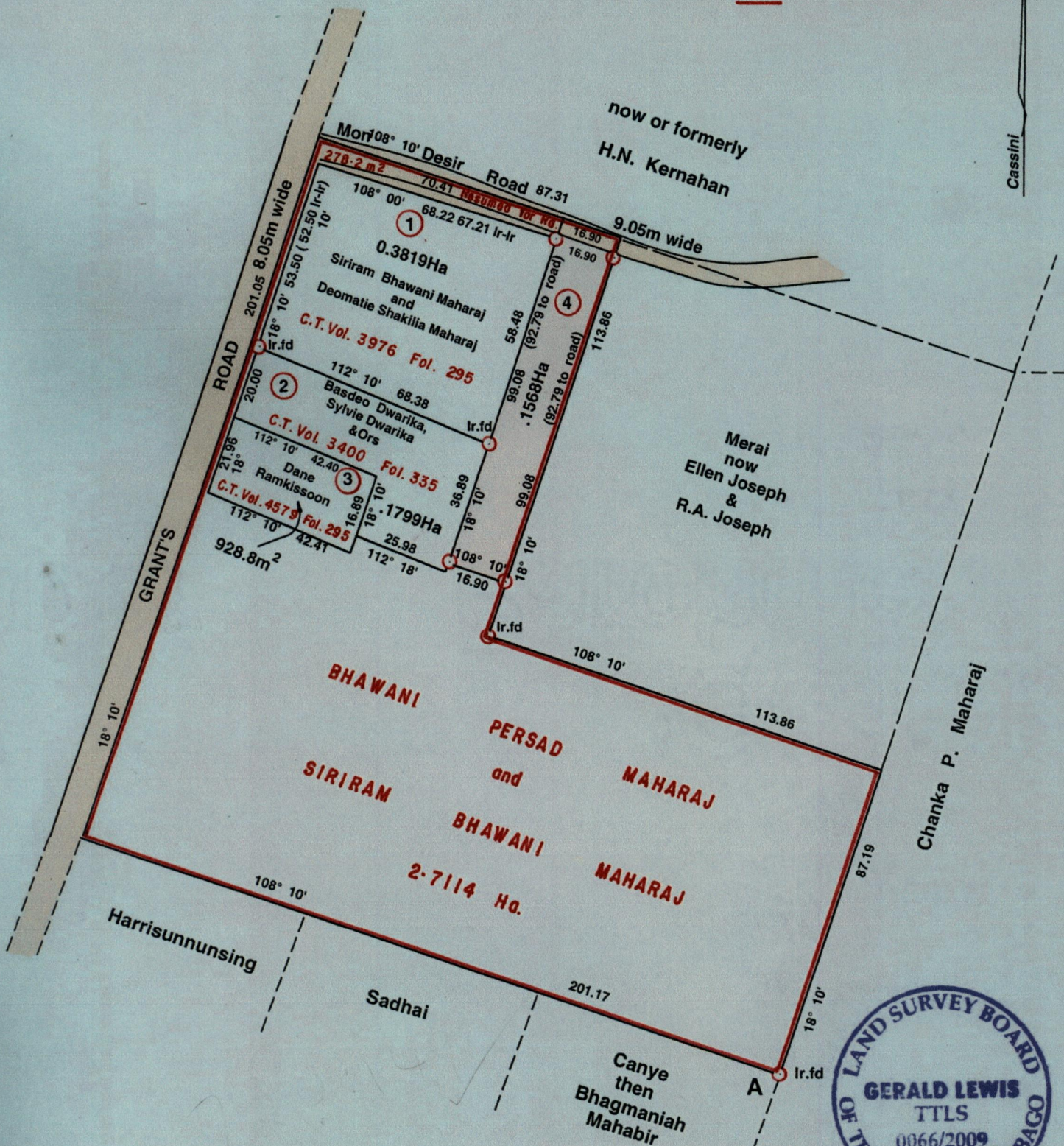
Vol. 5242 Fol. 337

Ward of La Brea

U.P.R.N. No.

Ref. Bk. 950 Fol. 463

G.N.



Orig. Bk. 720:149

Approved
Director of Surveys 2009.12.16

Dion Waime & Sharmela Kalma
Ramdeo Warine
Distances are in Metres

SCALE 1 : 1500

○ Denotes Iron Put unless otherwise stated
Bearings are Cassini Grid based on Solar Obs.

PLAN of a Parcel of land coloured pink in the Ward of La Brea

Containing zero point one five six eight hectares

Surveyed by me, with due authority, in May 2009

In accordance with Regulation 25(1) of the Land Surveyors' Regulations, I certify that this plan is correct

Checked by
30/11/09

.....
Trinidad and Tobago Land Surveyor

Entered by

16/09/2009

