

VOL 5239 Fol 237

R.P.O. Vol. 235 Fol. 277

C.T. Vol. 2265 Fol. 115

1332  
1332/118

194

Cadastral Sheet G.13.L. 63F  
4/a

Ward of Siparia

County of St. Patrick.

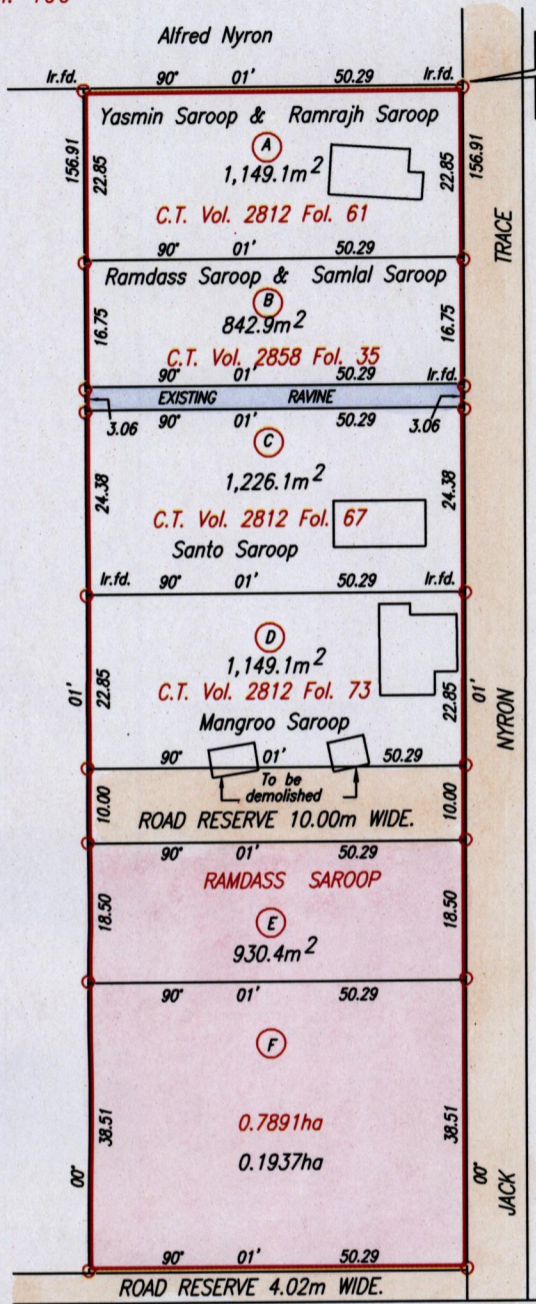
Clarke Road,

Penal.

Parcel 5

Bk.1137 fol. 109

Bk.1017 fol. 199



672620mE, 1123787mN  
(U.T.M. 20, WGS 84 (+/-5m))  
Coordinates obtained from  
hand held GPS.

Cassini  
G  
W



Orig- Bk. 1017 : 199

Approved  
*[Signature]*  
Director of Surveys 2010.3.17

○ Denotes Iron put except otherwise stated.  
Bearings are Cassini Grid based on Solar Observations.

PLAN of 2 Parcels of land coloured pink in the Ward of Siparia  
Containing together zero point two eight six seven hectare  
Surveyed by me, with due authority, in July, 2009  
In accordance with Regulation 25(1) of the Land Surveyors' Regulations 1998,

I certify that this plan is correct.

Checked by *[Signature]*

Entered . . . . . Trinidad & Tobago Land Surveyor 22nd February . . 2010

SCALE 1:1000  
Distances are in Metres

Original Bk. 1137 : 109

Original Survey BK. 1017 fol. 199

Lot No.	Vol. & C.T.	NAME.
E.	Vol 5239 Fol 241.	Mangroo & Sumindra Saroop
F.		



1333/118