

C.T.Vol. 11 Fol. 389

C.T.Vol. 4585 Fol. 519

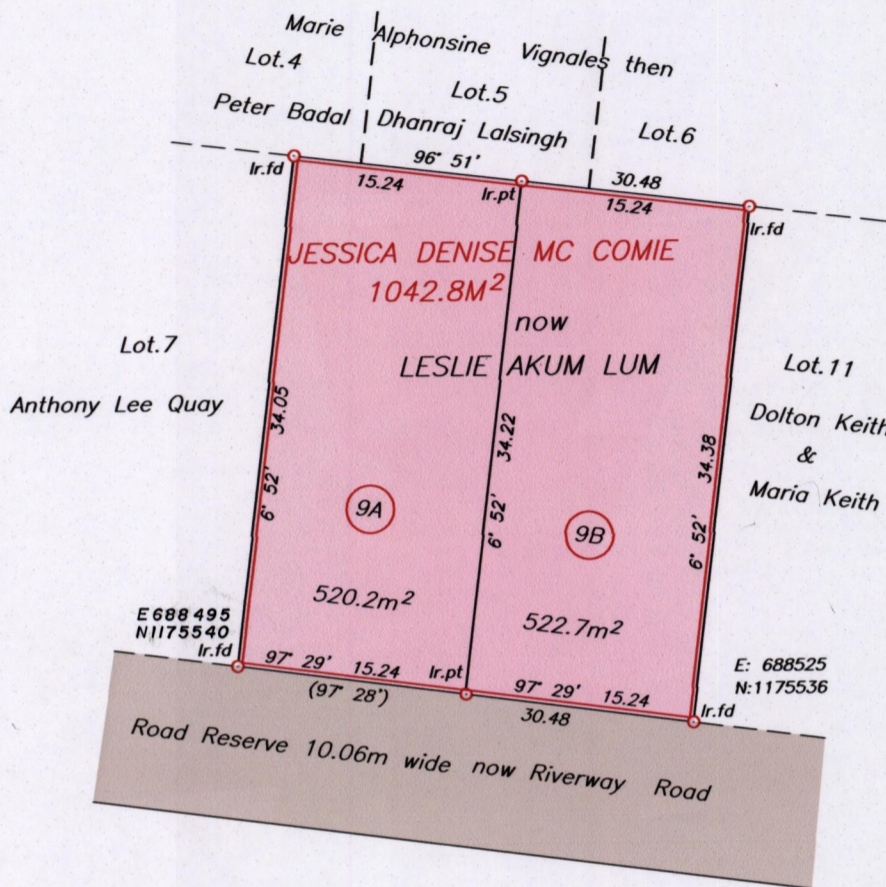
Vol 5228 Fol 1

Cadastral Sheet B.25.A. 24C

4/a

Borough of Arima

County of St. George



Orig Plan RA30
See BK 952:235

Approved

[Signature]
Director of Surveys 2010.3.17

See: Plan.RA.30

UTM.Co-ordinates are obtained from hand held GPS.
Bearings are UTM grid based on Solar Observation
Note: To obtain compass bearings add 28 minutes.

SCALE 1/500
Distances are in metres



PLAN of 2 Parcels of land in the Borough of Arima
Containing together one zero four two point nine square metres
Surveyed by me, with due authority, in April 2006

In accordance with Regulation 25 (1) of the Land Surveyors' Regulations 1998,

I certify that this plan is correct

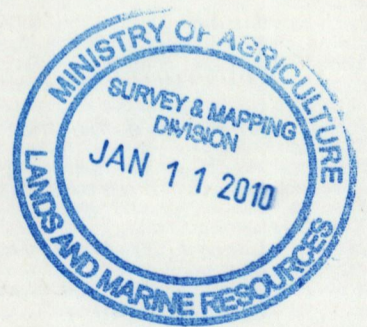
Checked by *Meli 2/3/10*

Justin Baptiste

Entered..... Trinidad & Tobago Land Surveyor..... 28th December 2009

Original Bl. 452: 235

| LOT No. | VOL. & FOL. | NAME |
|---------|-------------|--------------------------------------|
| 9A. | 5228: 7. | ANIL MAHARAJ AND CANDICE PARMASSAR . |



1332/190
1333/111