

1500/13 1332

183

Cadastral Sheet G.18.L. 73C  
47b

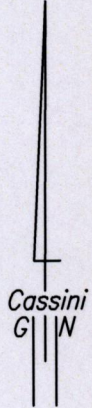
R.P.O. Vol. 239 Fol. 501

C.T. Vol. 4298 Fol. 65

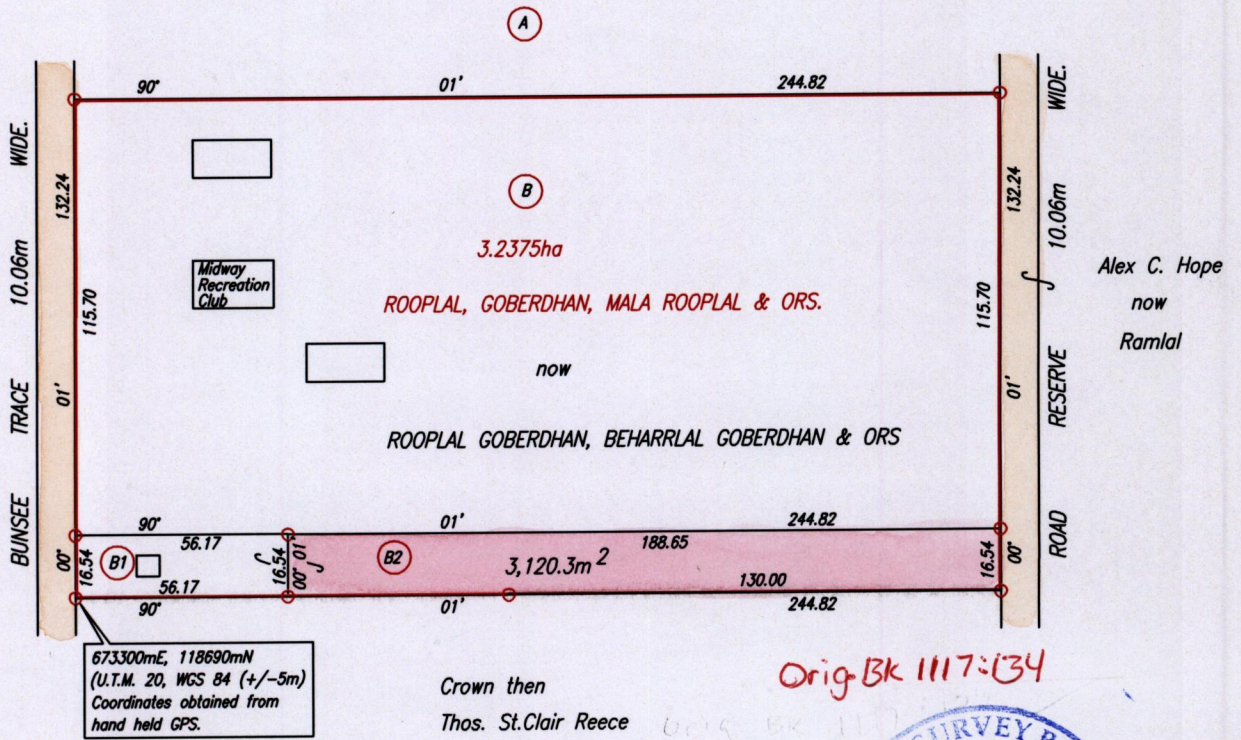
See Bk. 1117 fol 134

Vol. 5188 fol. 61

Ward of Siparia  
County of St. Patrick  
Penal



Toolsie Goberdhan



673300mE, 118690mN  
(U.T.M. 20, WGS 84 (+/-5m)  
Coordinates obtained from  
hand held GPS.

Crown then  
Thos. St. Clair Reece

Orig Bk 1117:134



NOTE : Plot B2 to be amalgamated to Plot B1

Approved *[Signature]*  
Director of Surveys  
2009.8.12

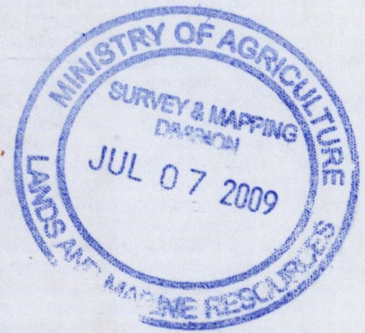
SCALE 1:2000  
Distances are in Metres

○ Denotes Iron found except otherwise stated.  
Bearings are Cassini Grid based on Solar Observations.  
PLAN of a Parcel of land coloured pink in the Ward of Siparia  
Containing three thousand, one hundred and twenty point three square metres.  
Surveyed by me, with due authority, in April, 2009  
In accordance with Regulation 25(1) of the Land Surveyors' Regulations 1998,  
I certify that this plan is correct.

Checked by *[Signature]*

Entered . . . . . Trinidad & Tobago Land Surveyor . *[Signature]* . . . . . 2009

Original Bl. 1117: 134



1332/183  
1500/139