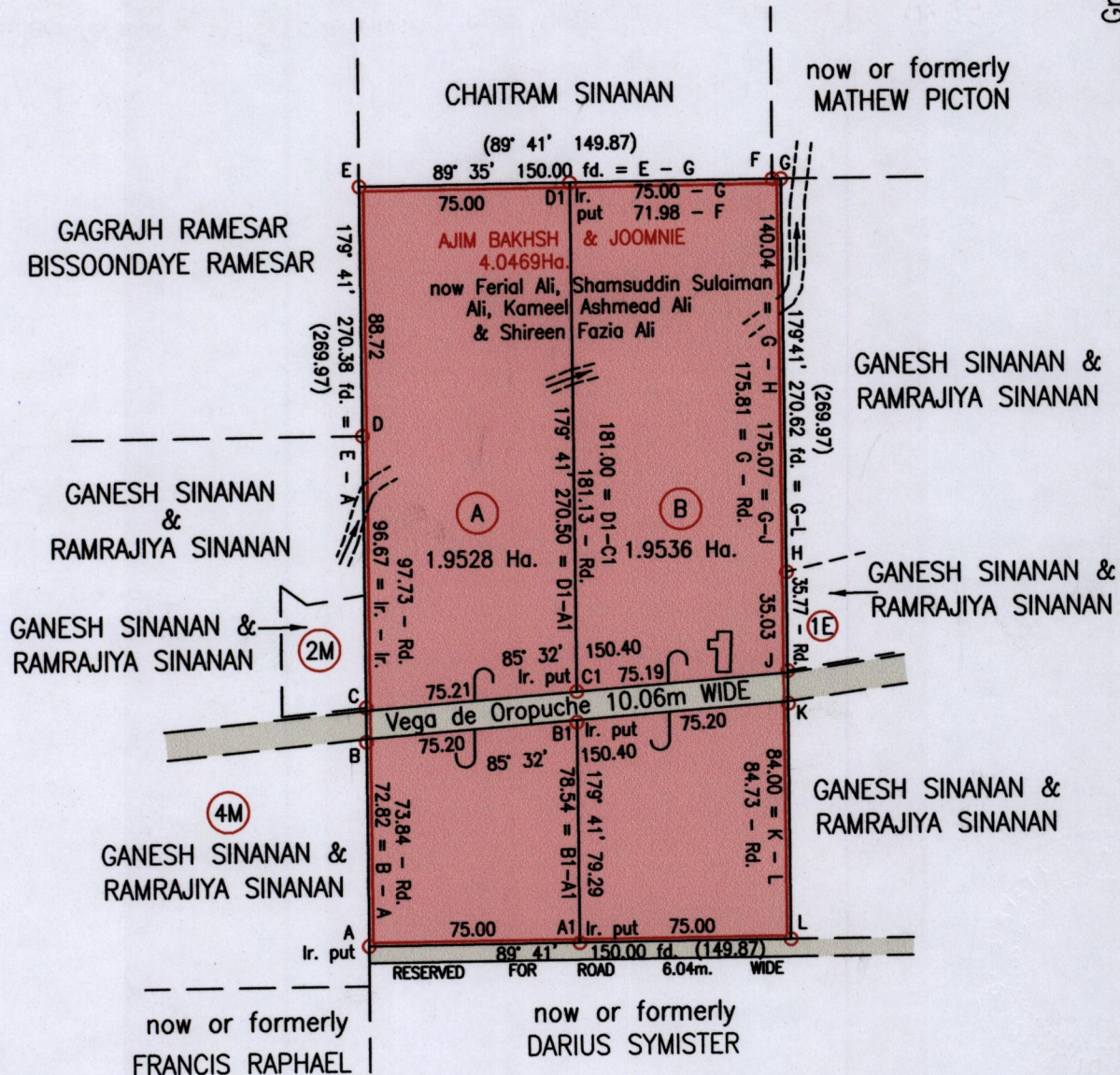


1332

132

Vide Bk 174:48 Plan R.H.90 Plan J.B.280

Grid North Cassini



Orig. BK 174:48

Approved

Signature of Director of Surveys, dated 2009-9-28

E	709136
A	N 1172582

Reliability Error ± 2.0 m. Coordinates are UTM, Naparima 1955 from Garmin GPSmap 60CSx Handheld GPS Receiver Bearings are Cassini Grid based on Solar Obs.

○ Denotes Iron Found unless otherwise stated

Plan of 2 Parcels of land coloured pink in the Ward of Manzanilla Containing together three point eight nine eight four hectares Surveyed by me, with due authority, in February 2009

In accordance with Regulation 25(1) of the Land Surveyors' Regulations 1998, I certify that this plan is correct.

Checked by [Signature] [Signature]

Entered on ..... Trinidad & Tobago Land Surveyor 22<sup>nd</sup> September 2009

LINE	BEARING	DIST.
B - C	359° 41'	12.20
J - K	179° 41'	11.55
C1 - B1	179° 41'	10.95

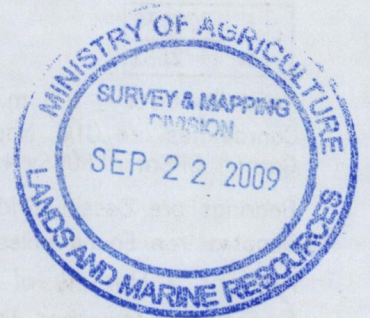
SCALE 1:2500

Distances are in Metres



Original Bl. 174348

LOT No.	CT. VOLUME & FOLIO	NAMES
A	5280 fol. 119	SHAMSUDDIN SULAIMAN, KAMEEL ASHMEAD, SHIREEN ALI
B	5280 fol. 121	FERIAL ALI



1332/182  
1500/212