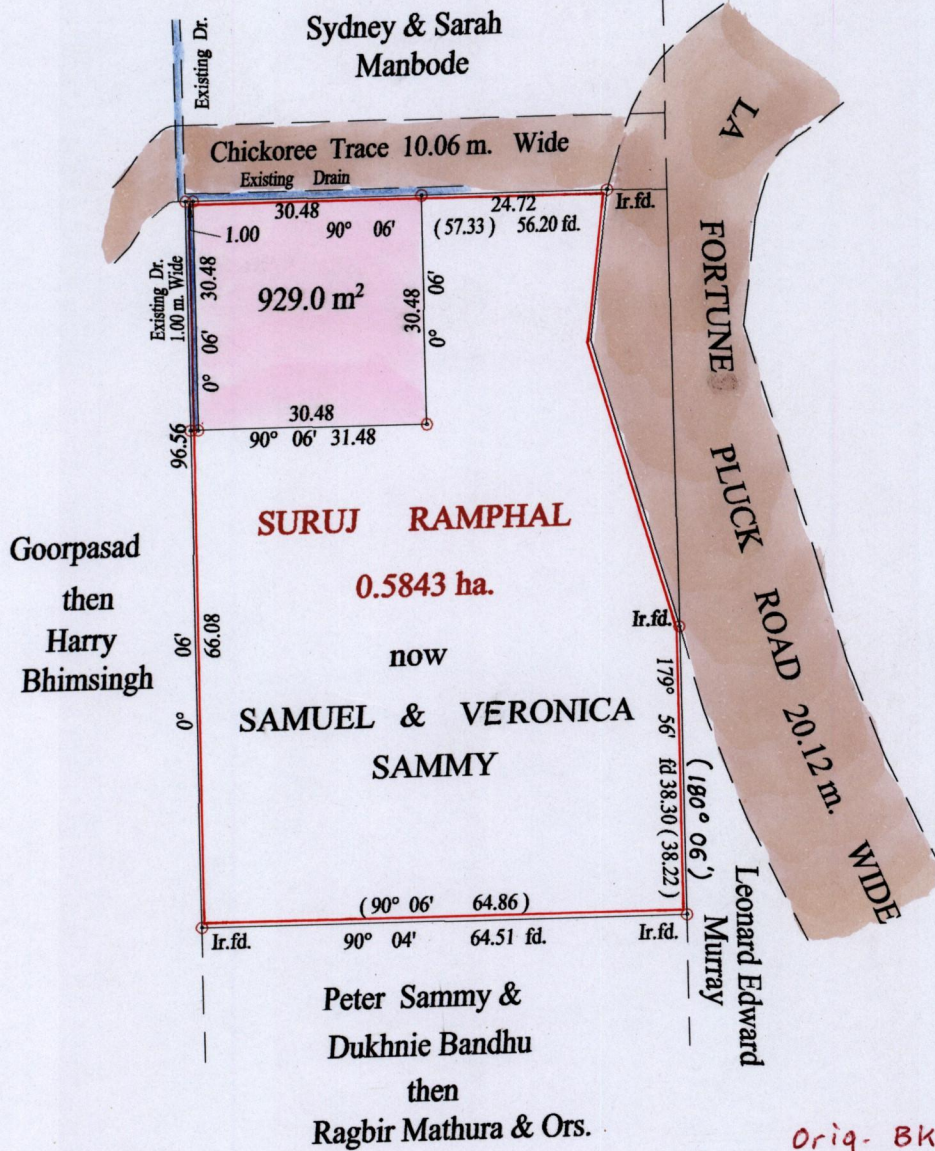


R.P.O. Vol. 85 Fol. 239  
 C.T. Vol. 988 Fol. 155  
 Vol. 5090 Fol 75

1332

Ward of Siparia  
 County of St Patrick  
 Cadastral Sheet ( G.12.G ) 63.E.  
 1/a

179



Orig- Bk. 818 : 112

Vide Bk. 818 fol. 112  
Vide Bk. 1128 fol. 160

Approved *[Signature]*  
 Director of Surveys  
 2007-03-12

○ Denotes Iron put except stated otherwise.

SCALE : 1:1000

Note: Bearings are cassini grid based on solar observations

Distances are in metres

PLAN of a Parcel of land coloured pink in the Ward of Siparia  
 Containing nine hundred and twenty nine point zero square metres  
 Surveyed by me, with due authority, in October 2005  
 In accordance with Regulation 25 (1) of the Land Surveyors' Regulations 1998,  
 I certify that this plan is correct.

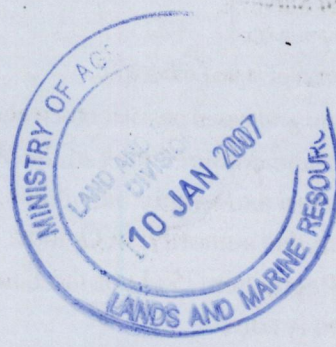
Checked by *[Signature]*

Entered on ..... Trinidad & Tobago Land Surveyor ..... 2007





Original Bk. 818: 112



1386/55  
1332/179