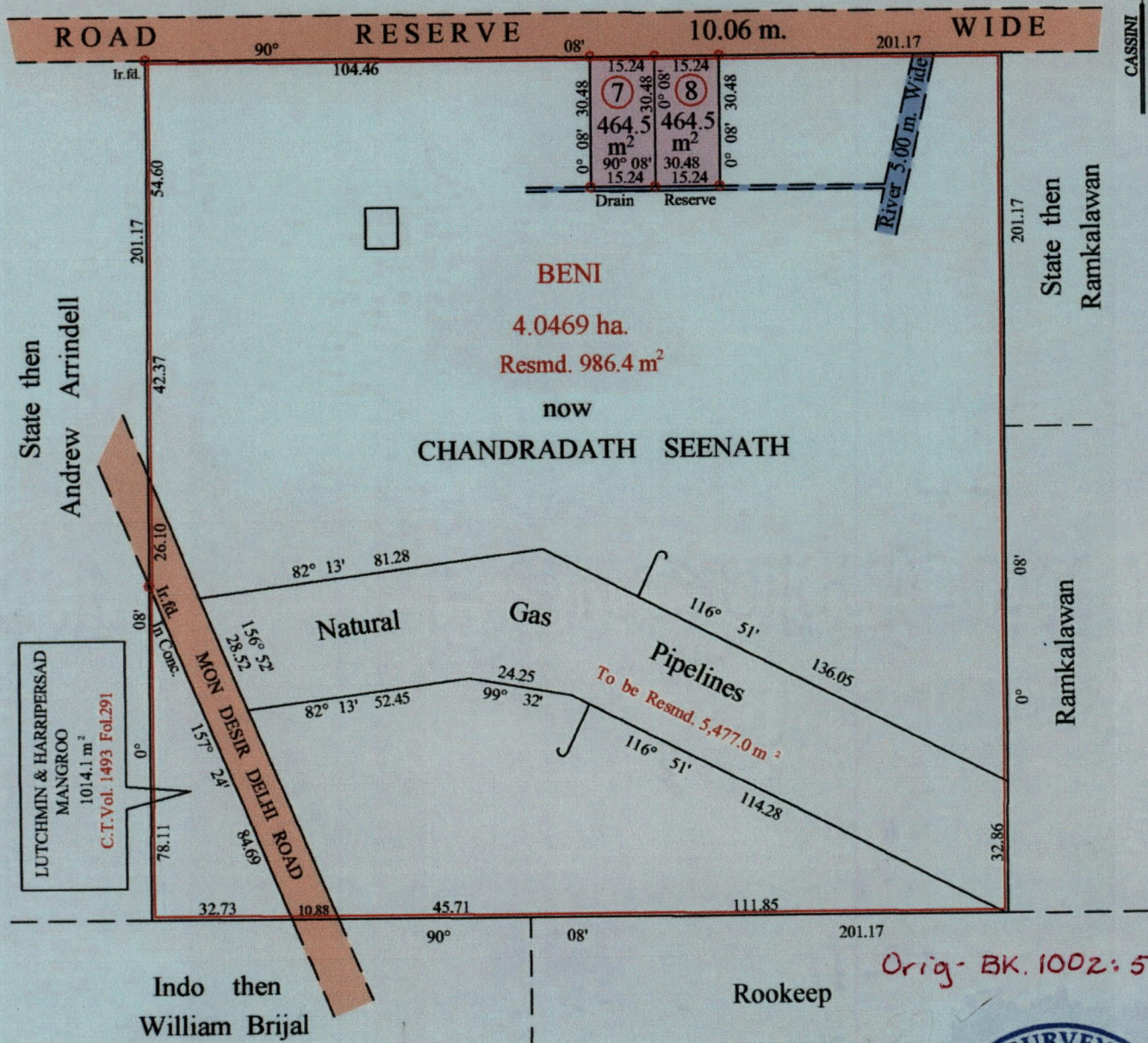


R.P.O. Vol. 56 Fol. 65  
C.T. Vol. 619 Fol. 587  
Vol. 5097 Fol. 15

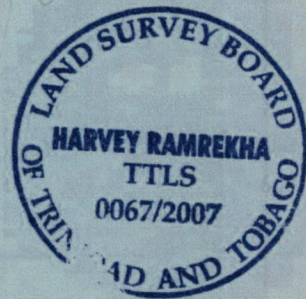
Ward of Siparia  
County of St. Patrick  
Cadastral Sheet ( G.11.C ) 62.F.  
2/b

G/N



Vide Bk.1002 fol.57

Vide Bk.963 fol.245



Approved *[Signature]*  
Director of Surveys

2007-9-14

◦ Denotes Iron put unless stated otherwise.

SCALE : 1:1500

Note: Bearings are cassini grid based on solar observations

Distances are in metres

PLAN of 2 Parcels of land coloured pink in the Ward of Siparia  
Containing together nine hundred and twenty nine point zero square metres  
Surveyed by me, with due authority, on the 31st. January 2000

In accordance with Regulation 25 (1) of the Land Surveyors' Regulations 1998,  
I certify that this plan is correct.

Checked by *[Signature]* 21/9/07

Entered on ..... Trinidad & Tobago Land Surveyor *[Signature]* ..... 2007

Faint header text at the top of the page, possibly including a title or address.

Main body of faint text, likely the primary content of the document, possibly a letter or report.

Second section of faint text, continuing the main body of the document.

Third section of faint text, possibly a concluding paragraph or a separate section.

Final section of faint text at the bottom of the page, possibly a signature or footer.

