

499  
TOP/LHN  
16LP

DP 33. 2006 (15/10)  
W. Doyle

499 16LP  
COT

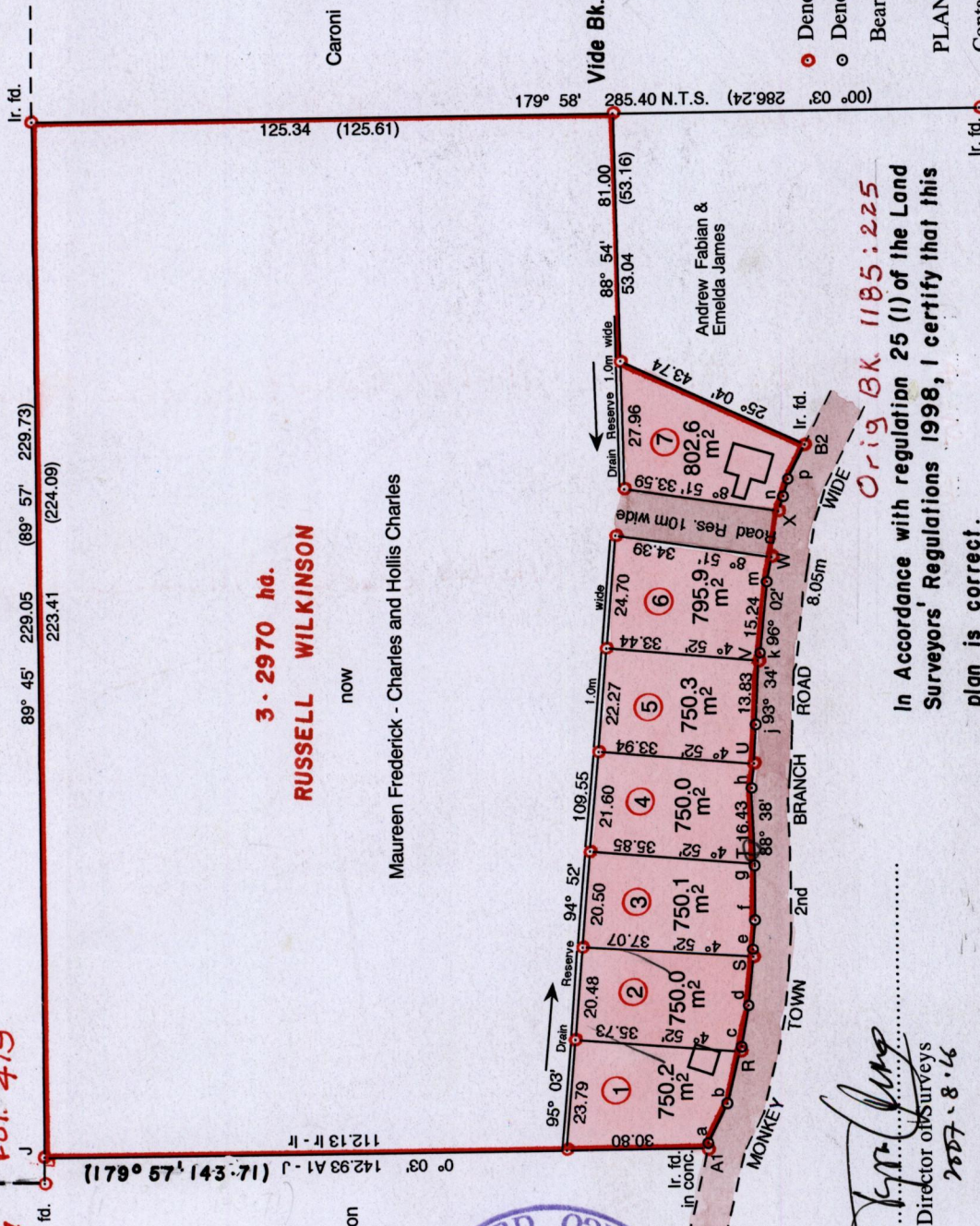
Cadastral Sheet G.5.J 54 E  
2/c

C.T. Vol. 3642. Fol. 399.  
Vol. 5137 Fol. 419

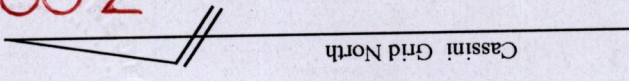
James Agnes

Ward of Ortoire

County of Victoria



1332



175

Caroni 1975 LTD.

Vide Bk. 1185/225.

SCALE 1 : 1500  
Distances are in metres

- Denotes Iron Put unless otherwise stated
- Denotes traverse station
- Bearings are Cassini Grid based on Solar Observations

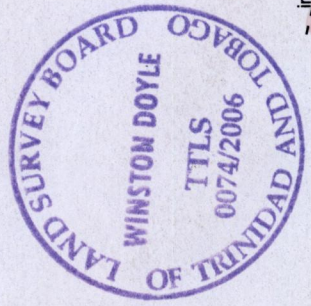
PLAN of 7 Parcels of land coloured pink in the Ward of Ortoire  
Containing together zero point five three four nine one hectares  
Surveyed by me, with due authority, in December 2005 for  
Maureen Frederick - Charles and Hollis Charles

In Accordance with regulation 25 (1) of the Land Surveyors' Regulations 1998,  
I certify that this plan is correct

3-2970 hd.  
RUSSELL WILKINSON  
now

Maureen Frederick - Charles and Hollis Charles

Williams Gibson



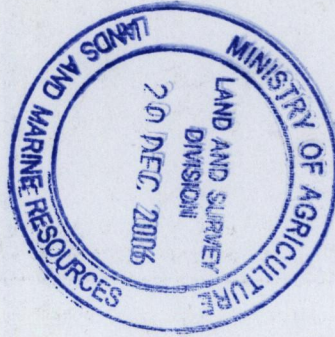
Orig Bk 1185:225  
In Accordance with regulation 25 (1) of the Land  
Surveyors' Regulations 1998, I certify that this  
plan is correct.

Approved .....  
Director of Surveys  
2007-8-16

Checked by .....  
20/6/07

Entered on ..... 2006





Lot No	Volume & C. T.	NAMES
1		
2		
3		
5	Vol. 5137 Fol. 429.	Hollis Charles & Maureen Frederick-Charles.
4.		
6		
7.	Vol. 5137 fol. 431.	Hollis Charles & Maureen Frederick Charles.