

1332

166

R.P.O. Vol. 132 Fol. 65

Cadastral Sheet 74B, G.20.F.
2/c

C.T. Vol. 1817 Fol. 447 REMAINING PORTION

Ward of Moruga

Vol. 4899 Fol. 281

County of Victoria

U.P.I.N. No.

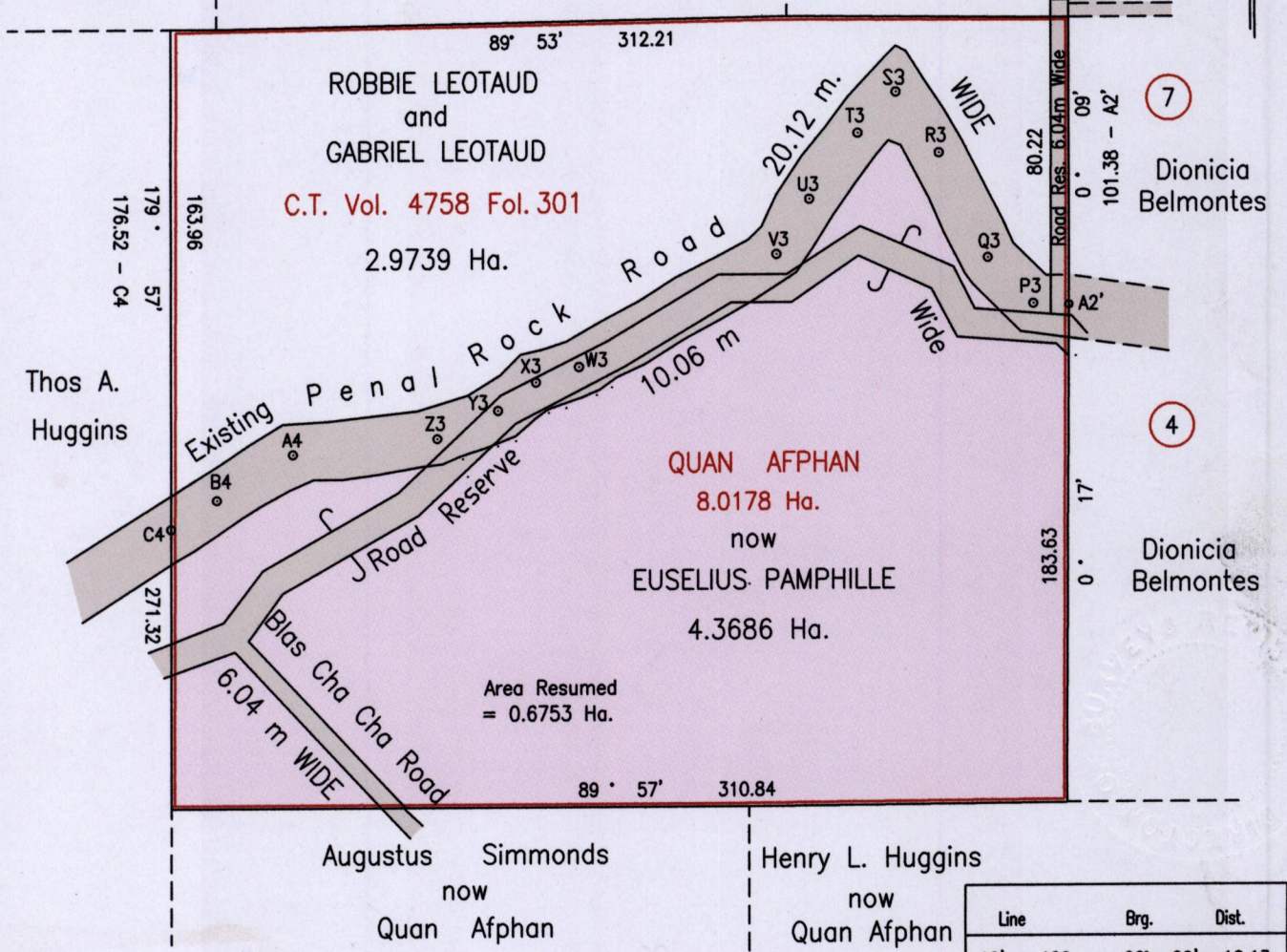
Vide Plan B.A. 23
Bk. 347 / 4
S.O. 327/10

Joseph Henry
now
Emmanuel
Missit

Majin Castillo
now
Soterio Leotaud
Limited
R.P.O. Vol. 164 Fol. 181

Mariano Hospedales
now
Rita Vialera &
Frank Bernard Vialera
C.T. Vol. 950 Fol. 381

Grid North
Cassini



Approved
Director of Surveys
2006.12.18

Orig Bk. 347: 4
See BA 23

Line	Brg.	Dist.
A2' - A20	00° 09'	10.13
E - B2	90° 34'	6.02
A2' - P3	276° 45'	12.36
P3 - Q3	314° 00'	21.52
Q3 - R3	334° 44'	41.74
R3 - S3	324° 50'	25.50
S3 - T3	223° 39'	19.66
T3 - U3	216° 14'	28.26
U3 - V3	210° 11'	22.13
V3 - W3	240° 12'	78.76
W3 - X3	251° 10'	16.29
X3 - Y3	232° 33'	16.09
Y3 - Z3	246° 24'	23.59
Z3 - A4	263° 10'	50.69
A4 - B4	239° 56'	30.60
B4 - C4	232° 49'	19.03

SCALE 1:2500
Distances are in Metres

Bearings are Cassini Grid based on Solar Obs.
To obtain compass bearings add 7 minutes

This is a true copy of a diagram of eight point zero one seven eight hectares originally transferred to Quan Afphan showing a portion coloured pink and containing four point three six eight six hectares being the remainder after one previous transfer and one resumption of other portions of the land.

In accordance with Regulation 25(1) of the Land Surveyors' Regulations 1998, I certify that this plan is correct.

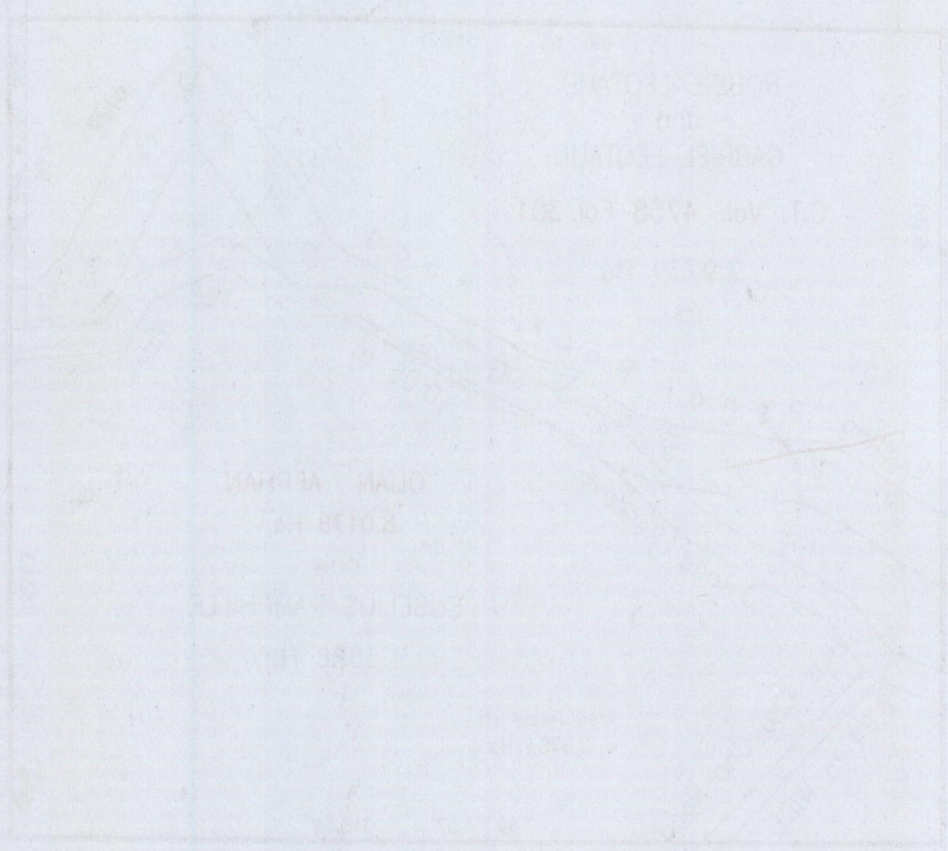
Checked by 12/12/06

Entered on

Trinidad & Tobago Land Surveyor 7th December 2006



Original Bl. 347:4



GLAN ALPHAN

2012 ft

1880 ft

1750 ft

1620 ft

1490 ft

1360 ft

1230 ft

1100 ft

970 ft

840 ft

710 ft

580 ft

450 ft

320 ft

190 ft

60 ft

30 ft

0 ft

30 ft

60 ft

90 ft

120 ft

150 ft

180 ft

210 ft

240 ft

270 ft

300 ft

330 ft

360 ft

390 ft

420 ft

450 ft

480 ft

510 ft

540 ft

570 ft

1375/205