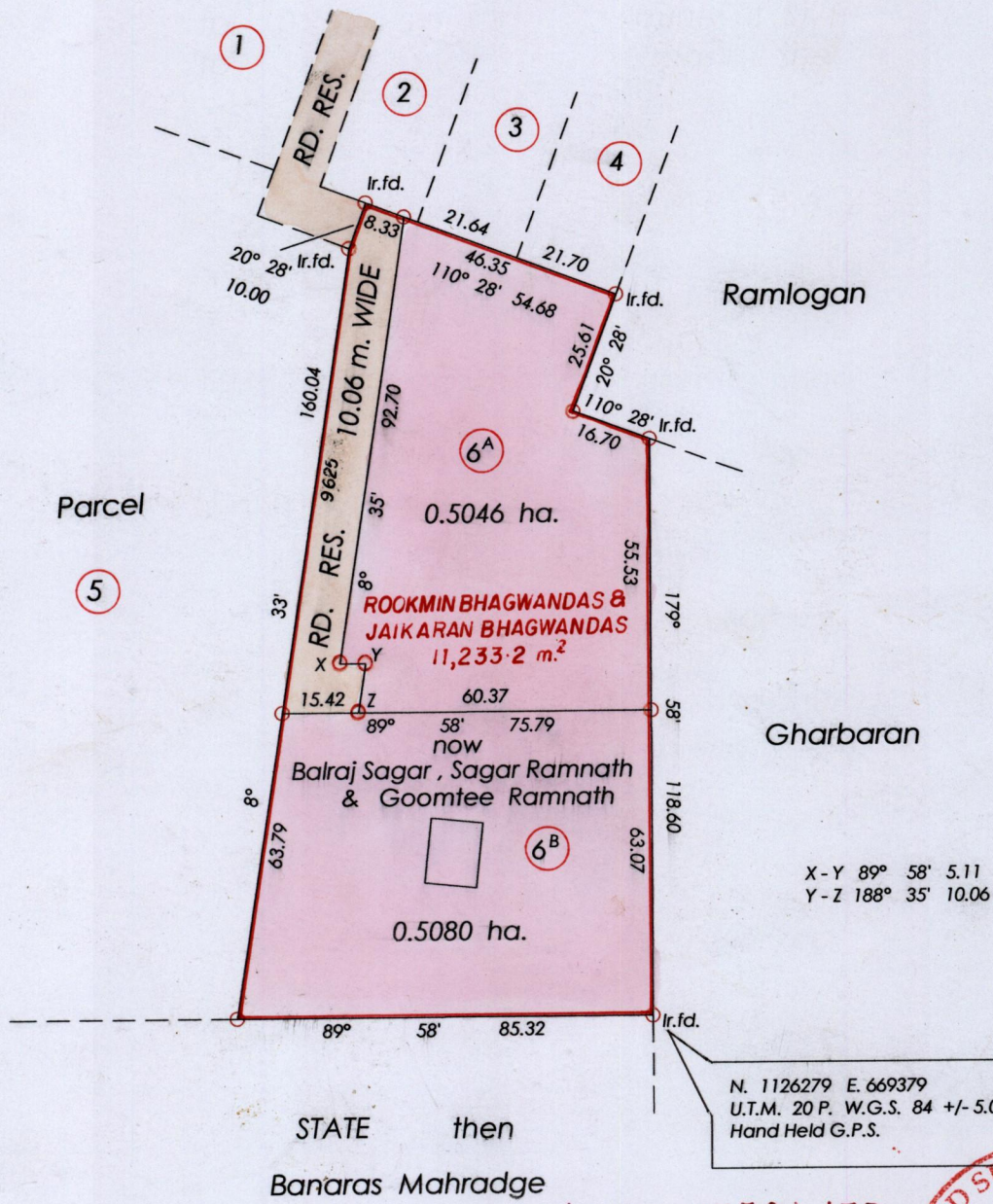


R.P.O. Vol. fol.
C.T. Vol. 3057 fol. 95

Ward of Siparia
County of St. Patrick
Cadastral Sheet (G.13. B & F.) $\frac{63 F}{1/a \& 1/c}$

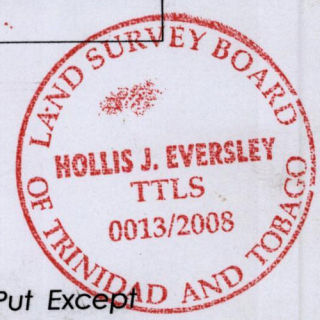
Bk. 1157 fol.178
Bk. 1236 fol. 52
Vol. 5138 Fol. 351.

1427/218



STATE then
Banaras Mahradge

Orig Bk. 1157 fol. 178



Approved *[Signature]*
Director of Surveys
2009.2.19

○ Denotes Iron Put Except
Otherwise Stated

SCALE: 1: 1500

Note: Bearings are cassini grid based on solar observations Distances are in metres
PLAN of 2 Parcels of land coloured pink in the Ward of Siparia
Containing together one point zero one two six hectares
Surveyed by me, with due authority, in Feb. 2008
In accordance with Regulation 25 (1) of the Land Surveyors' Regulations 1998,
I certify that this plan is correct.

Checked by R- 17/02/09

[Signature]
23rd February 2008

Entered on Trinidad & Tobago Land Surveyor 2008

Lot No.	CT. & Volume	NAMES
6A	5138 Fol. 357	Sagar Ramnath & Goontee Ramnath.
6B.	5138 Fol. 359	Balraj Sagar.



1427/218