

No 10425

R.P.O. Vol. 122

C.T. Vol.

Vol. 4987 Fol. 229

Fol. 415

Fol.

(B)

S. Bissram

(A)

S. Bissram

Ward of Tamana.

County of St. Andrew.

Cadastral Sheet E. I. N.

P. Charles

(B) S. Bissram

(C) 20,050.4 S.M.

(D) 24,293.6 S.M.

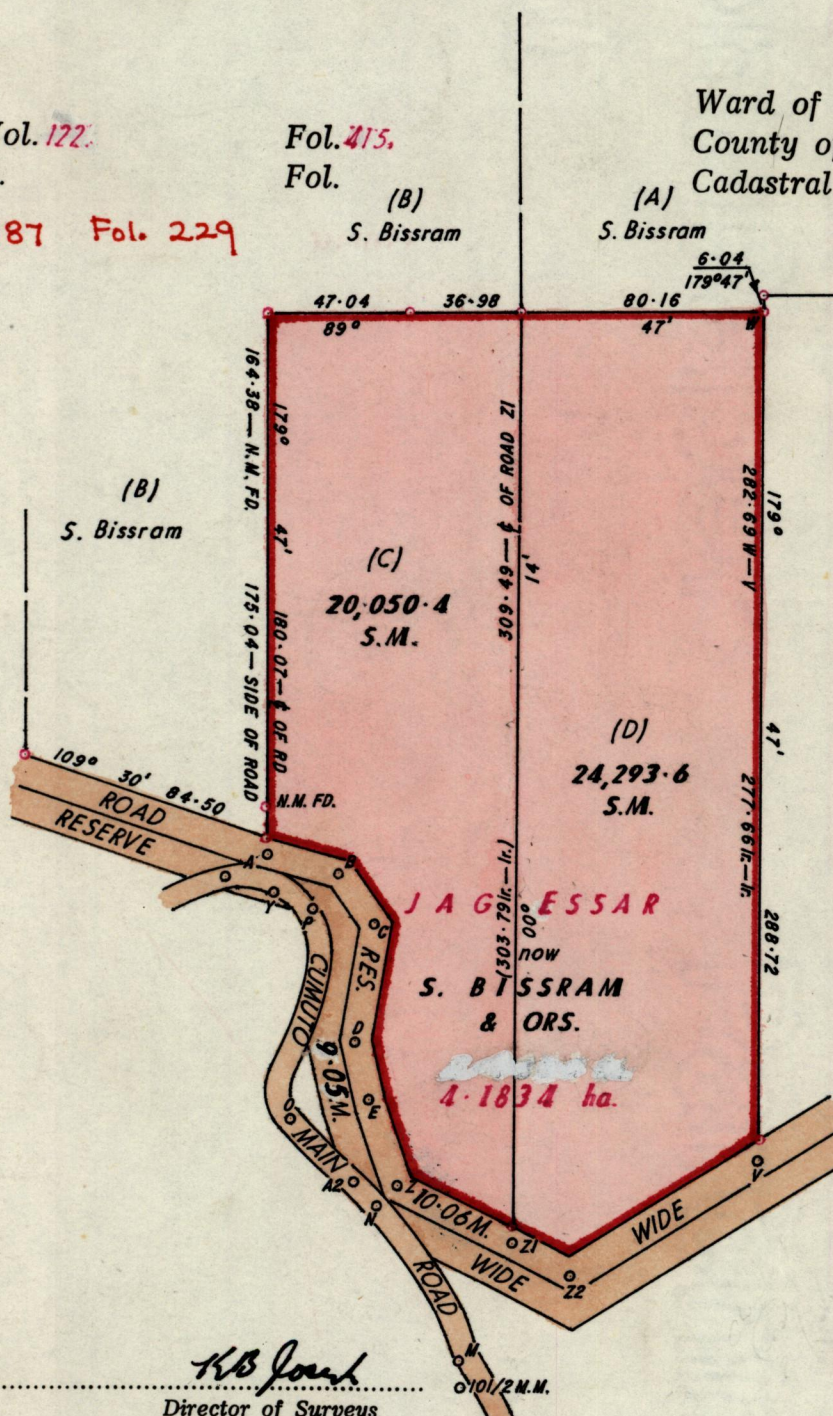
JAGRESSAR

S. BISSRAM & ORS.

1.1834 ha.

Rampersad

Cassini G.N



ROAD STATIONS

A — B	104° 45' 24.14
B — C	144° 35' 20.12
C — D	188° 45' 40.24
D — E	167° 20' 20.12
E — Z	159° 41' 29.78
Z — Z1	116° 30' 43.00
Z1 — Z2	118° 15' 22.13
Z2 — V	59° 11' 73.36
A2 — Z	90° 47' 14.65
M — N	332° 14' 58.59
N — A2	315° 14' 10.66
A2 — O	315° 14' 31.55
O — P	04° 47' 70.12
P — Y	289° 53' 13.78

Orig Bk 16:52

Approved

*KB Joubert*  
Director of Surveys  
8.5.5.23

SCALE 1:2500.

minutes

Distances are in metres.

o Denotes Iron put except otherwise stated.

Note: To obtain compass bearings add/subtract

PLAN of 2 Parcels of land coloured pink in the Ward of Tamana.

Containing four point four three four four hectares.

Surveyed by me, with due authority, in August 1981.

I certify that I have complied with rule 76 under section 14(2)(d) of the Land Surveyors' Ordinance 1952, and that this plan is correct.

Checked by *HS* 85/05/23

*Winton Ramnara*

Entered .....

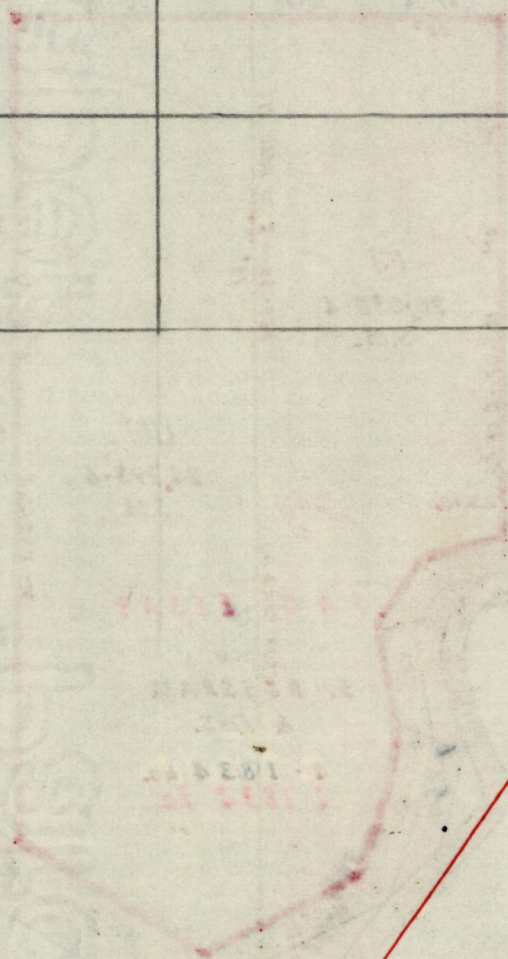
Land Surveyor, Trinidad 6<sup>th</sup> February 1984



Original Survey BK 16:52

18 59  
Mathura Singh, Janet Sookdeo  
& Ors.

Lot No.	Vol.	NAME
C		
D		



1332/155  
11/25/57