

R.P.O. Vol. 169 Fol. 587

Ward of Siparia

C.T. Vol. 3747 Fol. 57

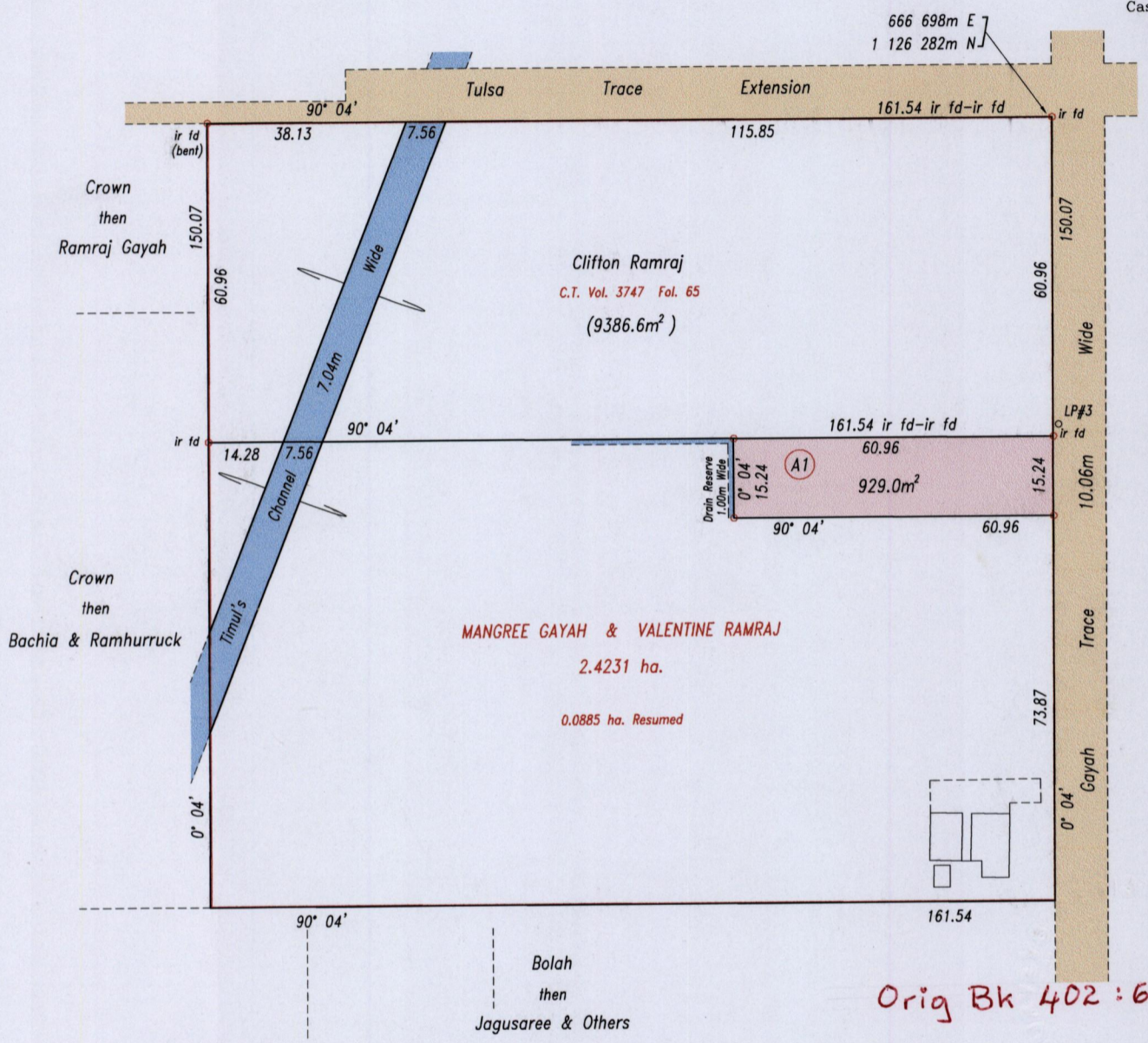
County of St. Patrick

U.P.I.N. No.:

Cadastral Sheet G.12.H. 63E  
2/a, 2/c

Vol. 5138 Fol. 261

G.N. Cassini



Orig Bk 402:65

Source: GPS (Hand Held)  
Error Statement: +/- 5m  
Datum: Naparima, UTM (Zone 20).

Approved  
*Lynn Roopchand*  
Director of Surveys  
2008.9.15

Reference: Bk.402 Fol.65  
Bk.1227 Fol.26

SCALE 1: 1250

Distances are in metres  
o Denotes iron put except otherwise stated

Bearings are Cassini Grid based on Solar Observations

PLAN of a parcel of land coloured pink in the Ward of Siparia  
Containing nine hundred and twenty nine point zero square metres  
Surveyed by me, with due authority, in November 2007

In accordance with Regulation 25(1) of the Land Surveyors' Regulations 1998, I certify that this plan is correct.

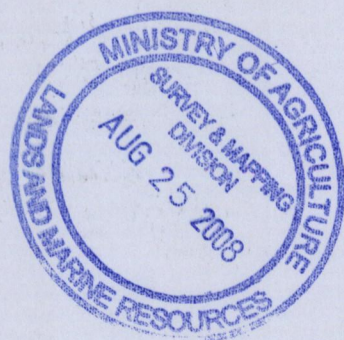
Checked by *Helen 7/9/08*  
Entered .....

*L.A. Ripplend*  
Trinidad & Tobago Land Surveyor 5/8/2008



Original Bl. 1227: 26

Lot. A1. Hansraj Bhadase



1427/34