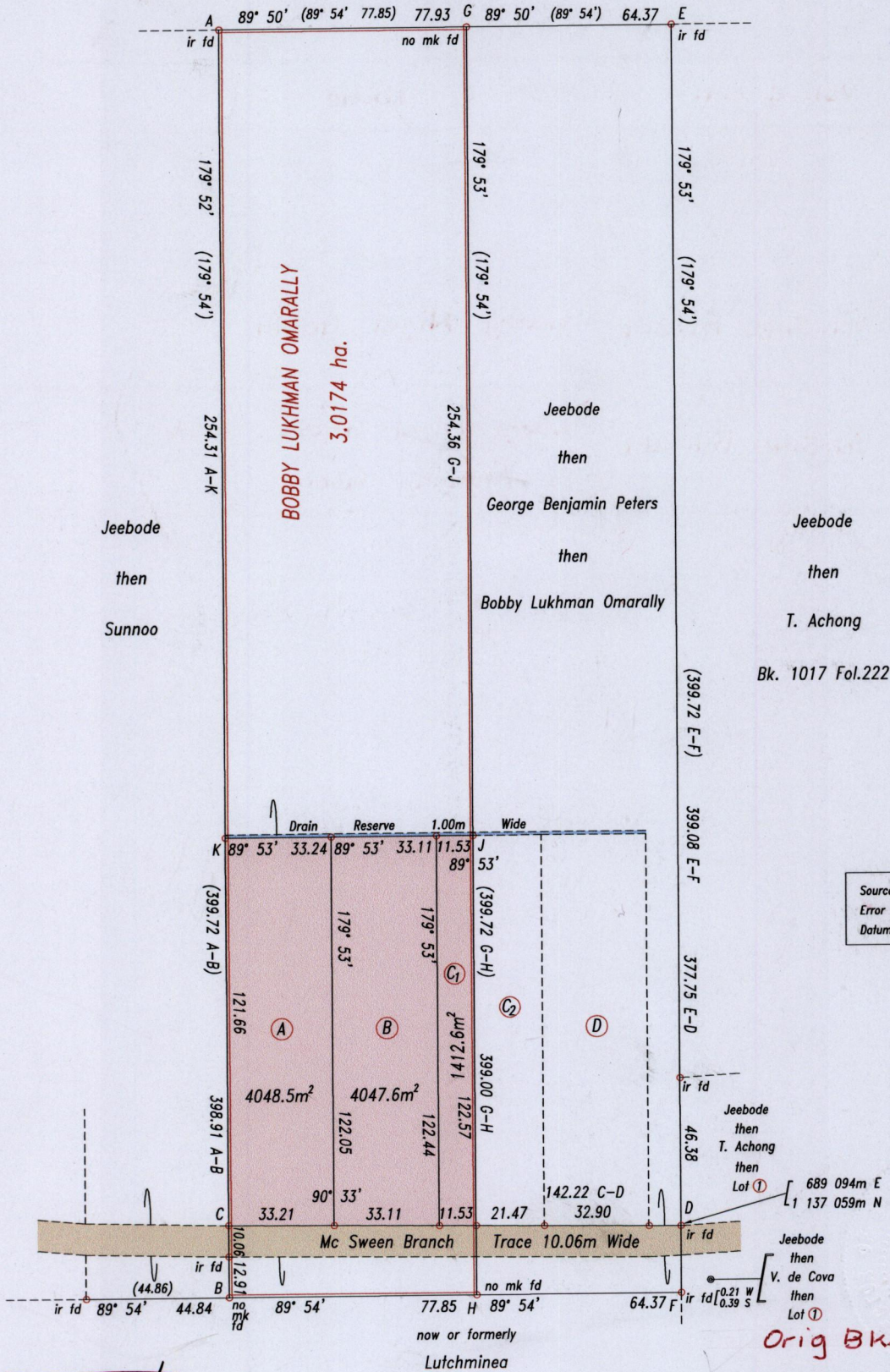


R.P.O. Vol. 7 Fol. 495
C.T. Vol. 4905 Fol. 51
Vol. 5140 Fol. 273
U.P.I.N. No.:

Cadastral Sheet H.1.E. 54F
County of Victoria 2/a, 2/c
Ward of Ortoire

Crown
then
Ramchurrun



Source: GPS (Hand Held)
Error Statement: +/- 5m
Datum: Naparima, UTM (Zone 20).

Approved
Lynn Roopchand
Director of Surveys
2809-1-28

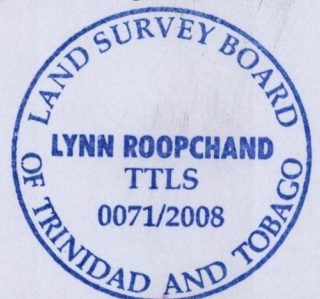
NOTE
Parcel C₁ and Parcel C₂ are to be amalgamated

SCALE 1: 2000
Distances are in metres
○ Denotes iron put except otherwise stated
Bearings are Cassini Grid based on Solar Observations

PLAN of 3 parcels of land coloured pink in the Ward of Ortoire
Containing together nine thousand five hundred and eight point seven square metres
Surveyed by me, with due authority, in August & September 2008

In accordance with Regulation 25(1) of the Land Surveyors' Regulations 1998, I certify that this plan is correct.

Checked by *Hedy 22/11/09*
Entered
L.A. Roopchand
Trinidad & Tobago Land Surveyor 16/12/2008



Lot No.	Vol. & C.T.	NAME
A		
B	Vol. 5140 Fol. 301	Larry Nigel Gobin
C1	Vol. 5140 Fol. 281	Larry Nigel Gobin and Anthony Gobin

