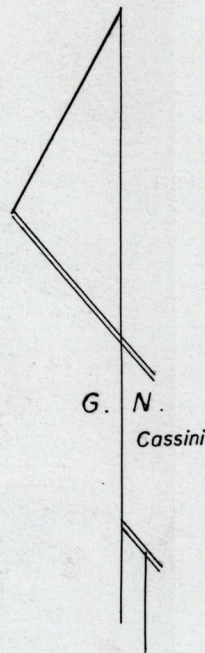
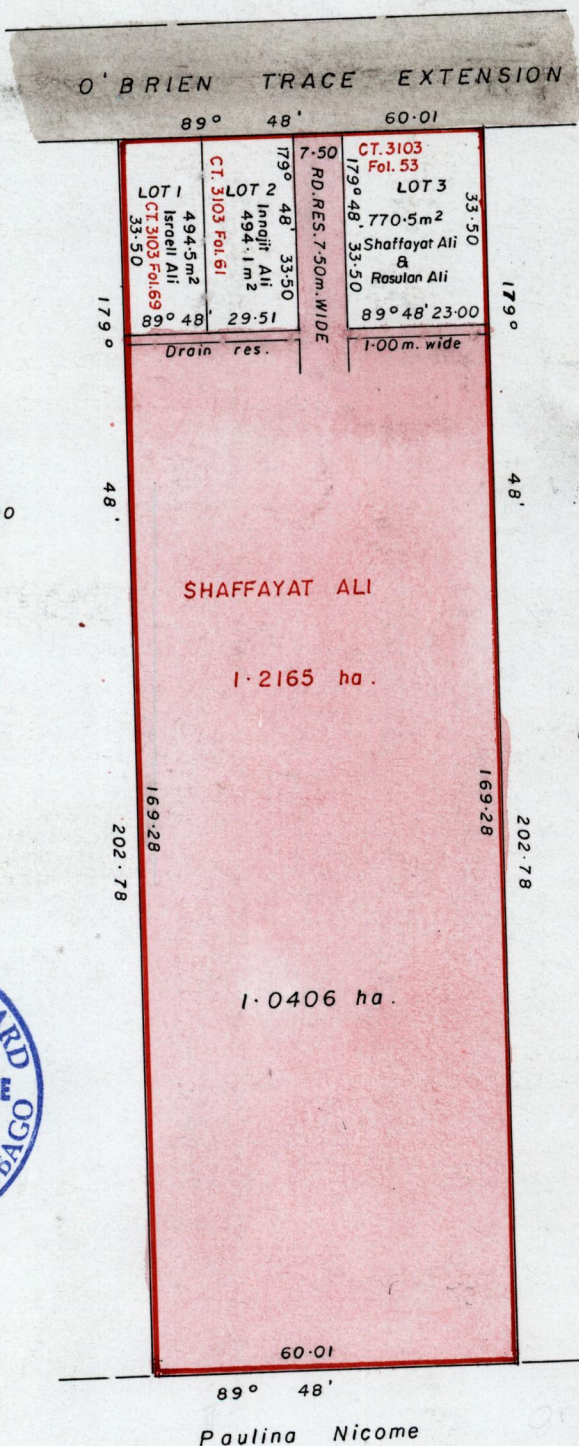


1332

R.P.O. Vol. 165 Fol. 601  
C.T. Vol. 2631 Fol. 305  
U.P.R.N. No.  
Vol. 5107 Fol. 165

Ward of Turure  
County of St. Andrew  
Cadastral Sheet E. 12.1. 45C  
1/d.



Approved by

*[Signature]*  
 Director of Surveys  
 2008-11-27

Paulina Nicome

Orig. Bk. 1211:210

cf. L & S. Bk. 1163 Fol. 33

SCALE:- 1/1250

Distances are in metres

Bearings are based on Solar Observations.  
Note: To obtain compass bearings add/ subtract minutes

This is a true copy of a diagram of one point two one six five hectares originally granted to Shaffayat Ali shewing a portion coloured pink and containing one point zero four zero six hectares being the remainder after three (3) previous transfers of other portions of land

In accordance with Regulation 25 (1) of the Land Surveyors' Regulations 1998, I certify that this plan is correct.

Checked by *[Signature]*

*[Signature]*  
 21st JANUARY 2003  
 49  
 Trinidad & Tobago Land Surveyor

Entered on.....



~~Original Bl. 1163 Fol. 33~~

Original Survey BK. 1211 fol. 210

-2 OCT 2003  
Lands and  
Surveys  
Division

1279/212