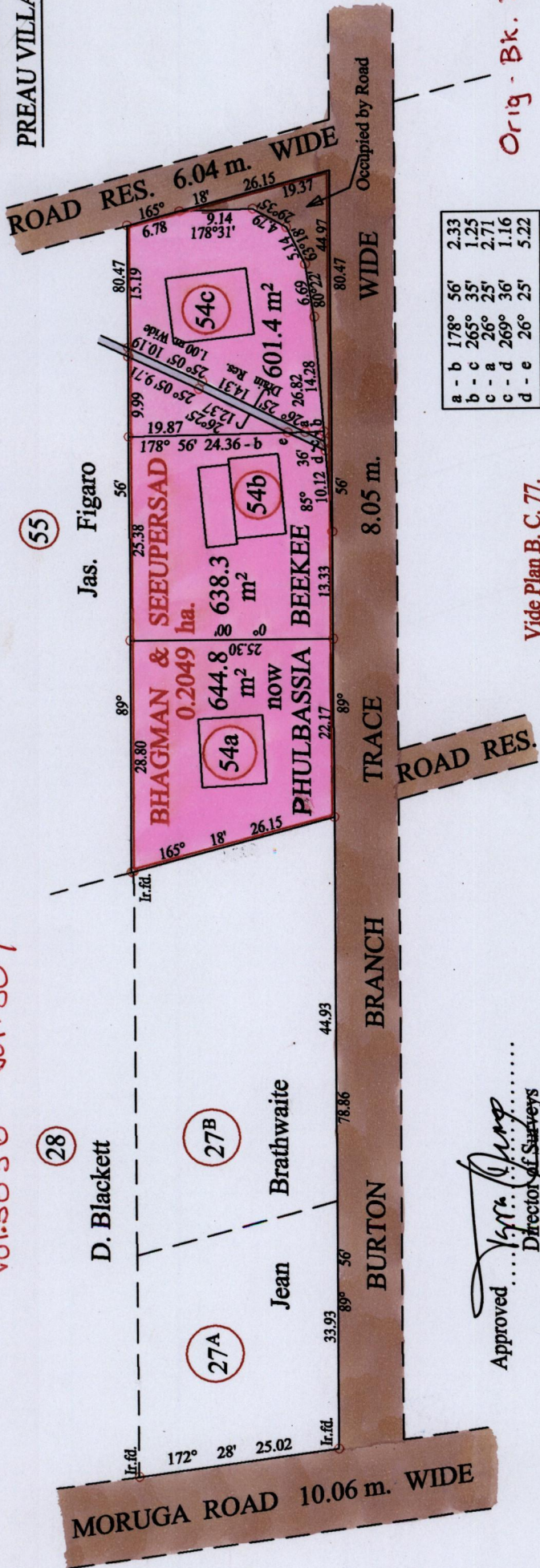
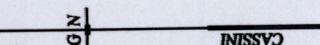


Ward of Ortoire
County of Victoria
Cadastral Sheet (G 10 N) 64.B
4/d
PREAU VILLAGE

R.P.O. Vol. 447 Fol 213
C.T. Vol. 1856 Fol 203
Vol. 5056 fol. 507



Orig - Bk. 388: 328



Vide Plan B. C. 77.

SCALE : 1:750

Distances are in metres

Note: Bearings are cassini grid based on solar observations
PLAN of 3 Parcels of land coloured pink in the Ward of Ortoire
Containing together one thousand eight hundred and eighty four point five square metres
Surveyed by me, with due authority, in November 2006
In accordance with Regulation 25 (1) of the Land Surveyors' Regulations 1998,
I certify that this plan is correct.

Approved: *[Signature]*
Director of Surveys
2008.1.3

○ Denotes Iron put except stated otherwise.

Checked by *[Signature]* 2008.2.21/2007

Entered on Trinidad & Tobago Land Surveyor 2008.08.2007

Lot No.	Ct. Volume & Folio	Names
Lot 54a	Vol. 5056 fol. 531	Devanand Doris & Ramnarine Beekee
Lot 54b	Vol. 5056 fol. 513	Asha Beekee
Lot 54c	Vol. 5056 fol. 523	Mahase Pamela & Yavid Bickhi



03040 per
DAPRIBUJIA & MAMODANU
BHVQAVN 3 ZFEBBER2AD

