

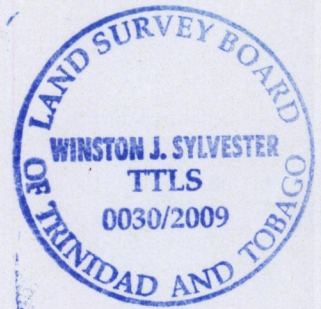
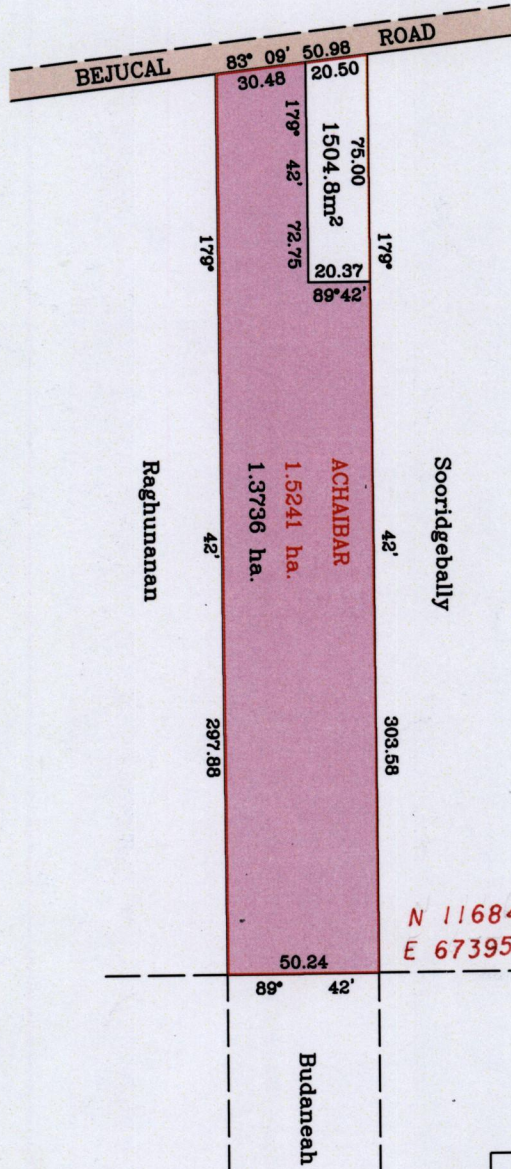
REMAINING PORTION

R.P.O. Vol. 39 Fol. 299  
C.T. Vol. 1129 Fol. 327  
Vol. 5131 Fol. 489

Cadastral Sheet D.3.A.  $\frac{23F}{4/b}$   
Ward of Cunupia  
County of Caroni

Vide L&S Bk.881 Fol.76

G N  
U.T.M.



Orig. Bk. 881 fol. 76

Roopnarine Ragoonanan & Bissoondal Ragoonanan C.T. Vol. 3016 Fol. 346
--------------------------------------------------------------------------------

Approved.....  
  
 Director of Surveys  
 K.S. Rao

SCALE 1/2500  
Distances are in metres.

To obtain compass bearings subtract 18 minutes

This is a true copy of a diagram of one point five two four one hectares originally transferred to ACHIBAR shewing a portion coloured pink and containing one point three seven three six hectares being the remainder after one previous transfer of another portion of the land, the dividing lines having been run, in accordance with Regulation 25 (1) of the Land Surveyors' Regulations 1998, I certify that this plan is correct.

Checked by.....  
  
 .....  
 Entered on .....

Original Bh. 881 : 76



1500/50