

Vol. 4661
 R.P.O. Vol. 81
 C.T. Vol. 1010
 U.P.R.N.

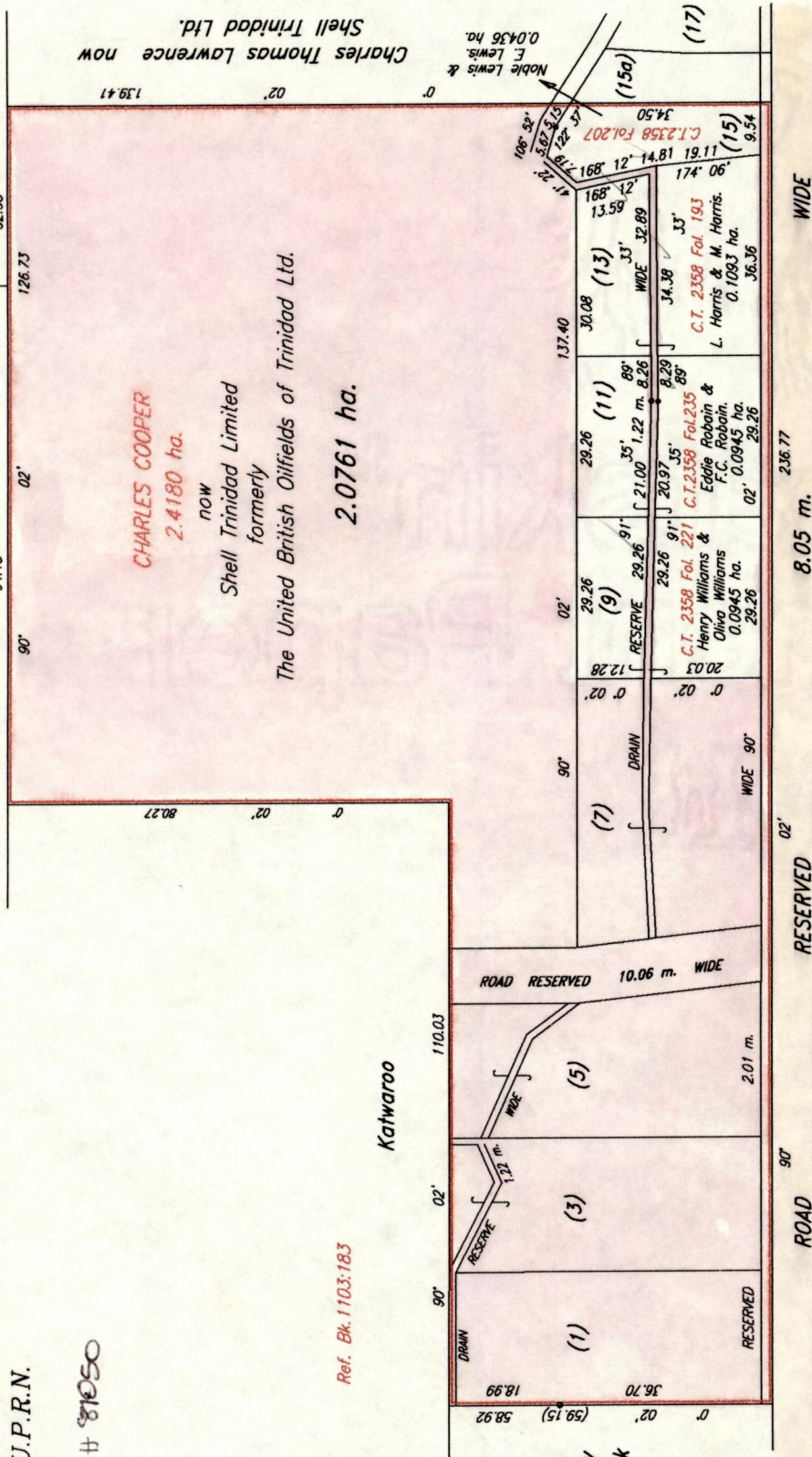
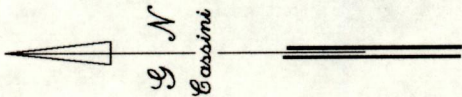
REMAINING PORTION

Boodheea

T. Price

Ward of Siparia
 County of St. Patrick
 Cadastral Sheet G.13.F. 63F
 1/c

Process JDH 81050



Ref. Bk. 1103:183

Katwaroo

ROAD RESERVED 10.06 m. WIDE

ROAD 90' RESERVED 02' 8.05 m. WIDE 236.77

Approved

Wynne Geng
 Director of Surveys 1207-45

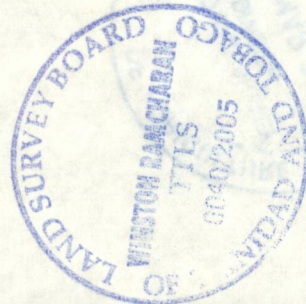
SCALE 1 :- 1250

Note: To obtain compass bearings subtract 02 minutes
 This is a true copy of a diagram of two point four one eight zero hectares originally coloured pink and containing two point zero seven six one hectares being the remainder after four previous transfers of another portion of land.
 CHARLES COOPER shewing a portion
 In accordance with Regulation 25 (1) of the Land Surveyors' Regulations 1998, I certify that this plan is correct

T.T.L.S.

Winston Ramcharan
 Trinidad and Tobago Land Surveyor

Entered..... 3rd February 2005



Shell Trinidad Ltd