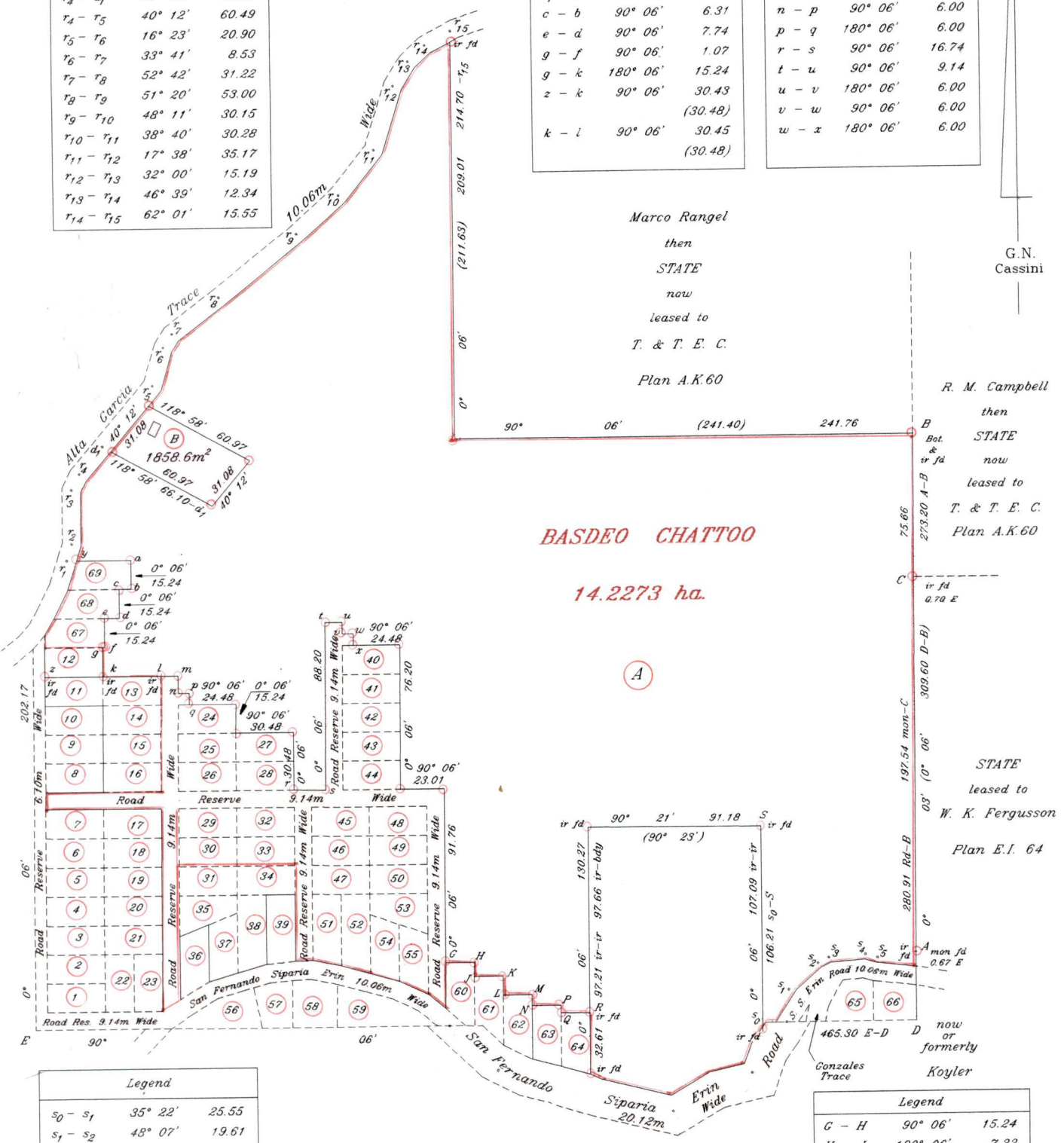


Vol 4867 Fol 229

Legend		
Centre line of Alta Garcia Trace 10.06m Wide		
r ₁ - r ₂	17° 51'	9.23
r ₂ - r ₃	0° 00'	28.61
r ₃ - r ₄	27° 13'	9.27
r ₄ - r ₄	40° 12'	18.96
r ₄ - r ₅	40° 12'	60.49
r ₅ - r ₆	16° 23'	20.90
r ₆ - r ₇	33° 41'	8.53
r ₇ - r ₈	52° 42'	31.22
r ₈ - r ₉	51° 20'	53.00
r ₉ - r ₁₀	48° 11'	30.15
r ₁₀ - r ₁₁	38° 40'	30.28
r ₁₁ - r ₁₂	17° 38'	35.17
r ₁₂ - r ₁₃	32° 00'	15.19
r ₁₃ - r ₁₄	46° 39'	12.34
r ₁₄ - r ₁₅	62° 01'	15.55

Legend		
r ₁ - y	90° 06'	5.28
r ₁ - a	90° 06'	33.93
c - b	90° 06'	6.31
e - d	90° 06'	7.74
g - f	90° 06'	1.07
g - k	180° 06'	15.24
z - k	90° 06'	30.43
		(30.48)
k - l	90° 06'	30.45
		(30.48)

Legend		
l - m	90° 06'	9.14
m - n	180° 06'	9.24
n - p	90° 06'	6.00
p - q	180° 06'	6.00
r - s	90° 06'	16.74
t - u	90° 06'	9.14
u - v	180° 06'	6.00
v - w	90° 06'	6.00
w - x	180° 06'	6.00



Legend		
s ₀ - s ₁	35° 22'	25.55
s ₁ - s ₂	48° 07'	19.61
s ₂ - s ₃	62° 26'	6.33
s ₃ - s ₄	85° 41'	19.65
s ₄ - s ₅	105° 43'	6.63
s ₅ - A	83° 05'	20.43

Ramesh Shanti & Devanan

References: Bk. 456 Fol. 211
 Bk. 489 Fol. 81
 Bk. 725 Fol. 169
 Bk. 725 Fol. 161, 162
 Bk. 753 Fol. 334
 Plan C.A. 186

Legend		
G - H	90° 06'	15.24
H - J	180° 06'	7.32
J - K	90° 06'	15.24
K - L	180° 06'	10.06
L - M	90° 06'	15.24
M - N	180° 06'	5.79
N - P	90° 06'	15.24
P - Q	180° 06'	3.96
Q - R	90° 06'	15.24

Approved

 Director of Surveys 5.4.2008

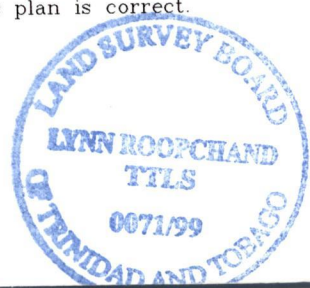
SCALE 1: 3000
 Distances are in metres
 ○ Denotes iron put except otherwise stated

See Reverse for Notes

Bearings are Cassini Grid based on Solar Observations
 PLAN of a parcel of land coloured pink in the Ward of Siparia
 Containing eighteen hundred and fifty eight point six square metres
 Surveyed by me, with due authority, in October & November 1998 & January 1999
 In accordance with Rule 25(1) of the Land Surveyors' Regulations 1998, I certify that this plan is correct.

Checked by
 Entered

Trinidad & Tobago Land Surveyor 2/7/1999



Original Plan G.A. 186

