

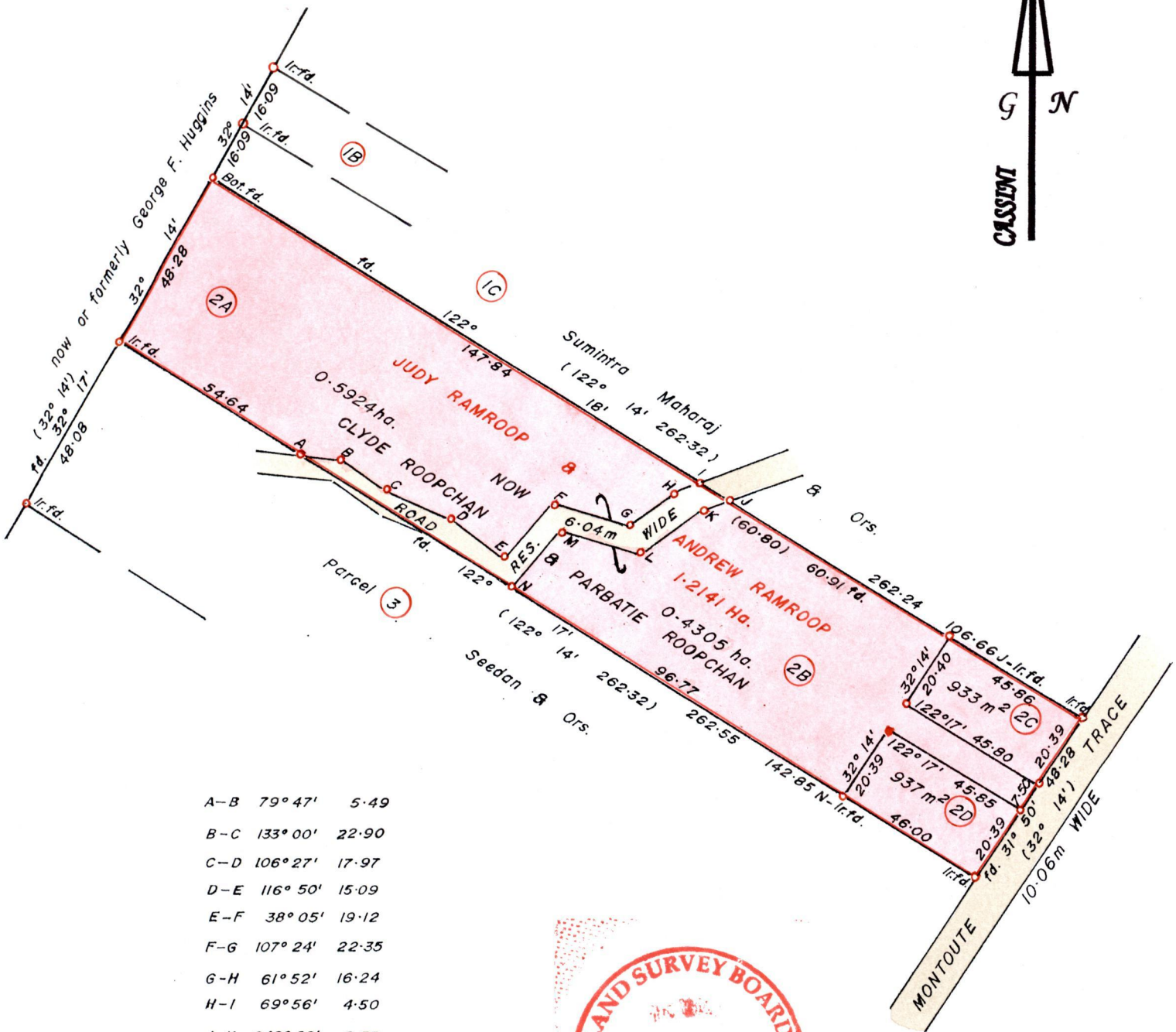
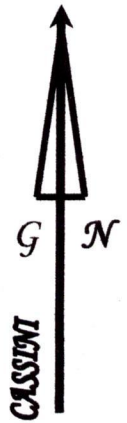
R.P.O Vol. 109 Fol. 405
C.T. Vol. 4816 Fol. 511

Ward of Siparia.
County of St. Patrick.
Cadastral Sheet G.12.H. 63E

Vol. 5029 Fol. 447

4/b

Process Id # 81037



A-B	79° 47'	5.49
B-C	133° 00'	22.90
C-D	106° 27'	17.97
D-E	116° 50'	15.09
E-F	38° 05'	19.12
F-G	107° 24'	22.35
G-H	61° 52'	16.24
H-I	69° 56'	4.50
J-K	249° 56'	6.53
K-L	241° 52'	18.98
L-M	287° 24'	21.00
M-N	218° 05'	21.35



Approved: *[Signature]*
Director of Surveys.
2008.5.2

Bk. 1012 : 160.
SCALE 1 : 1500.

Distances are in METRES
Denotes Iron Put except otherwise stated
Bearings are Cassini Grid based on Solar Observations.

**PLAN of 4 Parcels of land coloured in PINK in the Ward of Siparia.
Containing together one point two zero nine nine hectare.
Surveyed by me, with due authority, in November 2006.
In accordance with Reg. 25(1) of the Land Surveyors' Regulations 1998,
I certify that this plan is correct.**

Checked by *[Signature]* 30/4/08

[Signature]
25/4/08

Entered Trinidad and Tobago Land Surveyor 2007.

Original Survey BK. 1012 Fol. 160

Lot 2A → Vol 5029 fol. 451 Clyde Roopchan & Parbatie Roopchan^A

Lot 2B → Vol 5029 fol 457 Clyde Roopchan & Parbatie Roopchan.

Lot 2C → Vol 5029 fol. 464 Yagadaye & Aimraj Laloon^{Laloon}

Lot 2D → Vol. 5029 fol. 463 CLYDE & PARBATIE ROOPCHAN.



14/4/09