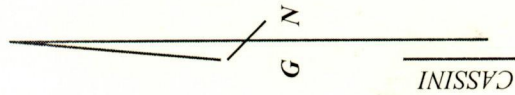
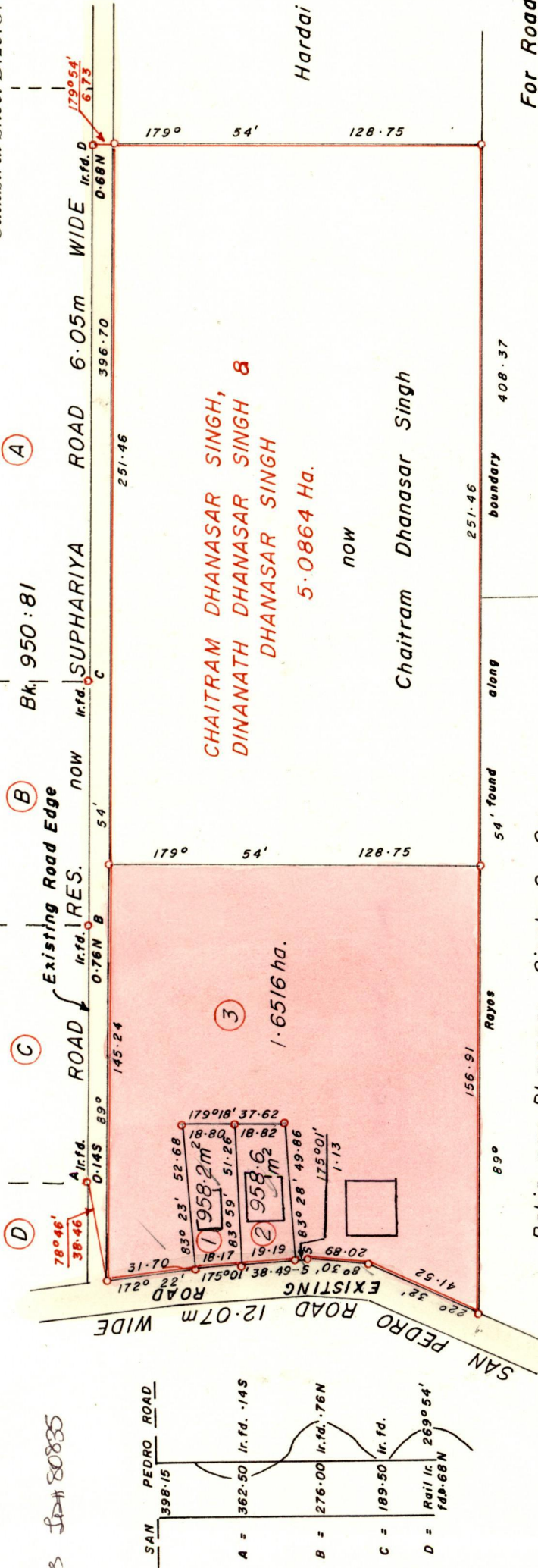


C.T. Vol. 3412
R.P.O. Vol. 257
C.T. Vol. 4227

Fol. 63
Fol. 89
Fol. 507

Process No. 80885

Ward of Charuma.
County of Nariva.
Cadastral Sheet D.25.O. 55A
3/b



1331

For Road Notes See back of Plan
c.f. L & S Bk. 373:94
591:95
1249 Vol. 2:227



SCALE 1/2000.

• Denotes Iron put unless otherwise stated

S. Bhan & B. Partab

Bearings are Cassini Grid based on Solar Obs.

Distances are in METRES

Approved
Director of Surveys
2004/13

Note: To Obtain compass bearings add 06 minutes

PLAN of 3 Parcels of land coloured PINK in the Ward of Charuma.
Containing together one point eight four three two hectares.
Surveyed by me, with due authority, in November 2000.

In accordance with Reg. 25 (1), of the Land Surveyors' Regulations 1998, I certify that this plan is correct.

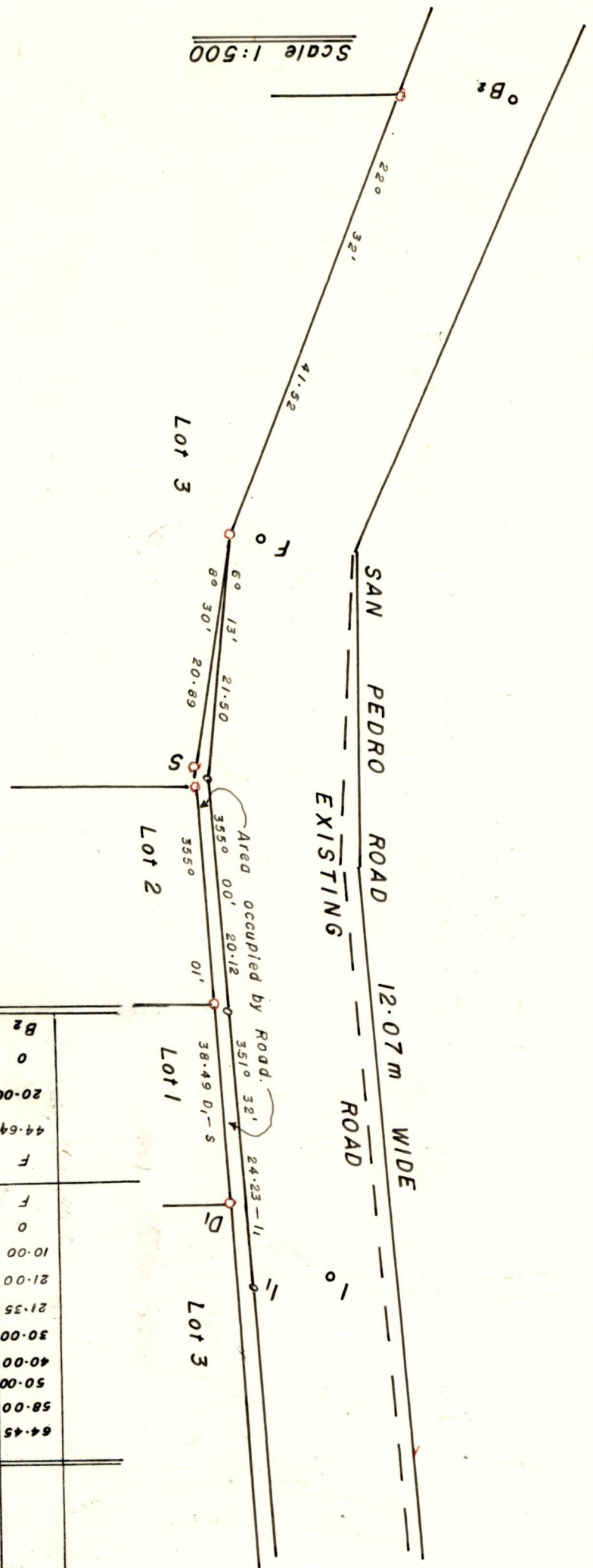
Checked by Mr. M. 04/06/03
Entered 10th January, 2001

Scale 1:500

- | | | | | |
|-------------|---------|----------|----------|-----------------------|
| 1. Vol 4654 | Fol 133 | MEWALAL | INDRA | DHANASAR Singh & Ors. |
| 2. Vol 4654 | Fol 123 | MEWALAL | INDRA | MISSIREE |
| 3. Vol 4654 | Fol 143 | JASSODRA | DHANASAR | VIDYA DHANASAR SINGH |

B ₂	0	20.00	44.64	F	F	0	10.00	21.00	21.35 = 51	30.00	40.00	50.00	58.00	64.45
	7.44	5.65	3.18			3.18	4.70	6.20		7.80	8.35	8.65	9.20 = D ₁	= I
						3530.59'								

EXISTING SAN PEDRO ROAD



54/6821-5