

Process ID 181029  
 R.P.O. Vol. 197 Fol. 65  
 C.T. Vol. 2348 Fol. 311  
 U.P.I.N. No.

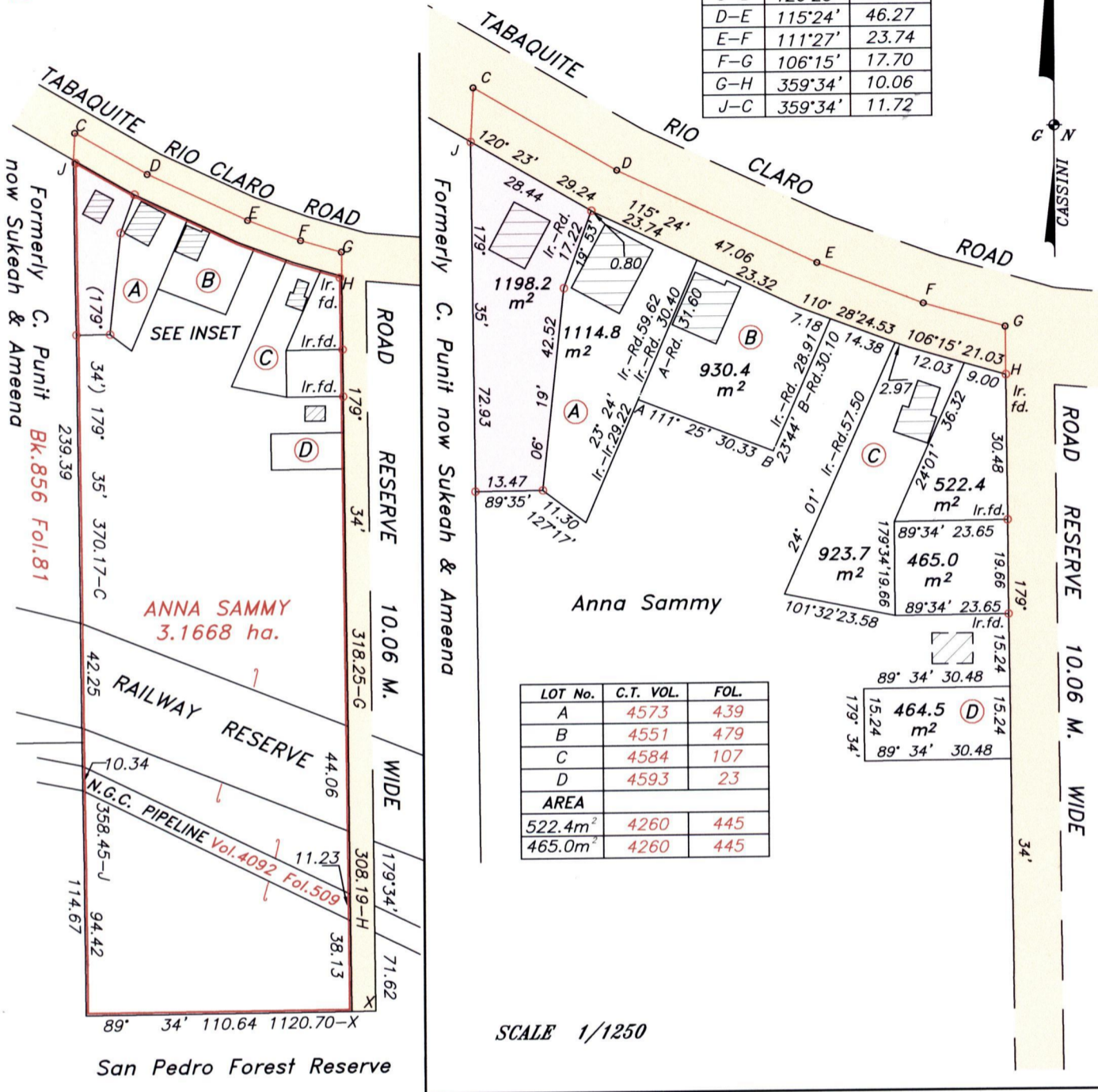
Ward of Charuma  
 County of Nariva  
 Cadastral Sheet (D.25.K.)

55.A  
 1/c

Vol. 5036 Fol. 475

INSET

| LINE | BEARING | LENGTH |
|------|---------|--------|
| C-D  | 120°23' | 34.80  |
| D-E  | 115°24' | 46.27  |
| E-F  | 111°27' | 23.74  |
| F-G  | 106°15' | 17.70  |
| G-H  | 359°34' | 10.06  |
| J-C  | 359°34' | 11.72  |



| LOT No.             | C.T. VOL. | FOL. |
|---------------------|-----------|------|
| A                   | 4573      | 439  |
| B                   | 4551      | 479  |
| C                   | 4584      | 107  |
| D                   | 4593      | 23   |
| AREA                |           |      |
| 522.4m <sup>2</sup> | 4260      | 445  |
| 465.0m <sup>2</sup> | 4260      | 445  |

SCALE 1/1250

ANNA & RALPHIE SAMMY.

See Bk.715 Fol.212  
 Bk.714 Fol.32

Approved   
 Director of Surveys  
 2007.10.19

SCALE 1/2500

○ Denotes Iron put except stated otherwise  
 Bearings are Grid Cassini based on Solar Observations  
 Distances are in metres  
 Plan of a Parcel of land coloured pink in the Ward of Charuma  
 Containing one thousand one hundred and ninety eight point two square metres  
 Surveyed by me, with due authority, in July 2004  
 In accordance with Regulation 25 (1) of the Land Surveyors' Regulations 1998,  
 I certify that this plan is correct.

Checked by.....  
 Helmut 15/10/07

Entered on.....

Trinidad & Tobago Land Surveyor.....2007

