

Process ID# 80998

R.P.O. Vol. 59 Fol. 331

C.T. Vol. 3502 Fol. 515

Vol. 5039 fol. 331

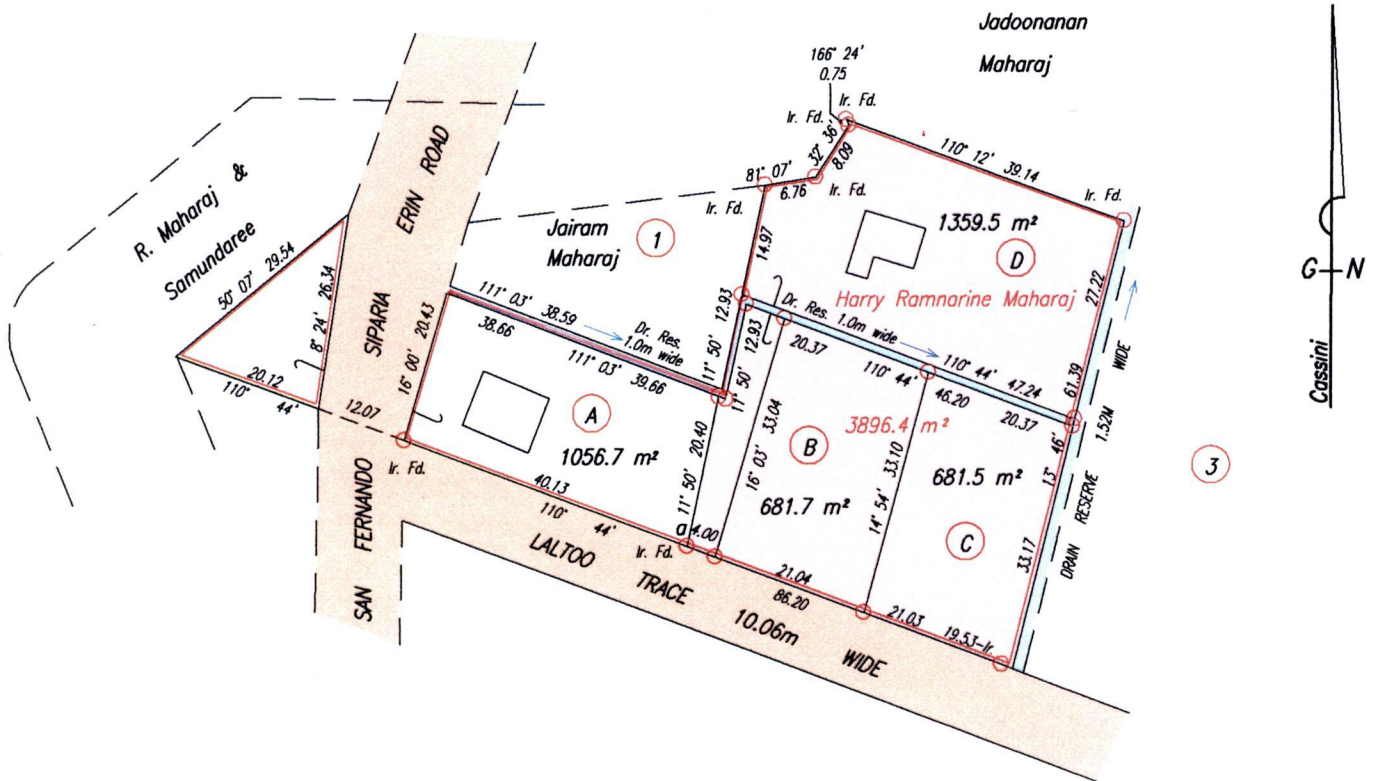
Bk. 1200 fol. 61

Bk. 1249 Vol. 2 fol.9

Ward of Siparia

County of St. Patrick

Cadastral Sheet G.13.F. 63F
1/c



Point	U.T.M. WGS84 Coordinate		Accuracy
	Northing/m	Easting/m	
a	1126037.7	669782.1	± 5.2 m

Coordinates obtained by observation using hand held GPS.

Approved

[Signature]
 Director of Surveys
 2008.4.24

SCALE 1:1000

○ denotes iron put except otherwise stated.

Bearings are Cassini Grid based on solar observations.

Distances are in Metres

Plan of three Parcels of land coloured pink in the Ward of Siparia

Containing together Two Thousand Seven Hundred and Twenty Two point Seven square metres.

Surveyed by me, with due authority, in May 2006.

In accordance with Regulation 25(1) of the Land Surveyors' Regulations 1998,

I certify that this plan is correct.

Checked by *mm 18/4/08*

[Signature]

Entered

Trinidad & Tobago Land Surveyor *16th November 2007*



Original Survey BK. 1200 fol. 61

Lot B → Vol. 5039 fol. 357 RYAN MAHARAJ.

Lot C → Vol. 5039 fol. 353 TRICIA P.K. MAHARAJ BEHARRY.

Lot D → Vol. 5039 fol. 363 SHERINA MAHARAJ.

