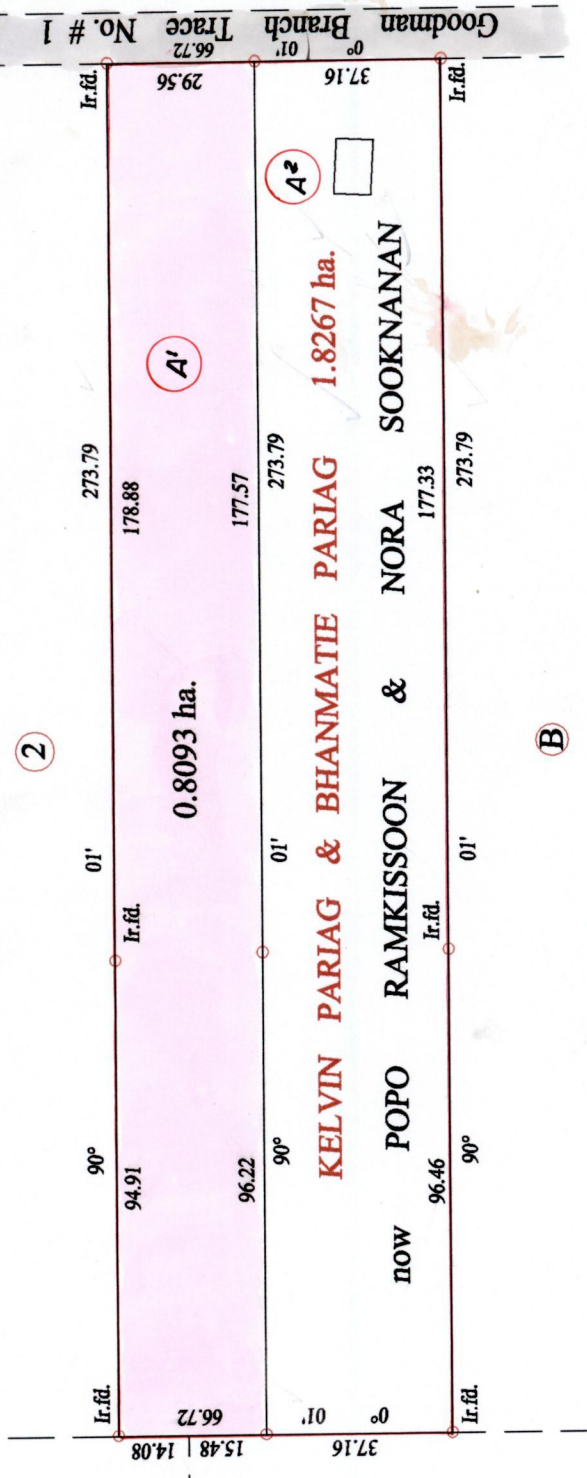


R.P.O. Vol. 191 Fol. 427
 C.T. Vol. 3409 Fol. 141
 Vol. 4903 Fol. 493

Ward of Siparia
 County of St. Patrick
 Cadastral Sheet (G.18.C & D) 73.C. 2/a

Process Leaf # 20975



SHERRY-ANN RAMKISSOON



SCALE : 1:1500

Vide Bk. 408 fol. 98

Approved
 Director of Surveys

○ Denotes Iron put except stated otherwise.

Note: Bearings are cassini grid based on solar observations Distances are in metres

PLAN of a Parcel of land coloured pink in the Ward of Siparia

Containing zero point eight zero nine three hectare

Surveyed by me, with due authority, in June 2005

In accordance with Regulation 25 (1) of the Land Surveyors' Regulations 1998,

I certify that this plan is correct.

Checked by
 16/7/08

Entered on Trinidad & Tobago Land Surveyor 27.07.2006

