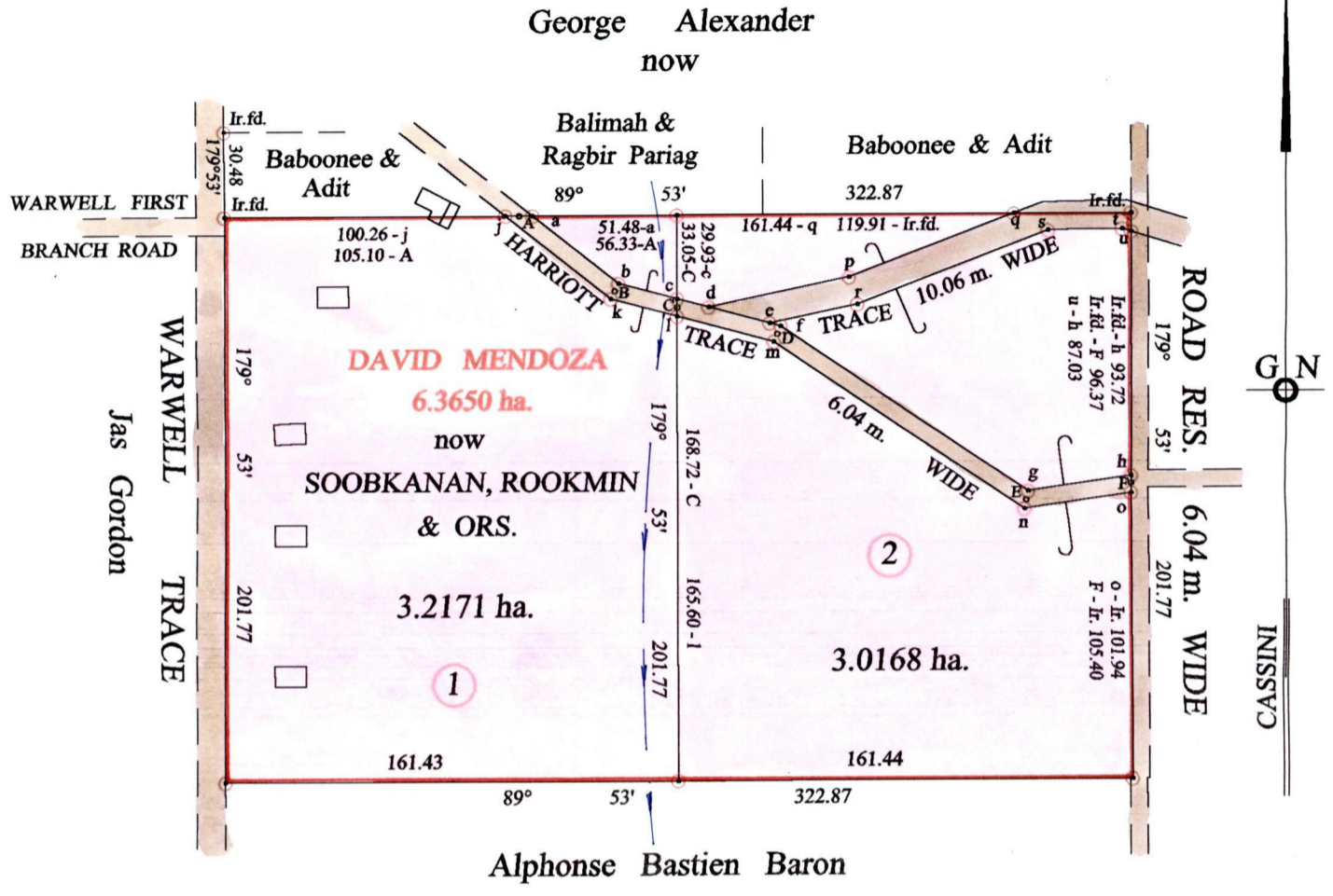


Process 502 80907  
 R.P.O. Vol. 91 Fol. 183  
 C.T. Vol. 530 Fol. 447  
 Vol. 4934 Fol. 417

1331

62

Ward of Ortoire  
 County of Victoria  
 Cadastral Sheet (H.1.N) 55.D. & 54.F.  
 3/c 4/d



S.O.No.1127 / 04		
A - B	128° 27'	43.56
B - C	104° 43'	23.03
C - D	104° 43'	36.97
D - E	123° 53'	106.72
E - F	81° 00'	37.69

a - b	128° 27'	39.13	l - m	104° 43'	35.66
b - c	104° 43'	21.60	m - n	123° 53'	107.40
c - d	104° 43'	11.65	n - o	81° 35'	38.34
d - e	104° 43'	22.52	d - p	78° 11'	51.18
e - f	104° 43'	4.10	p - q	68° 50'	62.72
f - g	123° 53'	106.08	e - r	78° 11'	31.85
g - h	81° 35'	36.89	r - s	68° 50'	72.59
j - k	128° 27'	47.98	s - t	88° 58'	26.37
k - l	104° 43'	24.47	t - u	107° 23'	3.26

Vide Plan A.E.57

Approved *[Signature]*  
 Director of Surveys  
 25 Oct 2003

○ Denotes Iron put except stated otherwise. SCALE : 1:2500

Note: Bearings are cassini grid based on solar observations Distances are in metres

PLAN of 2 Parcels of land coloured pink in the Ward of Ortoire  
 Containing together six point two three three nine hectares  
 Surveyed by me, with due authority, in April 2001

In accordance with Regulation 25 (1) of the Land Surveyors' Regulations 1998,  
 I certify that this plan is correct.

Checked by *[Signature]* 7 July 03

Entered on ..... Trinidad & Tobago Land Surveyor ..... 2002



1. Vol 4951 Fol 205 Sookbir Sookkaran

2. Vol 4951 Fol 207 Sookbir Sookkaran

12 NOV 2002  
Lands and  
Surveys  
Division

1289/41