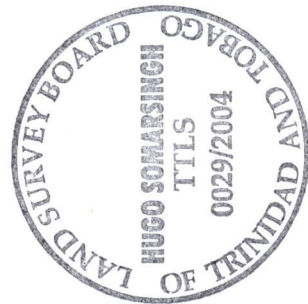
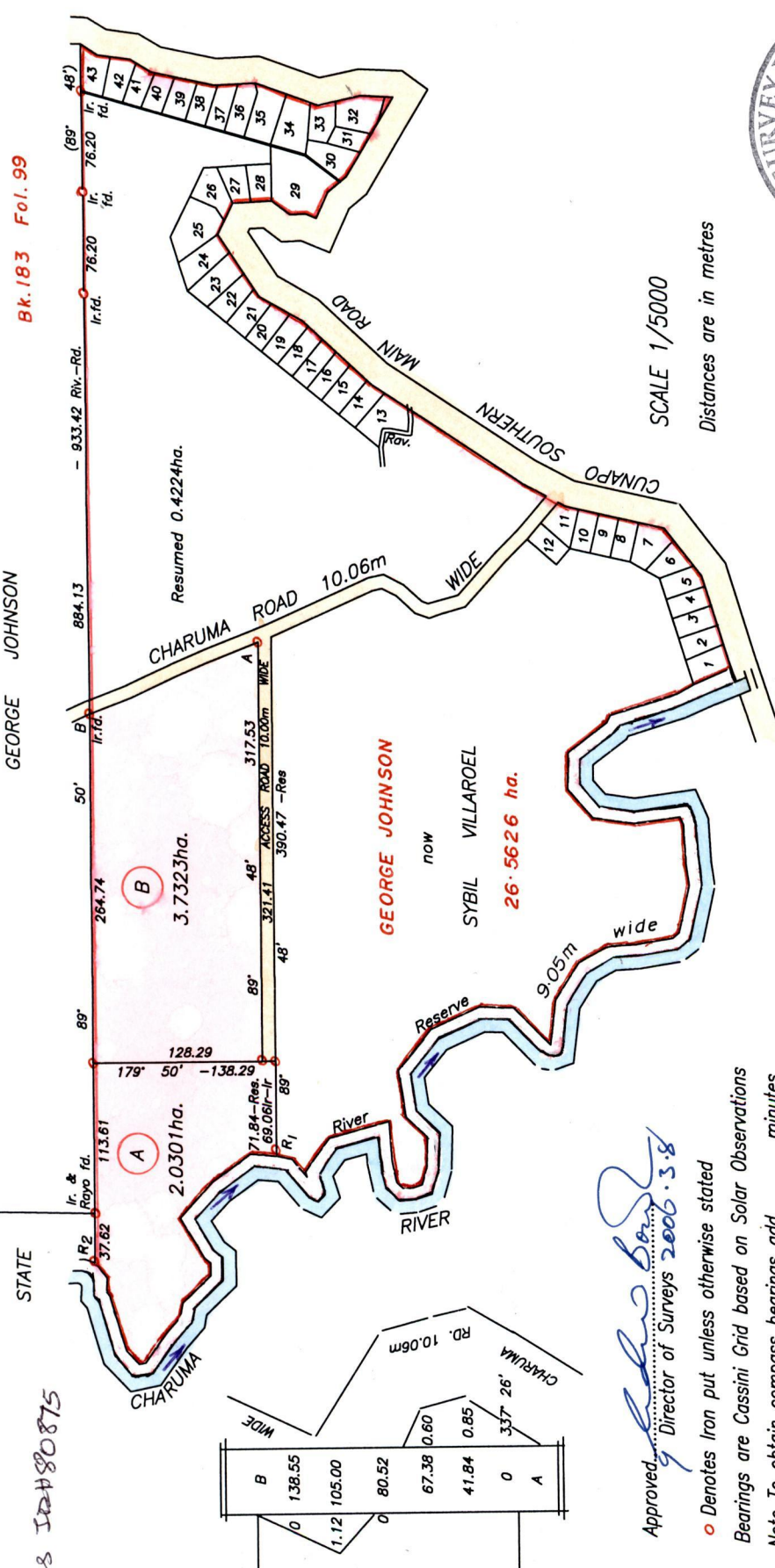
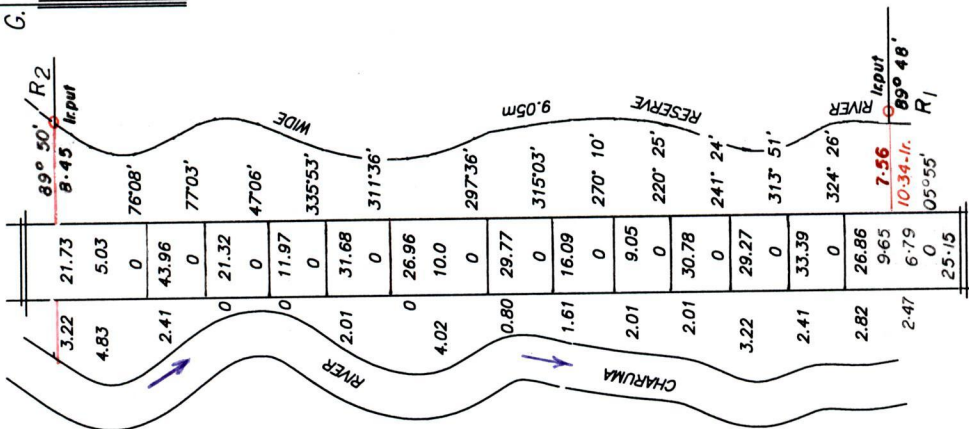
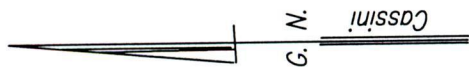


Cadastral Sheet (E.16.H) 45 B & 45 E
4/d & 2/b
Ward of Charuma
County of Nariva
S.O.No. 1450 / 1904



U.P.R.N. NO.
R.P.O. Vol. 143 Fol. 25
C.T. Vol. Fol.

VOL. 4890 Fol. 97
Process ID#80875

Approved, *[Signature]*
Director of Surveys 2006.3.8

o Denotes Iron put unless otherwise stated
Bearings are Cassini Grid based on Solar Observations
Note To obtain compass bearings add minutes

Plan of 2 Parcels of land coloured pink in the Ward of Charuma
Containing together five point seven six two four hectares
Surveyed by me, with due authority in November 2002

In accordance with Regulation 25 (1) of the Land Surveyors' Regulations 1998, I certify that this plan is correct.
Checked by: *[Signature]*

Entered on: C.M.S. 06-03-2015
[Signature]
Trinidad and Tobago Land Surveyor... 16th June 2004

Original Book 183 Folio 99

A. Vol. 4890 Fol. 103 KISHORE RAMNARINE

B. Vol. 4890 Fol. 113 KISHORE RAMNARINE

11 JUN 2004
Lands and
Surveys

1358/212