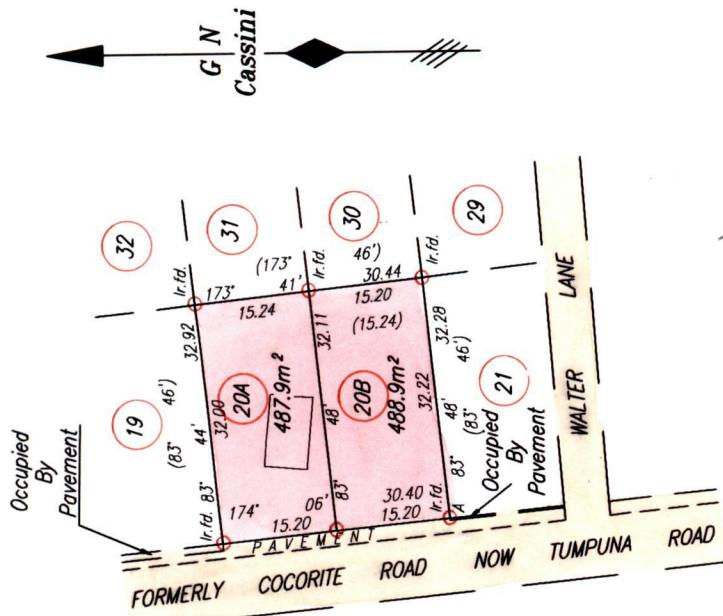


Cadastral Sheet B.25.A 24C
Borough of Arima
County of St. George

See Vide Plan X.D. 77
Bk. 504 Fol. 3
Plan P.G. 1

Vol 4648 Fol 171
R.P.O. Vol. 11 Fol. 389
C.T. Vol. 1149 Fol. 141

Process INH 80973



INSET

SCALE 1:1000

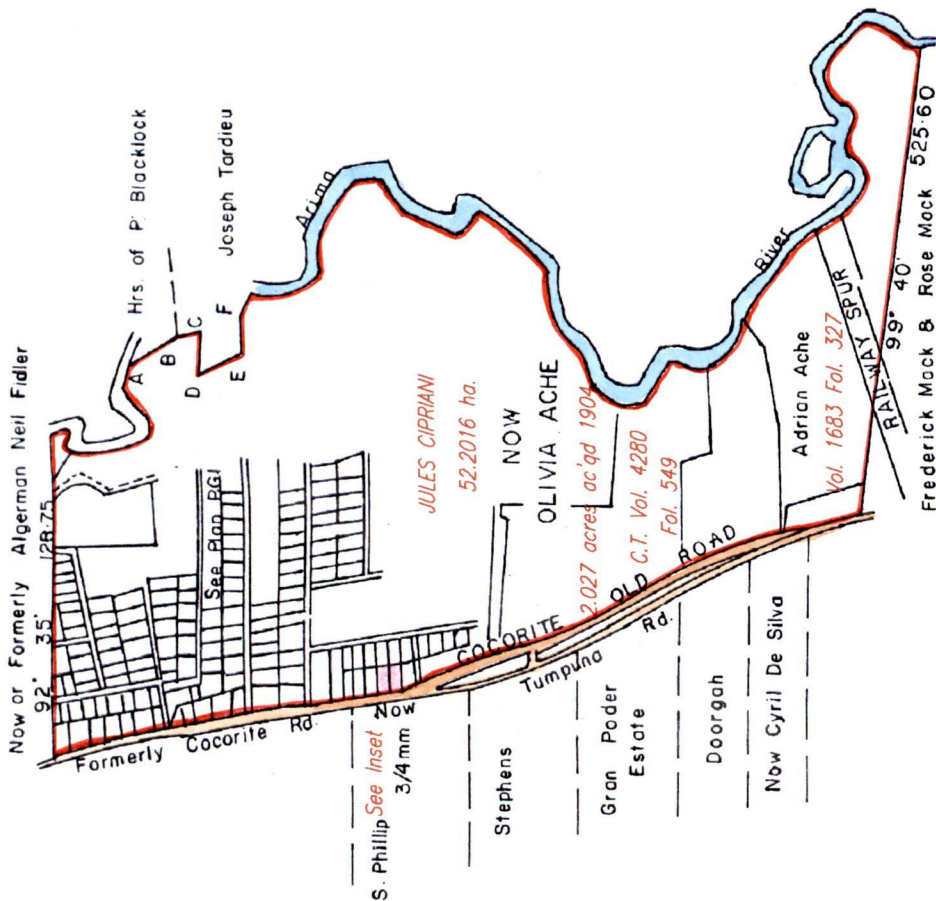
Distances are in METRES

LEGEND

A - B	155° 54'	64.78
B - C	169° 10'	35.00
C - D	273° 30'	53.31
D - E	159° 20'	44.06
E - F	99° 23'	70.47

Approved *[Signature]*
Director of Surveys 2003.3.20

SCALE 1" = 12 Chains
Distances are in METRES



○ Denotes Iron put except where otherwise stated

Bearings are Cassini Grid based on Solar Observations

PLAN of 2 Parcels of land coloured pink in the Borough of Arima

Containing together nine hundred and seventy six point eight square metres

Surveyed by me, with due authority, in June 2001

In accordance with Regulation 25 (1) of The Land Surveyors' Regulations 1998,

I certify that this plan is correct.

Checked by *[Signature]* T.T.L.S.

Entered on *[Signature]* Trinidad & Tobago Land Surveyor 30th December 2002

19.1.2015

03 FEB 2003
Leads and
Surveys
Division

20A -

20B - Vol. 4661 fol. 169 Ian Gerard Murrell